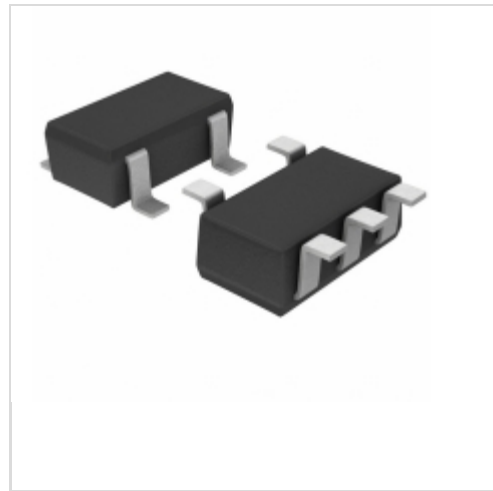


BD46342G-TR



LAPIS Semiconductor
IC RESET CMOS 3.4V 200MS 5SSOP
Lead free / RoHS Compliant
Integrated Circuits (ICs)

[BD46342G-TR.pdf](#)

Buy Now

Out Stock
0 pcs
Minimum:1
Multiples:100
Manufacturer lead time 10 weeks

We can supply LAPIS Semiconductor BD46342G-TR, use the request quote form to request BD46342G-TR price, LAPIS Semiconductor Datasheet PDF and lead time. Zeanoit.com is a professional electronic components distributor. With 3+ Million line items of available electronic components can ship in short lead-time, over 250 thousand part numbers of electronic components in stock for immediately delivery, which may include part number BD46342G-TR. The price and lead time for BD46342G-TR depending on the quantity required, availability and warehouse location.

Shopping Process

1

Confirm the product

2

submit the order

3

payment

4

wait for delivery

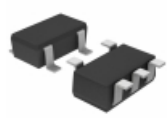
5

receive the goods

Specifications

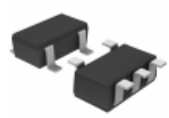
Voltage - Threshold:	3.4V
Type:	Simple Reset/Power-On Reset
Supplier Device Package:	5-SSOP
Series:	BD46xxx
Reset Timeout:	180 ms Minimum
Reset:	Active Low
Packaging:	Tape & Reel (TR)
Package / Case:	SC-74A, SOT-753
Output:	Push-Pull, Totem Pole
Operating Temperature:	-40°C ~ 105°C (TA)
Number of Voltages Monitored:	1
Mounting Type:	Surface Mount

Related products



BD46352G-TR
IC RESET CMOS 3.5V 200MS 5SSOP
[Rohm Semiconductor](#)

RFQ



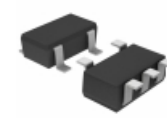
BD46345G-TR
IC RESET CMOS 3.4V 50MS 5SSOP
[Rohm Semiconductor](#)

RFQ



BD46332G
[ROHM](#)

RFQ



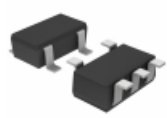
BD46341G-TR
IC RESET CMOS 3.4V 100MS 5SSOP
[Rohm Semiconductor](#)

RFQ



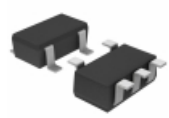
BD46351G
[ROHM](#)

RFQ



BD46351G-TR
IC RESET CMOS 3.5V 100MS 5SSOP
[Rohm Semiconductor](#)

RFQ



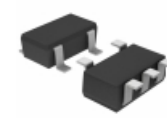
BD46331G-TR
IC RESET CMOS 3.3V 100MS 5SSOP
[Rohm Semiconductor](#)

RFQ



BD46332G-TR
IC RESET CMOS 3.3V 200MS 5SSOP
[Rohm Semiconductor](#)

RFQ



BD46335G-TR
IC RESET CMOS 3.3V 50MS 5SSOP
[Rohm Semiconductor](#)

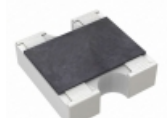
RFQ



BD46345G
[ROHM](#)

RFQ

Guess You May Looking For



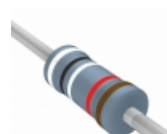
YC162-FR-0786R6L
RES ARRAY 2 RES 86.6 OHM 0606
[Yageo](#)

RFQ



AP101 1K J
RES 1K OHM 100W 5% TO-247
[Ohmite](#)

RFQ



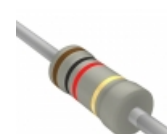
MFR-25FRF52-90K9
RES 90.9K OHM 1/4W 1% AXIAL
[Yageo](#)

RFQ



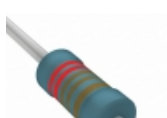
CMF5018K700FHEB
RES 18.7K OHM 1/4W 1% AXIAL
[Vishay Dale](#)

RFQ



CFR16J2R2
RES 2.20 OHM 1/4W 5% AXIAL
[TE Connectivity Passive Product](#)

RFQ



MRS25000C2211FCT00
RES 2.21K OHM 0.6W 1% AXIAL
[Vishay BC Components](#)

RFQ



CMF071K0000JLEA
RES 1K OHM 1/2W 5% AXIAL
[Vishay Dale](#)

RFQ



CMF5552K300FKEA
RES 52.3K OHM 1/2W 1% AXIAL
[Vishay Dale](#)

RFQ



RN60D12R4FRE6
RES 12.4 OHM 1/4W 1% AXIAL
[Vishay Dale](#)

RFQ



RN60C1002FRE6
RES 10K OHM 1/4W 1% AXIAL
[Vishay Dale](#)

RFQ