

ABP2820EMM-G1



Diodes Incorporated
IC DISTRIBUTION SWITCH 8MSOP
Lead free / RoHS Compliant
Integrated Circuits (ICs)

Buy Now

We can supply ABP2820EMM-G1, use the request quote form to request ABP2820EMM-G1 price and lead time. Zeano is a professional electronic components distributor. With 3+ Million line items of available electronic components can ship in short lead-time, over 250 thousand part numbers of electronic components in stock for immediately delivery, which may include part number ABP2820EMM-G1. The price and lead time for ABP2820EMM-G1 depending on the quantity required and warehouse location. Contact us and our sales representative will provide you price. We look forward to work with you.

Shopping Process

1

Confirm the product

2

submit the order

3

payment

4

wait for delivery

5

receive the goods

Specifications

Supplier Device Package:	-
Series:	*
Packaging:	-
Package / Case:	-

Related products



ABP2820CMM-G1
IC DISTRIBUTION SWITCH 8MSOP
[Diodes Incorporated](#)

RFQ



ABP2820AMM-G1
IC DISTRIBUTION SWITCH 8MSOP
[Diodes Incorporated](#)

RFQ



ABP8000200SET
BOX ALUM BLACK 7.87"L X 3.23"W
[Bopla Enclosures](#)

RFQ



ABP2820EMMTR-G1
IC USB SWITCH 8MSOP
[Diodes Incorporated](#)

RFQ



ABP6000100SET
BOX ALUM BLACK 3.94"L X 2.24"W
[Bopla Enclosures](#)

RFQ



ABP2820AMMTR-G1
IC USB SWITCH 8MSOP
[Diodes Incorporated](#)

RFQ



ABP2820CMMTR-G1
IC USB SWITCH 8MSOP
[Diodes Incorporated](#)

RFQ



ABP2815CMMTR-G1
IC USB SWITCH 8MSOP
[Diodes Incorporated](#)

RFQ



ABP2820GMMTR-G1
IC USB SWITCH 8MSOP
[Diodes Incorporated](#)

RFQ



ABP2820GMM-G1
IC DISTRIBUTION SWITCH 8MSOP
[Diodes Incorporated](#)

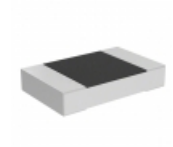
RFQ

Guess You May Looking For



M55342K12B1B14RT3
RES SMD 1.14KOHM 0.1% 1/10W 0603
[Vishay Dale](#)

RFQ



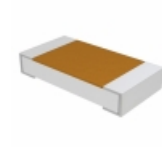
PLTT0805Z8450AGT5
RES SMD 845 OHM 0.05% 1/4W 0805
[Vishay Thin Film](#)

RFQ



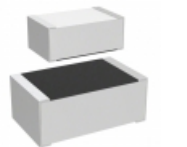
RCP2512B680RGWB
RES SMD 680 OHM 2% 22W 2512
[Vishay Dale](#)

RFQ



D55342E07B280DRWS
RES SMD 280 OHM 1% 1/4W 1206
[Vishay Dale](#)

RFQ



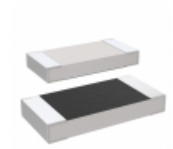
M55342E06B1E00PWS
RES SMD 1K OHM 1% 0.15W 0705
[Vishay Dale](#)

RFQ



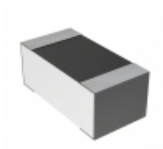
M55342H06B392ERWS
RES SMD 392K OHM 1% 0.15W 0705
[Vishay Dale](#)

RFQ



M55342H03B2B67RWS
RES SMD 2.67K OHM 0.1% 1/5W 1005
[Vishay Dale](#)

RFQ



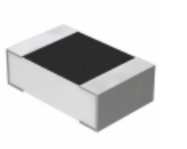
Y1636750R000Q9W
RES SMD 750 OHM 0.02% 1/10W 0603
[Vishay Foil Resistors \(Division of Vishay Precisio\)](#)

RFQ



Y11211K00000B9R
RES SMD 1K OHM 0.1% 1/4W J LEAD
[Vishay Foil Resistors \(Division of Vishay Precisio\)](#)

RFQ



Y40221K00000D0W
RES SMD 1K OHM 0.5% 1/5W 0805
[Vishay Foil Resistors \(Division of Vishay Precisio\)](#)

RFQ