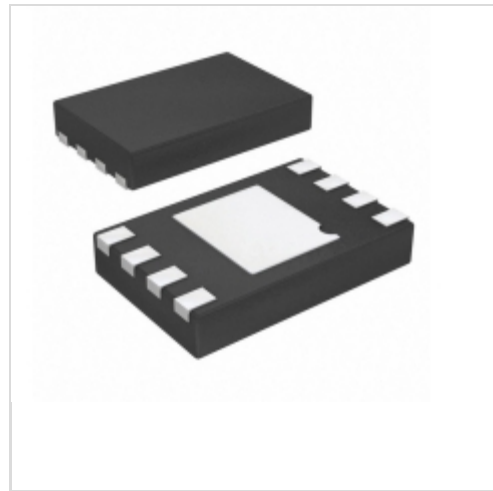


BR24L01ANUX-WTR

LAPIS Semiconductor

IC EEPROM 1KBIT 400KHZ 8VSON
Lead free / RoHS Compliant
Integrated Circuits (ICs)

[BR24L01ANUX-WTR.pdf](#)

Buy Now

Out Stock

0 pcs

Minimum:1

Multiples:100

Manufacturer lead time 10 weeks

Images are for reference only.

See Product Specifications for product details.

If you are interested to buy BR24L01ANUX-WTR, Just Email us.

Sales@zeanoit.com

our sales team will reply you within 24 hours

Shopping Process

1

Confirm the product

2

submit the order

3

payment

4

wait for delivery

5

receive the goods

Specifications

Voltage - Supply:	1.8 V ~ 5.5 V
Supplier Device Package:	VSON008X2030
Speed:	400kHz
Series:	-
Packaging:	Tape & Reel (TR)
Package / Case:	8-UFDFN Exposed Pad
Operating Temperature:	-40°C ~ 85°C (TA)
Memory Type:	Non-Volatile
Memory Size:	1Kb (128 x 8)
Memory Format:	EEPROM
Interface:	I ² C, 2-Wire Serial

Related products

BR24L01AFV-WE2

IC EEPROM 1KBIT 400KHZ 8SSOPB
[Rohm Semiconductor](#)

RFQ


BR24L02F-E2

[ROHM](#)

RFQ


BR24L01AFVJ-WE2

IC EEPROM 1KBIT 400KHZ 8TSSOP-BJ
[Rohm Semiconductor](#)

RFQ


BR24L02-W

IC EEPROM 2KBIT 400KHZ 8DIP
[Rohm Semiconductor](#)

RFQ


BR24L01AFVT-WE2

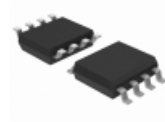
IC EEPROM 1KBIT 400KHZ 8TSSOP-B
[Rohm Semiconductor](#)

RFQ


BR24L01AFVM-WTR

IC EEPROM 1KBIT 400KHZ 8MSOP
[Rohm Semiconductor](#)

RFQ


BR24L01AFJ-WE2

IC EEPROM 1KBIT 400KHZ 8SOP-J
[Rohm Semiconductor](#)

RFQ


BR24L02F

[ROHM](#)

RFQ


BR24L02F-WE2

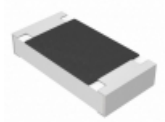
IC EEPROM 2KBIT 400KHZ 8SOP
[Rohm Semiconductor](#)

RFQ


BR24L02F-WF2

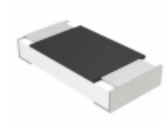
[ROHM](#)

RFQ

Guess You May Looking For

ERJ-8RQFR68V

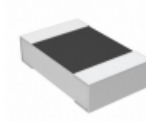
RES SMD 0.68 OHM 1% 1/4W 1206
[Panasonic Electronic Components](#)

RFQ


MCA1206MD1000BP100

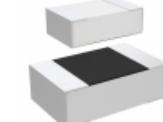
RES SMD 100 OHM 0.1% 0.4W 1206
[Vishay Beyschlag](#)

RFQ


RN73C2A9K09BTDF

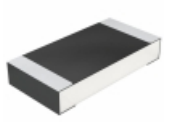
RES SMD 9.09KOHM 0.1% 1/10W 0805
[TE Connectivity Passive Product](#)

RFQ


CRGH0805J3R3

RES SMD 3.3 OHM 5% 1/3W 0805
[TE Connectivity Passive Product](#)

RFQ


CRCW120621K0FKEB

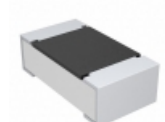
RES SMD 21K OHM 1% 1/4W 1206
[Vishay Dale](#)

RFQ


RMCS0402FT1K21

RES SMD 1.21K OHM 1% 1/16W 0402
[Stackpole Electronics Inc.](#)

RFQ


CRCW06039K53FKTB

RES SMD 9.53K OHM 1% 1/10W 0603
[Vishay Dale](#)

RFQ


RNCF0402DTE82R5

RES SMD 82.5 OHM 0.5% 1/16W 0402
[Stackpole Electronics Inc.](#)

RFQ


RT0402CRE07162RL

RES SMD 162 OHM 0.25% 1/16W 0402
[Yageo](#)

RFQ


RNCF0201DTE2K43

RES SMD 2.43KOHM 0.5% 1/32W 0201
[Stackpole Electronics Inc.](#)

RFQ