

**CA15-9-ADP**



**Multi-Tech Systems, Inc.**

ADAPTER DE15-DE9 GLOBAL

Lead free / RoHS Compliant

RF/IF and RFID

[CA15-9-ADP.pdf](#)

**Buy Now**

**In Stock**  
**1 pcs**  
Minimum:1  
Multiples:100  
Manufacturer lead time 10 weeks

part#CA15-9-ADP is available, see description of CA15-9-ADP as below .  
use the request quote form to request CA15-9-ADP price and lead time.  
Buy Electronic Components at zeanoit.com .we are an independent distributor of electronic components with extensive inventory in stock.  
The price and lead time for CA15-9-ADP depending on the quantity required, availability and warehouse location.Contact us today and our sales team will send you quotation soon.  
Email: sales@zeanoit.com

Shopping Process

**1**

**Confirm the product**

**2**

**submit the order**

**3**

**payment**

**4**

**wait for delivery**

**5**

**receive the goods**

Specifications

|                                       |         |
|---------------------------------------|---------|
| <b>Series:</b>                        | -       |
| <b>For Use With/Related Products:</b> | -       |
| <b>Accessory Type:</b>                | Adapter |

Related products



**CA15150\_STRADA-ME**  
LENS ASSY 1POS RECT 15.52X19.6MM  
[Ledil](#)

RFQ



**CA14745\_STRADA-SQ-ANZ-V**  
LENS ASSEMBLY SQUARE 1POS 25MM  
[Ledil](#)

RFQ



**CA15-9-DV**  
CABLE SERIAL DE15-Y VOICE/DATA  
[Multi-Tech Systems Inc.](#)

RFQ



**CA14843\_STRADA-B2**  
LENS RECTANG 0 POS 19.6 + 15.5MM  
[Ledil](#)

RFQ



**CA14941\_MINNIE-LT-M-PIN**  
REFLECTOR ROUND 1 POS 35MM (D) 1  
[Ledil](#)

RFQ



**CA1500H00129**  
AC/DC CONVERTER 2X24V 240W  
[TDK-Lambda Americas Inc.](#)

RFQ



**CA15032\_STRADA-2X2-T4-B**  
LENS SQUARE 4 POS 50X50MM (D) 9.  
[Ledil](#)

RFQ



**CA14949\_STRADA-SQ-T3B**  
LENS ASSEMBLY SQUARE 1POS 25MM  
[Ledil](#)

RFQ



**CA14942\_MINNIE-LT-W-PIN**  
REFLECTOR ROUND 1 POS 35MM (D) 1  
[Ledil](#)

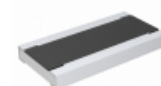
RFQ



**CA15-9-D**  
CABLE SERIAL DE15-DE9 DATA ONLY  
[Multi-Tech Systems Inc.](#)

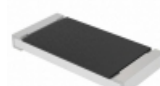
RFQ

Guess You May Looking For



**RCWE0612R110JNEA**  
RES SMD 0.11 OHM 5% 1W 0612  
[Vishay Dale](#)

RFQ



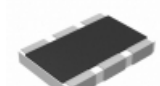
**CRCW251215K0JNEGHP**  
RES SMD 15K OHM 5% 1.5W 2512  
[Vishay Dale](#)

RFQ



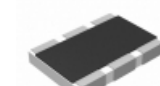
**RNCF1210BTC5R62**  
RES SMD 5.62 OHM 0.1% 1/3W 1210  
[Stackpole Electronics Inc.](#)

RFQ



**RC1218DK-0751KL**  
RES SMD 51K OHM 1W 1812 WIDE  
[Yageo](#)

RFQ



**RC1218DK-0780R6L**  
RES SMD 80.6 OHM 1W 1812 WIDE  
[Yageo](#)

RFQ



**ERA-2HRC4321X**  
RES SMD 4.32K OHM 1/16W 0402  
[Panasonic Electronic Components](#)

RFQ



**ERA-2HRC1301X**  
RES SMD 1.3KOHM 0.25% 1/16W 0402  
[Panasonic Electronic Components](#)

RFQ



**CRCW1218560KFKEK**  
RES SMD 560K OHM 1% 1W 1218  
[Vishay Dale](#)

RFQ



**RCL1218130RFKEK**  
RES SMD 130 OHM 1W 1812 WIDE  
[Vishay Dale](#)

RFQ



**RNCF2010BKE68K1**  
RES SMD 68.1K OHM 0.1% 1/3W 2010  
[Stackpole Electronics Inc.](#)

RFQ