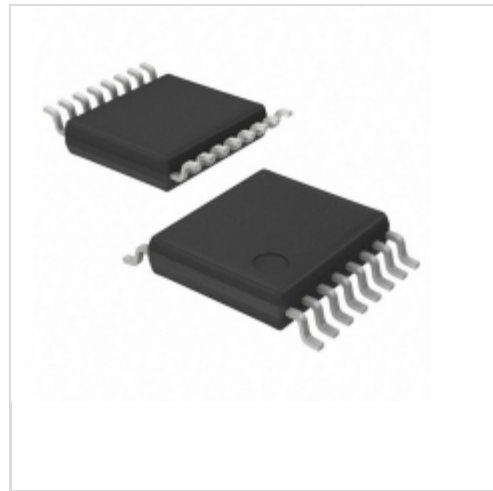


LV8862JA-AH



[AMI Semiconductor / ON Semiconductor](#)

IC FAN MOTOR DVR 1PHASE 16SSOP

Lead free / RoHS Compliant

Integrated Circuits (ICs)

[LV8862JA-AH.pdf](#)

[Buy Now](#)

We can supply AMI Semiconductor / ON Semiconductor LV8862JA-AH, use the request quote form to request LV8862JA-AH price, AMI Semiconductor / ON Semiconductor Datasheet PDF and lead time. Zeanoit.com is a professional electronic components distributor. With 3+ Million line items of available electronic components can ship in short lead-time, over 250 thousand part numbers of electronic components in stock for immediately delivery, which may include part number LV8862JA-AH. The price and lead time for LV8862JA-AH depending on the quantity required, availability and warehouse location.

Out Stock

0 pcs

Minimum:1

Multiples:100

Manufacturer lead time 10 weeks

Shopping Process

1

Confirm the product

2

submit the order

3

payment

4

wait for delivery

5

receive the goods

Specifications

Voltage - Supply:	3.6 V ~ 16 V
Voltage - Load:	3.6 V ~ 16 V
Technology:	Bi-CMOS
Supplier Device Package:	16-SSOP
Step Resolution:	-
Series:	-
Packaging:	Tape & Reel (TR)
Package / Case:	16-LSSOP (0.173", 4.40mm Width)
Output Configuration:	Half Bridge (2)
Operating Temperature:	-40°C ~ 95°C (TA)
Mounting Type:	Surface Mount
Motor Type - Stepper:	-
Motor Type - AC, DC:	Brushed DC
Interface:	Parallel, PWM
Function:	Driver - Fully Integrated, Control and Power Stage
Current - Output:	1.5A
Applications:	Fan Motor Driver

Related products



LV8860PV-MPB-H

IC MOTOR DRIVER SGL PHASE 16SSOP

[ON Semiconductor](#)

RFQ



LV8907UWR2G

IC BLDC MOTOR CNTRL SPI

[ON Semiconductor](#)

RFQ



LV8860V-MPB-H

IC MOTOR DRIVER PAR 16SSOP

[ON Semiconductor](#)

RFQ

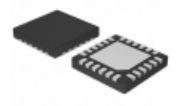


LV8850GA-AH

IC MOTOR CTRL PAR/PWM TSSOP36

[ON Semiconductor](#)

RFQ



LV8829LFQA-NH

IC MOTOR DRIVER PAR/PWM 24VQFN

[ON Semiconductor](#)

RFQ



LV8860VGEVB

BOARD EVAL FOR LB8860V

[ON Semiconductor](#)

RFQ



LV8860V-TLM-H

IC MOTOR DRIVER PAR 16SSOP

[ON Semiconductor](#)

RFQ



LV8860PV-TLM-H

IC MOTOR DRIVER SGL PHASE 16SSOP

[ON Semiconductor](#)

RFQ



LV8829LFQAGEVK

KIT EVAL FOR LV8829LFQA

[ON Semiconductor](#)

RFQ



LV8850GA-ZH

IC MOTOR CTRL PAR/PWM TSSOP36

[ON Semiconductor](#)

RFQ

Guess You May Looking For

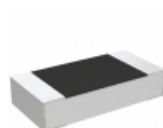


PWR2615WR290JE

RES SMD 0.29 OHM 5% 1W 2615

[Bourns Inc.](#)

RFQ

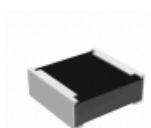


RP73D2B732KBTG

RES SMD 732K OHM 0.1% 1/4W 1206

[TE Connectivity Passive Product](#)

RFQ



RCP0505B10R0JTP

RES SMD 10 OHM 5% 5W 0505

[Vishay Dale](#)

RFQ



PWR2615W2701J

RES SMD 2.7K OHM 5% 1W 2615

[Bourns Inc.](#)

RFQ



RG1608V-1431-W-T5

RES SMD 1.43K OHM 1/10W 0603

[Susumu](#)

RFQ

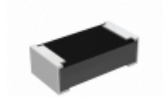


RG2012V-512-W-T5

RES SMD 5.1K OHM 0.05% 1/8W 0805

[Susumu](#)

RFQ



RCP0603B200RGE

RES SMD 200 OHM 2% 3.9W 0603

[Vishay Dale](#)

RFQ



RG2012V-7680-W-T1

RES SMD 768 OHM 0.05% 1/8W 0805

[Susumu](#)

RFQ



RG2012V-681-W-T1

RES SMD 680 OHM 0.05% 1/8W 0805

[Susumu](#)

RFQ



WSR5R0900FEA

RES SMD 0.09 OHM 1% 5W 4527

[Vishay Dale](#)

RFQ

