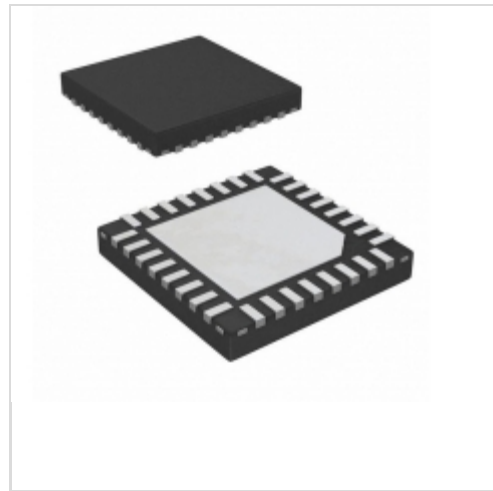


LP3921SQE/NOPB



N/A
IC PMU BATTERY CHRGR/REG 32-LLP
Lead free / RoHS Compliant
Integrated Circuits (ICs)

Buy Now

Out Stock

0 pcs

Minimum:1

Multiples:1

Manufacturer lead time 10 weeks

Images are for reference only.

See Product Specifications for product details.

If you are interested to buy LP3921SQE/NOPB, Just Email us.

Sales@zeanoit.com

our sales team will reply you within 24 hours

Shopping Process

1

Confirm the product

2

submit the order

3

payment

4

wait for delivery

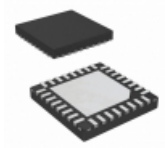
5

receive the goods

Specifications

Voltage - Supply (Max):	5.5V
Supplier Device Package:	32-WQFN (5x5)
Series:	Boomer®
Programmable Features:	-
Packaging:	Tape & Reel (TR)
Package / Case:	32-WFQFN Exposed Pad
Operating Temperature:	-40°C ~ 85°C (TA)
Number of Cells:	1
Interface:	I ² C
Fault Protection:	Over Temperature, Reverse Current
Current - Charging:	Constant - Programmable
Charge Current - Max:	950mA
Battery Pack Voltage:	4.2V
Battery Chemistry:	Lithium-Ion

Related products



LP3921SQ/NOPB
IC CHARGER MULTI-REGULATOR
32QFN
N/A

[RFQ](#)



LP3919RLX-D/NOPB
IC PMU CDMA W/CHARGER 49USMDXT
N/A

[RFQ](#)



LP391M200C5P3
CAP ALUM 390UF 20% 200V SNAP
Cornell Dubilier Electronics (CDE)

[RFQ](#)



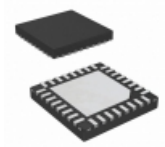
LP3922RL-B/NOPB
IC CDMA PMU CHRGR USB ADAPTER
N/A

[RFQ](#)



LP3922RLX
NS

[RFQ](#)



LP3921SQX/NOPB
IC BATT CHRGR MGMT/REG 32WQFN
N/A

[RFQ](#)



LP3922RLX-B
NS

[RFQ](#)



LP3919RLX-C/NOPB
IC PMU CDMA W/CHARGER 49USMDXT
N/A

[RFQ](#)



LP3922RLX-B/NOPB
IC CDMA PMU CHRGR USB ADAPTER
N/A

[RFQ](#)



LP391M250H3P3
CAP ALUM 390UF 20% 250V SNAP
Cornell Dubilier Electronics (CDE)

[RFQ](#)

Guess You May Looking For



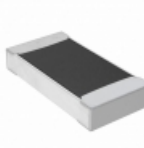
AT0603CRD073K32L
RES SMD 3.32K OHM 1/10W 0603
Yageo

[RFQ](#)



CSRN2010JKR400
RES SMD 0.4 OHM 5% 1W 2010
Stackpole Electronics Inc.

[RFQ](#)



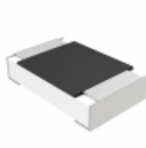
RNCF1206BKC2K67
RES SMD 2.67K OHM 0.1% 1/4W 1206
Stackpole Electronics Inc.

[RFQ](#)



RT0603CRC0734K8L
RES SMD 34.8K OHM 1/10W 0603
Yageo

[RFQ](#)



MCU08050D3601BP500
RES SMD 3.6K OHM 0.1% 1/8W 0805
Vishay Beyschlag

[RFQ](#)



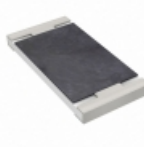
RT0805CRD07169KL
RES SMD 169K OHM 0.25% 1/8W 0805
Yageo

[RFQ](#)



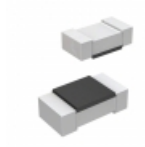
RT2512FKE07267RL
RES SMD 267 OHM 1% 3/4W 2512
Yageo

[RFQ](#)



RT2512FKE0773K2L
RES SMD 73.2K OHM 1% 3/4W 2512
Yageo

[RFQ](#)



CRT0603-BY-3832ELF
RES SMD 38.3KOHM 0.1% 1/10W 0603
Bourns Inc.

[RFQ](#)



RNCF2010DTE7R32
RES SMD 7.32 OHM 0.5% 1/3W 2010
Stackpole Electronics Inc.

[RFQ](#)