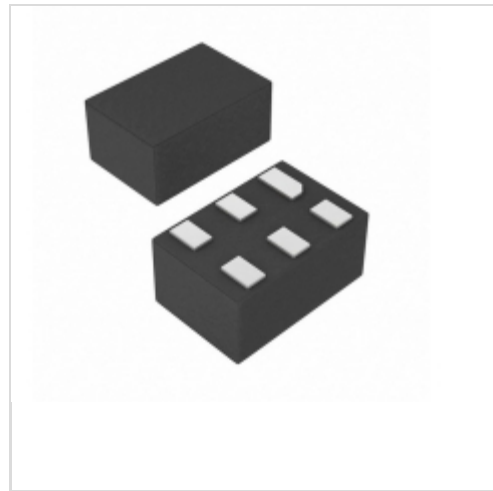


MAX4917BELT+T

Maxim Integrated

IC SWITCH 1X1 6UTDFN
Lead free / RoHS Compliant
Integrated Circuits (ICs)

[1.MAX4917BELT+T.pdf](#)

[2.MAX4917BELT+T.pdf](#)

Buy Now

Out Stock

0 pcs

Minimum:1

Multiples:100

Manufacturer lead time 10 weeks

PRICE

1 pcs	\$3.76
10 pcs	\$3.54
25 pcs	\$2.84
50 pcs	\$2.69
100 pcs	\$2.48
250 pcs	\$2.35
500 pcs	\$1.77

We can supply Maxim Integrated MAX4917BELT+T, use the request quote form to request MAX4917BELT+T price, Maxim Integrated Datasheet PDF and lead time. Zeanoit.com is a professional electronic components distributor. With 3+ Million line items of available electronic components can ship in short lead-time, over 250 thousand part numbers of electronic components in stock for immediately delivery, which may include part number MAX4917BELT+T. The price and lead time for MAX4917BELT+T depending on the quantity required, availability and warehouse location.

Shopping Process

1

Confirm the product

2

submit the order

3

payment

4

wait for delivery

5

receive the goods

Specifications

Voltage - Input:	2.3 V ~ 5.5 V
Supplier Device Package:	6-UDFN (2x2)
Series:	-
Sensing Method:	-
Packaging:	Tape & Reel (TR)
Package / Case:	6-WDFN
Operating Temperature:	-40°C ~ 85°C
Mounting Type:	Surface Mount
Function:	Current Limiting
Current - Output:	300mA
Accuracy:	-

Related products

MAX491C/D

in stock
[MAXIM](#)

RFQ


MAX4917AEUK+T

IC SWITCH 1X1 SOT23-5
[Maxim Integrated](#)

RFQ


MAX491C/D

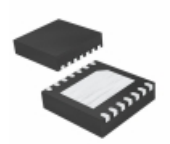
IC TXRX 1/1 RS422/RS485 DIE
[Maxim Integrated](#)

RFQ


MAX4917AELT+T

IC SWITCH 1X1 6UTDFN
[Maxim Integrated](#)

RFQ


MAX4919BETD+T

IC CTRL OVP/OCV BATT PWR 14-TDFN
[Maxim Integrated](#)

RFQ


MAX4917AELT+TG05

in stock
[MAXIM](#)

RFQ


MAX491C

in stock
[MAXIM](#)

RFQ


MAX4917AEUK

[MAXIM](#)

RFQ


MAX4916BELT+T

IC CURR LIMIT SWITCH 200MA 6UDFN
[Maxim Integrated](#)

RFQ


MAX4917BEUK+T

IC SWITCH 1X1 SOT23-5
[Maxim Integrated](#)

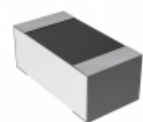
RFQ

Guess You May Looking For

RT0805CRB0728RL

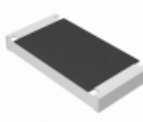
RES SMD 28 OHM 0.25% 1/8W 0805
[Yageo](#)

RFQ


CPF0603B1K62E1

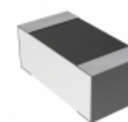
RES SMD 1.62KOHM 0.1% 1/16W 0603
[TE Connectivity Passive Product](#)

RFQ


ERJ-S1DF9092U

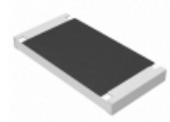
RES SMD 90.9K OHM 1% 3/4W 2010
[Panasonic Electronic Components](#)

RFQ


CPF0603B37K4E1

RES SMD 37.4KOHM 0.1% 1/16W 0603
[TE Connectivity Passive Product](#)

RFQ


ERJ-S1TF4870U

RES SMD 487 OHM 1% 1W 2512
[Panasonic Electronic Components](#)

RFQ


AT1206CRD0769K8L

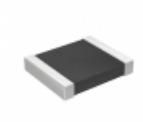
RES SMD 69.8KOHM 0.25% 1/4W 1206
[Yageo](#)

RFQ


AT1206CRD07732KL

RES SMD 732K OHM 0.25% 1/4W 1206
[Yageo](#)

RFQ


RT1210BRD07523RL

RES SMD 523 OHM 0.1% 1/4W 1210
[Yageo](#)

RFQ


AT1206CRD074K64L

RES SMD 4.64KOHM 0.25% 1/4W 1206
[Yageo](#)

RFQ


RG3216P-2871-B-T1

RES SMD 2.87K OHM 0.1% 1/4W 1206
[Susumu](#)

RFQ