

0326001.HXP



[Hamlin / Littelfuse](#)

FUSE CERM 1A 250VAC 125VDC 3AB
Lead free / RoHS Compliant
Circuit Protection

[0326001.HXP.pdf](#)

Buy Now

part#0326001.HXP is available, see description of 0326001.HXP as below .
use the request quote form to request 0326001.HXP price and lead time.
Buy Electronic Components at zeanoit.com .we are an independent distributor of electronic components with extensive inventory in stock.
The price and lead time for 0326001.HXP depending on the quantity required, availability and warehouse location.Contact us today and our sales team will send you quotation soon.
Email: sales@zeanoit.com

In Stock
277 pcs
Minimum:1
Multiples:100
Manufacturer lead time 10 weeks

PRICE	
1 pcs	\$1.81
5 pcs	\$1.722
10 pcs	\$1.636
50 pcs	\$1.32
100 pcs	\$1.119
250 pcs	\$1.091
500 pcs	\$0.918
1000 pcs	\$0.818
5000 pcs	\$0.718

Shopping Process

1

Confirm the product

2

submit the order

3

payment

4

wait for delivery

5

receive the goods

Specifications

Voltage Rating - DC:	125V
Voltage Rating - AC:	250V
Size / Dimension:	0.250" Dia x 1.250" L (6.35mm x 31.75mm)
Series:	326
Response Time:	Slow
Packaging:	Bulk
Package / Case:	3AB, 3AG, 1/4" x 1-1/4"
Operating Temperature:	-55°C ~ 125°C
Mounting Type:	Holder
Melting I²t:	16.3
Fuse Type:	Cartridge, Ceramic
DC Cold Resistance:	0.389 Ohm
Current Rating:	1A
Color:	-
Breaking Capacity @ Rated Voltage:	100A AC, 10kA DC
Approvals:	CE, CSA, PSE, UL

Related products



0326002.MXP
FUSE CERM 2A 250VAC 125VDC 3AB
[Littelfuse Inc.](#)

RFQ



0326001.VXP
FUSE CERM 1A 250VAC 125VDC 3AB
[Littelfuse Inc.](#)

RFQ



0326.800HXP
FUSE CERAMIC 800MA 250VAC 125VDC
[Littelfuse Inc.](#)

RFQ



0326.800MXP
FUSE CERAMIC 800MA 250VAC 125VDC
[Littelfuse Inc.](#)

RFQ



0326.800H
FUSE CERM 800MA 250VAC 3AB 3AG
[Littelfuse Inc.](#)

RFQ



0326001.H
FUSE CERAMIC 1A 250VAC 3AB 3AG
[Littelfuse Inc.](#)

RFQ



0326.800VXP
FUSE CERAMIC 800MA 250VAC 125VDC
[Littelfuse Inc.](#)

RFQ



0326001.MXP
FUSE CERM 1A 250VAC 125VDC 3AB
[Littelfuse Inc.](#)

RFQ



0326002.H
FUSE CERAMIC 2A 250VAC 3AB 3AG
[Littelfuse Inc.](#)

RFQ



0326002.HXP
FUSE CERM 2A 250VAC 125VDC 3AB
[Littelfuse Inc.](#)

RFQ

Guess You May Looking For



0034.5045
FUSE GLASS 1.6A 250VAC 5X20MM
[Schurter Inc.](#)

RFQ



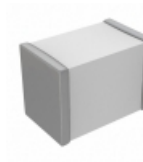
0034.3105.PT
FUSE GLASS 63MA 250VAC 5X20MM
[Schurter Inc.](#)

RFQ



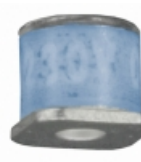
0327005.ZXS
FUSE AUTO 5A 32VDC BLADE MINI
[Littelfuse Inc.](#)

RFQ



SG300
GDT 300V 1KA SURFACE MOUNT
[Littelfuse Inc.](#)

RFQ



2035-60-SM
GDT 600V -12%, +15% 5KA SMD
[Bourns Inc.](#)

RFQ



SL1021A145R
GDT 145V 10KA THROUGH HOLE
[Littelfuse Inc.](#)

RFQ



PRG18BB471MB1RB
THERMISTOR PTC 470 OHM SMD
[Murata Electronics North America](#)

RFQ



15LR260SU
PTC RESETTABLE 15V 2.60A STRAP
[Littelfuse Inc.](#)

RFQ



SMF11A-E3-08
TVS DIODE 11VWM 18.2VC SMF
[Vishay Semiconductor Diodes Division](#)

RFQ



ACP DUC5V0R-HF
TVS DIODE 5VWM 12VC 0603
[Comchip Technology](#)

RFQ

