

JANTXV1N5304UR-1



Microsemi
DIODE CURRENT REG 100V
Contains lead / RoHS non-compliant
Integrated Circuits (ICs)

[JANTXV1N5304UR-1.pdf](#)

Buy Now

Out Stock
0 pcs
Minimum:1
Multiples:100
Manufacturer lead time 10 weeks

part#JANTXV1N5304UR-1 is available, see description of JANTXV1N5304UR-1 as below .

use the request quote form to request JANTXV1N5304UR-1 price and lead time. Buy Electronic Components at zeanoit.com .we are an independent distributor of electronic components with extensive inventory in stock.

The price and lead time for JANTXV1N5304UR-1 depending on the quantity required, availability and warehouse location.Contact us today and our sales team will send you quotation soon.

Email: sales@zeanoit.com

Shopping Process

1

Confirm the product

2

submit the order

3

payment

4

wait for delivery

5

receive the goods

Specifications

Voltage - Input:	100V (Max)
Supplier Device Package:	DO-213AB (MELF, LL41)
Series:	Military, MIL-PRF-19500/463
Sensing Method:	-
Packaging:	Bulk
Package / Case:	DO-213AB, MELF
Operating Temperature:	-65°C ~ 175°C
Mounting Type:	Surface Mount
Function:	Current Regulator
Current - Output:	1.8mA
Accuracy:	±10%

Related products



JANTXV1N5306-1
DIODE CURRENT REG 100V
[Microsemi Corporation](#)

RFQ



JANTXV1N5303UR-1
DIODE CURRENT REG 100V
[Microsemi Corporation](#)

RFQ



JANTXV1N5301UR-1
DIODE CURRENT REG 100V
[Microsemi Corporation](#)

RFQ



JANTXV1N5307UR-1
DIODE CURRENT REG 100V
[Microsemi Corporation](#)

RFQ



JANTXV1N5304-1
DIODE CURRENT REG 100V
[Microsemi Corporation](#)

RFQ



JANTXV1N5307-1
DIODE CURRENT REG 100V
[Microsemi Corporation](#)

RFQ



JANTXV1N5305UR-1
DIODE CURRENT REG 100V
[Microsemi Corporation](#)

RFQ



JANTXV1N5301-1
DIODE CURRENT REG 100V
[Microsemi Corporation](#)

RFQ



JANTXV1N5303-1
DIODE CURRENT REG 100V
[Microsemi Corporation](#)

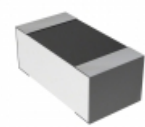
RFQ



JANTXV1N5306UR-1
DIODE CURRENT REG 100V
[Microsemi Corporation](#)

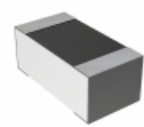
RFQ

Guess You May Looking For



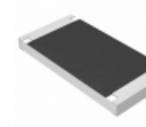
CPF0603B63R4E1
RES SMD 63.4 OHM 0.1% 1/16W 0603
[TE Connectivity Passive Product](#)

RFQ



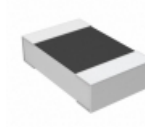
CPF0603B536RE1
RES SMD 536 OHM 0.1% 1/16W 0603
[TE Connectivity Passive Product](#)

RFQ



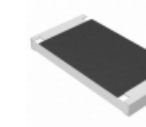
ERJ-S1TF3010U
RES SMD 301 OHM 1% 1W 2512
[Panasonic Electronic Components](#)

RFQ



CPF0805B221RE1
RES SMD 221 OHM 0.1% 1/10W 0805
[TE Connectivity Passive Product](#)

RFQ



ERJ-S1TF8660U
RES SMD 866 OHM 1% 1W 2512
[Panasonic Electronic Components](#)

RFQ



AT1206CRD07294RL
RES SMD 294 OHM 0.25% 1/4W 1206
[Yageo](#)

RFQ



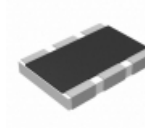
AT1206CRD074K64L
RES SMD 4.64KOHM 0.25% 1/4W 1206
[Yageo](#)

RFQ



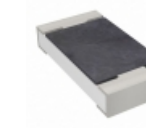
RG3216P-2743-B-T1
RES SMD 274K OHM 0.1% 1/4W 1206
[Susumu](#)

RFQ



RL1218JK-070R62L
RES SMD 0.62 OHM 1W 1812 WIDE
[Yageo](#)

RFQ



RT1206CRC0717R4L
RES SMD 17.4 OHM 0.25% 1/4W 1206
[Yageo](#)

RFQ