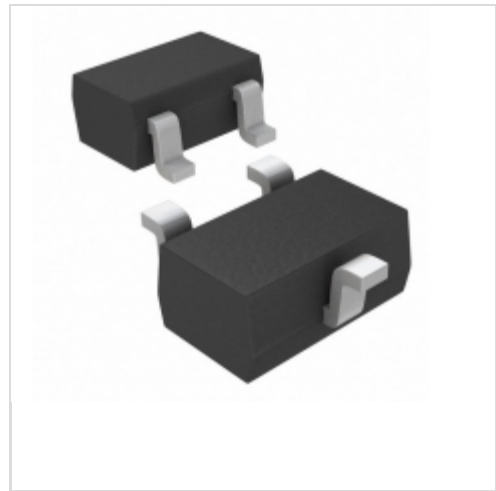


MAX6382XR29D3+T



Maxim Integrated

IC MPU/RESET CIRC 2.93V SC70-3

Lead free / RoHS Compliant

Integrated Circuits (ICs)

[1.MAX6382XR29D3+T.pdf](#)

[2.MAX6382XR29D3+T.pdf](#)

Buy Now

Out Stock

0 pcs

Minimum:1

Multiples:100

Manufacturer lead time 10 weeks

part#MAX6382XR29D3+T is available, see description of MAX6382XR29D3+T as below .

use the request quote form to request MAX6382XR29D3+T price and lead time. Buy Electronic Components at zeanoit.com .we are an independent distributor of electronic components with extensive inventory in stock.

The price and lead time for MAX6382XR29D3+T depending on the quantity required, availability and warehouse location.Contact us today and our sales team will send you quotation soon.

Email: sales@zeanoit.com

Shopping Process

1

Confirm the product

2

submit the order

3

payment

4

wait for delivery

5

receive the goods

Specifications

Voltage - Threshold:	2.93V
Type:	Simple Reset/Power-On Reset
Supplier Device Package:	SC-70-3
Series:	-
Reset Timeout:	140 ms Minimum
Reset:	Active High
Packaging:	Tape & Reel (TR)
Package / Case:	SC-70, SOT-323
Output:	Push-Pull, Totem Pole
Operating Temperature:	-40°C ~ 125°C (TA)
Number of Voltages Monitored:	1
Mounting Type:	Surface Mount

Related products



MAX6382XR44D3+T

[MAXIM](#)

RFQ



MAX6382XR26D1+T

IC MPU/RESET CIRC 2.60V SC70-3
[Maxim Integrated](#)

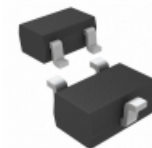
RFQ



MAX6382XR31D3+T

IC MPU/RESET CIRC 3.08V SC70-3
[Maxim Integrated](#)

RFQ



MAX6382XR43D2-T

IC MPU/RESET CIRC 4.30V SC70-3
[Maxim Integrated](#)

RFQ



MAX6382XR28D3+T

IC MPU/RESET CIRC 2.80V SC70-3
[Maxim Integrated](#)

RFQ



MAX6382XR40D3+T

IC MPU/RESET CIRC 4.00V SC70-3
[Maxim Integrated](#)

RFQ



MAX6382XR44D2+T

IC MPU/RESET CIRC 4.40V SC70-3
[Maxim Integrated](#)

RFQ



MAX6382XR24D6-T

IC MPU/RESET CIRC 2.40V SC70-3
[Maxim Integrated](#)

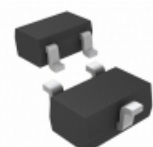
RFQ



MAX6382XR26D3+T

IC MPU/RESET CIRC 2.63V SC70-3
[Maxim Integrated](#)

RFQ



MAX6382XR25D2+T

IC MPU/RESET CIRC 2.50V SC70-3
[Maxim Integrated](#)

RFQ

Guess You May Looking For



RG1005P-4421-C-T10

RES SMD 4.42K OHM 1/16W 0402
[Susumu](#)

RFQ



TC164-FR-07412KL

RES ARRAY 4 RES 412K OHM 1206
[Yageo](#)

RFQ



CSC05A011K50GPA

RES ARRAY 4 RES 1.5K OHM 5SIP
[Vishay Dale](#)

RFQ



101-10KX

RES 10K OHM 1/4W 0.01% AXIAL
[Riedon](#)

RFQ



G24071931502J7A000

RES 15K OHM 5% WW
[Vishay BC Components](#)

RFQ



43J20RE

RES 20 OHM 3W 5% AXIAL
[Ohmite](#)

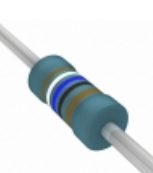
RFQ



HDM14JT2R20

RES 2.2 OHM 1/4W 5% AXIAL
[Stackpole Electronics Inc.](#)

RFQ



SFR25H0001960FR500

RES 196 OHM 1/2W 1% AXIAL
[Vishay BC Components](#)

RFQ



CMF551M0000FKR6

RES 1M OHM 1/2W 1% AXIAL
[Vishay Dale](#)

RFQ



RN60C6001DB14

RES 6K OHM 1/4W .5% AXIAL
[Vishay Dale](#)

RFQ