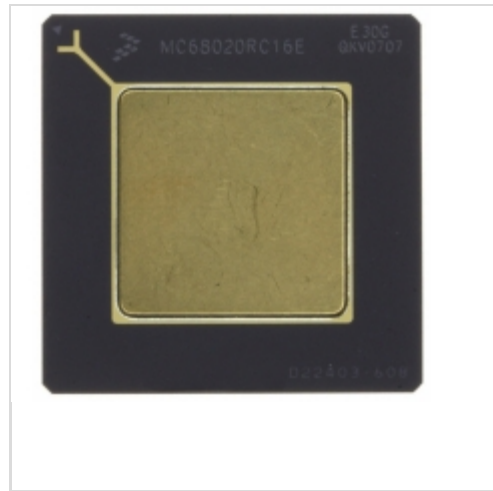


## MC68020CRC25E



[NXP Semiconductors / Freescale](#)

IC MPU M680X0 25MHZ 114PGA

Lead free / RoHS Compliant

Integrated Circuits (ICs)

[MC68020CRC25E.pdf](#)

[Buy Now](#)

We can supply MC68020CRC25E, use the request quote form to request MC68020CRC25E price and lead time. Zeano is a professional electronic components distributor. With 3+ Million line items of available electronic components can ship in short lead-time, over 250 thousand part numbers of electronic components in stock for immediately delivery, which may include part number MC68020CRC25E. The price and lead time for MC68020CRC25E depending on the quantity required and warehouse location. Contact us and our sales representative will provide you price. We look forward to work with you.

### Shopping Process



**1**  
Confirm the product



**2**  
submit the order



**3**  
payment



**4**  
wait for delivery

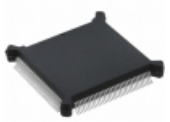


**5**  
receive the goods

### Specifications

<b>Voltage - I/O:</b>	5.0V
<b>USB:</b>	-
<b>Supplier Device Package:</b>	114-PGA (34.54x34.54)
<b>Speed:</b>	25MHz
<b>Series:</b>	M680x0
<b>Security Features:</b>	-
<b>SATA:</b>	-
<b>RAM Controllers:</b>	-
<b>Packaging:</b>	Tray
<b>Package / Case:</b>	114-BPGA
<b>Operating Temperature:</b>	-40°C ~ 85°C (TA)
<b>Number of Cores/Bus Width:</b>	1 Core, 32-Bit
<b>Graphics Acceleration:</b>	No
<b>Ethernet:</b>	-
<b>Display &amp; Interface Controllers:</b>	-
<b>Core Processor:</b>	68020
<b>Co-Processors/DSP:</b>	-
<b>Additional Interfaces:</b>	-

### Related products



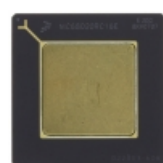
**MC68020CEH16E**  
IC MPU M680X0 166MHZ 132QFP  
[NXP USA Inc.](#)

[RFQ](#)



**MC68020EH20E**  
IC MPU M680X0 20MHZ 132QFP  
[NXP USA Inc.](#)

[RFQ](#)



**MC68020CRC16E**  
IC MPU M680X0 166MHZ 114PGA  
[NXP USA Inc.](#)

[RFQ](#)



**MC68020EH25E**  
IC MPU M680X0 25MHZ 132QFP  
[NXP USA Inc.](#)

[RFQ](#)



**MC68020CRC20E**  
IC MPU M680X0 20MHZ 114PGA  
[NXP USA Inc.](#)

[RFQ](#)



**MC68020FC16**  
in stock  
[FREESCALE](#)

[RFQ](#)



**MC68020EH33E**  
IC MPU M680X0 33MHZ 132QFP  
[NXP USA Inc.](#)

[RFQ](#)



**MC68020CFC16E**  
[MOTOROLA](#)

[RFQ](#)



**MC68020CEH25E**  
IC MPU M680X0 25MHZ 132QFP  
[NXP USA Inc.](#)

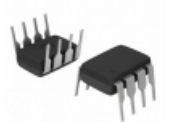
[RFQ](#)



**MC68020EH16E**  
IC MPU M680X0 166MHZ 132QFP  
[NXP USA Inc.](#)

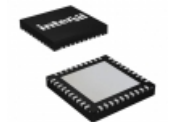
[RFQ](#)

### Guess You May Looking For



**DPA423P**  
IC CONV DC-DC DPA SWITCH 8DIP  
[Power Integrations](#)

[RFQ](#)



**ISL95838IRTZ**  
IC PWM CTLR DUAL 3+2 40-TQFN  
[Intersil](#)

[RFQ](#)



**IDT72P51339L6BB**  
IC FLOW CTRL 36BIT 256-BGA  
[IDT, Integrated Device Technology Inc](#)

[RFQ](#)



**IL711-3**  
DGTL ISO 2.5KV GEN PURP 8SOIC  
[NVE Corp/Isolation Products](#)

[RFQ](#)



**ADUM1286WBRZ-RL7**  
DGTL ISO 3KV 2CH GEN PURP 8SOIC  
[Analog Devices Inc.](#)

[RFQ](#)



**6N137S(TB)-V**  
OPTOISO 5KV 1CH OPEN COLL 8SMD  
[Everlight Electronics Co Ltd](#)

[RFQ](#)



**HCPL-2631#520**  
OPTOISO 5KV 2CH OPEN COL 8DIP GW  
[Broadcom Limited](#)

[RFQ](#)



**HCPL-7723-060E**  
OPTOISO 3.75KV PUSH PULL 8DIP  
[Broadcom Limited](#)

[RFQ](#)



**EL3H7(K)(TA)-G**  
OPTOISOLATOR 3.75KV TRANS 4-SSOP  
[Everlight Electronics Co Ltd](#)

[RFQ](#)



**EL3H7(A)(EB)-G**  
OPTOISOLATOR 3.75KV TRANS 4-SSOP  
[Everlight Electronics Co Ltd](#)

[RFQ](#)