

CAT24M01XI-T2



[AMI Semiconductor / ON Semiconductor](#)

IC EEPROM 1MBIT 1MHZ 8SOIC
Lead free / RoHS Compliant
Integrated Circuits (ICs)

- [1.CAT24M01XI-T2.pdf](#)
- [2.CAT24M01XI-T2.pdf](#)

Buy Now

Out Stock

0 pcs

Minimum:1

Multiples:100

Manufacturer lead time 10 weeks

Images are for reference only.

See Product Specifications for product details.

If you are interested to buy CAT24M01XI-T2,Just Email us.

Sales@zeanoit.com

our sales team will reply you within 24 hours

Shopping Process

1

Confirm the product

2

submit the order

3

payment

4

wait for delivery

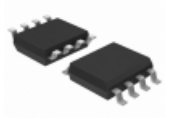
5

receive the goods

Specifications

Voltage - Supply:	1.8 V ~ 5.5 V
Supplier Device Package:	8-SOIC
Speed:	1MHz
Series:	-
Packaging:	Tape & Reel (TR)
Package / Case:	8-SOIC (0.209", 5.30mm Width)
Operating Temperature:	-40°C ~ 85°C (TA)
Memory Type:	Non-Volatile
Memory Size:	1Mb (128K x 8)
Memory Format:	EEPROM
Interface:	I ² C, 2-Wire Serial

Related products



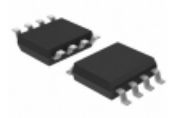
CAT24M01XI
IC EEPROM 1MBIT 1MHZ 8SOIC
[ON Semiconductor](#)

RFQ

molex

CAT24M01WI
[ON](#)

RFQ



CAT24M01WI-G
IC EEPROM 1MBIT 1MHZ 8SOIC
[ON Semiconductor](#)

RFQ



CAT24S128C4ATR
IC MEM EEPROM 128KB I2C SOT563
[ON Semiconductor](#)

RFQ

molex

CAT24M01YE-GT3
[ON](#)

RFQ



CAT24M01YI-GT3JN
IC EEPROM 1MBIT 1MHZ 8TSSOP
[ON Semiconductor](#)

RFQ



CAT24M01YI-GT3
IC EEPROM 1MBIT 1MHZ 8TSSOP
[ON Semiconductor](#)

RFQ



CAT24W0C02J
[CATALYST](#)

RFQ



CAT24M01WI-GT3
IC EEPROM 1MBIT 1MHZ 8SOIC
[ON Semiconductor](#)

RFQ



CAT24M01LI-G
IC EEPROM 1MBIT 1MHZ 8DIP
[ON Semiconductor](#)

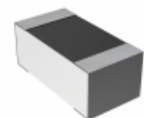
RFQ

Guess You May Looking For



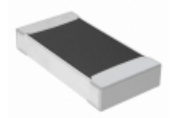
ERJ-MP2KF6M0U
RES SMD 0.006 OHM 1% 1/2W 1206
[Panasonic Electronic Components](#)

RFQ



5-2176088-6
RES SMD 3.32K OHM 0.1% 1/6W 0603
[TE Connectivity Passive Product](#)

RFQ



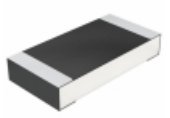
RMC1206FT14R3
RES SMD 14.3 OHM 1% 1/4W 1206
[Stackpole Electronics Inc.](#)

RFQ



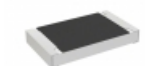
RV0805FR-073M6L
RES SMD 3.6M OHM 1% 1/8W 0805
[Yageo](#)

RFQ



CRCW12061R18FKTA
RES SMD 1.18 OHM 1% 1/4W 1206
[Vishay Dale](#)

RFQ



RCS08051K60FKEA
RES SMD 1.6K OHM 1% 0.4W 0805
[Vishay Dale](#)

RFQ



RG2012P-3243-D-T5
RES SMD 324K OHM 0.5% 1/8W 0805
[Susumu](#)

RFQ



RNCF1206DTC20K5
RES SMD 20.5K OHM 0.5% 1/3W 1206
[Stackpole Electronics Inc.](#)

RFQ



RT0603BRD075K56L
RES SMD 5.56KOHM 0.1% 1/10W 0603
[Yageo](#)

RFQ



RT0402CRE07210RL
RES SMD 210 OHM 0.25% 1/16W 0402
[Yageo](#)

RFQ