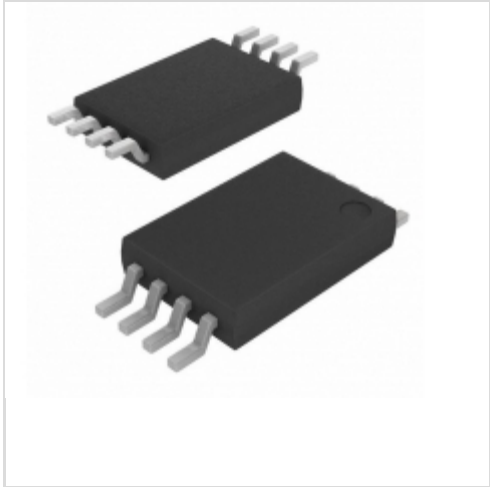


AT24C128-10TU-2.7

Microchip Technology

IC EEPROM 128KBIT 1MHZ 8TSSOP

Lead free / RoHS Compliant

Integrated Circuits (ICs)

[AT24C128-10TU-2.7.pdf](#)
Buy Now

We can supply AT24C128-10TU-2.7, use the request quote form to request AT24C128-10TU-2.7 price and lead time. Zeano is a professional electronic components distributor. With 3+ Million line items of available electronic components can ship in short lead-time, over 250 thousand part numbers of electronic components in stock for immediately delivery, which may include part number AT24C128-10TU-2.7. The price and lead time for AT24C128-10TU-2.7 depending on the quantity required and warehouse location. Contact us and our sales representative will provide you price. We look forward to work with you.

Shopping Process
1
Confirm the product
2
submit the order
3
payment
4
wait for delivery
5
receive the goods
Specifications

Voltage - Supply:	2.7 V ~ 5.5 V
Supplier Device Package:	8-TSSOP
Speed:	400kHz, 1MHz
Series:	-
Packaging:	Tube
Package / Case:	8-TSSOP (0.173", 4.40mm Width)
Operating Temperature:	-40°C ~ 85°C (TA)
Memory Type:	Non-Volatile
Memory Size:	128Kb (16K x 8)
Memory Format:	EEPROM
Interface:	I ² C, 2-Wire Serial

Related products

AT24C128-10TI-2.7

IC EEPROM 128KBIT 1MHZ 8TSSOP

[Microchip Technology](#)

RFQ


AT24C128AN-10SI-2.7

in stock

[ATMEL](#)

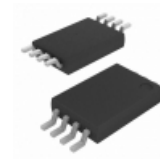
RFQ


AT24C128-W1.8-11

Two-wire Serial EEPROMs

[ATMEL](#)

RFQ


AT24C128-10TI-1.8

IC EEPROM 128KBIT 400KHZ 8TSSOP

[Microchip Technology](#)

RFQ


AT24C128-10TU-1.8

IC EEPROM 128KBIT 400KHZ 8TSSOP

[Microchip Technology](#)

RFQ


AT24C128-10TQ-2.7

in stock

[ATMEL](#)

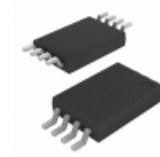
RFQ


AT24C128-W2.7-11

Two-wire Serial EEPROMs

[ATMEL](#)

RFQ


AT24C128-10TU-1.8-T

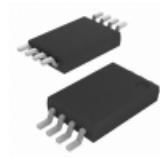
IC EEPROM 128KBIT 400KHZ 8TSSOP

[Microchip Technology](#)

RFQ


AT24C128AN-10SU-2.7
[ATMEL](#)

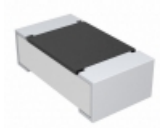
RFQ


AT24C128-10TU-2.7-T

IC EEPROM 128KBIT 1MHZ 8TSSOP

[Microchip Technology](#)

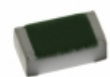
RFQ

Guess You May Looking For

CRCW060322R6FKEA

RES SMD 22.6 OHM 1% 1/10W 0603

[Vishay Dale](#)

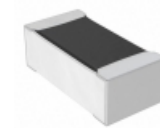
RFQ


TNPW04026K49BEED

RES SMD 6.49KOHM 0.1% 1/16W 0402

[Vishay Dale](#)

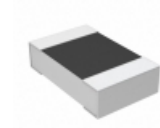
RFQ


CPF0402B4K53E1

RES SMD 4.53KOHM 0.1% 1/16W 0402

[TE Connectivity Passive Product](#)

RFQ


8-2176091-5

RES SMD 453 OHM 0.1% 1/4W 0805

[TE Connectivity Passive Product](#)

RFQ


CRCW04021K00FKEE

RES SMD 1K OHM 1% 1/16W 0402

[Vishay Dale](#)

RFQ


CRG0805F240R

RES SMD 240 OHM 1% 1/8W 0805

[TE Connectivity Passive Product](#)

RFQ


RT0805FRD0751KL

RES SMD 51K OHM 1% 1/8W 0805

[Yageo](#)

RFQ


RNCF0805DKE8R06

RES SMD 8.06 OHM 0.5% 1/8W 0805

[Stackpole Electronics Inc.](#)

RFQ


AC2010JK-07120KL

RES SMD 120K OHM 5% 3/4W 2010

[Yageo](#)

RFQ


AC2512JK-0727KL

RES SMD 27K OHM 5% 1W 2512

[Yageo](#)

RFQ