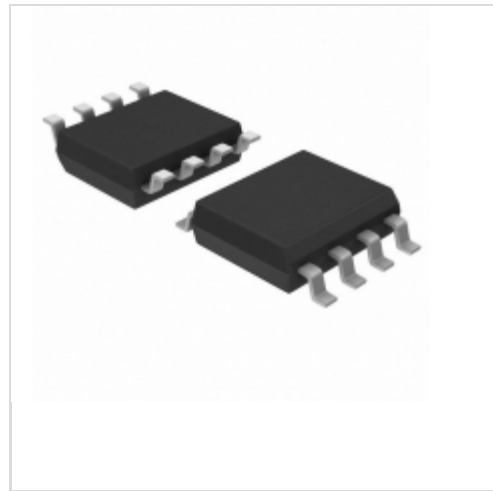


MAX5905ESA+



Maxim Integrated

IC HOT-SWAP CTRLR DUAL 8-SOIC

Lead free / RoHS Compliant

Integrated Circuits (ICs)

[1.MAX5905ESA+.pdf](#)

[2.MAX5905ESA+.pdf](#)

Buy Now

In Stock

200 pcs

Minimum:1

Multiples:100

Manufacturer lead time 10 weeks

PRICE

1 pcs	\$9.11
10 pcs	\$8.65
25 pcs	\$6.31
50 pcs	\$5.99
100 pcs	\$4.20
250 pcs	\$4.17

We can supply MAX5905ESA+, use the request quote form to request MAX5905ESA+ price and lead time. Zeano is a professional electronic components distributor. With 3+ Million line items of available electronic components can ship in short lead-time, over 250 thousand part numbers of electronic components in stock for immediately delivery, which may include part number MAX5905ESA+. The price and lead time for MAX5905ESA+ depending on the quantity required and warehouse location. Contact us and our sales representative will provide you price. We look forward to work with you.

Shopping Process

1

Confirm the product

2

submit the order

3

payment

4

wait for delivery

5

receive the goods

Specifications

Voltage - Supply:	1 V ~ 13.2 V
Type:	Hot Swap Controller, Sequencer
Supplier Device Package:	8-SOIC
Series:	VariableSpeed/BiLevel™
Programmable Features:	Circuit Breaker, Current Limit, Fault Timeout
Packaging:	Tube
Package / Case:	8-SOIC (0.154", 3.90mm Width)
Operating Temperature:	-40°C ~ 85°C
Number of Channels:	2
Mounting Type:	Surface Mount
Internal Switch(s):	No
Features:	Latched Fault, UVLO
Feature Pins:	ON
Current - Supply:	1.2mA
Current - Output (Max):	-
Applications:	PCI Express®

Related products

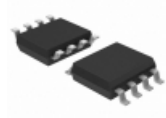


MAX5906

in stock

[MAXIM](#)

RFQ



MAX5905ESA+T

IC HOT-SWAP CTRLR DUAL 8-SOIC

[Maxim Integrated](#)

RFQ



MAX5905

in stock

[MAXIM](#)

RFQ

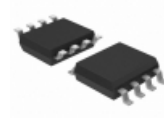


MAX5904USA+

IC HOT-SWAP CTRLR DUAL 8-SOIC

[Maxim Integrated](#)

RFQ

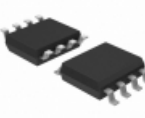


MAX5904USA+T

IC HOT-SWAP CTRLR DUAL 8-SOIC

[Maxim Integrated](#)

RFQ



MAX5905USA+

IC HOT-SWAP CTRLR DUAL 8-SOIC

[Maxim Integrated](#)

RFQ

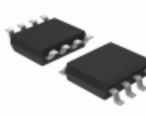


MAX5904USA

in stock

[MAXIM](#)

RFQ



MAX5905USA+T

IC HOT-SWAP CTRLR DUAL 8-SOIC

[Maxim Integrated](#)

RFQ



MAX5905USA

in stock

[MAXIM](#)

RFQ

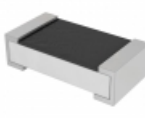


MAX5904ESA-T

[MAXIM](#)

RFQ

Guess You May Looking For

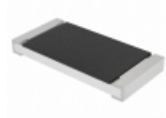


PE0603DRF7W0R025L

RES SMD 0.025 OHM 0.5% 1/5W 0603

[Yageo](#)

RFQ



CRCW251213K3FKEGHP

RES SMD 13.3K OHM 1% 1.5W 2512

[Vishay Dale](#)

RFQ

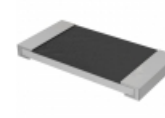


CSS1206JT8L00

RES SMD 0.008 OHM 5% 1W 1206

[Stackpole Electronics Inc.](#)

RFQ

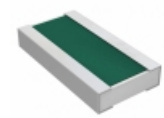


CSR2512FT15L0

RES SMD 0.015 OHM 1% 2W 2512

[Stackpole Electronics Inc.](#)

RFQ

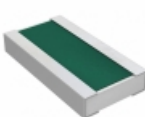


PRG3216P-2941-B-T5

RES SMD 2.94K OHM 1W 1206 WIDE

[Susumu](#)

RFQ



PRG3216P-63R4-B-T5

RES SMD 63.4 OHM 1W 1206 WIDE

[Susumu](#)

RFQ

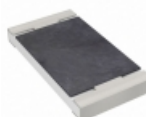


TNPW080547K5BETA

RES SMD 47.5K OHM 0.1% 1/8W 0805

[Vishay Dale](#)

RFQ

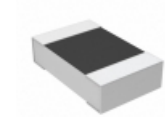


RT2010DKE0724RL

RES SMD 24 OHM 0.5% 1/2W 2010

[Yageo](#)

RFQ



RP73D2A40K2BTDF

RES SMD 40.2K OHM 0.1% 1/8W 0805

[TE Connectivity Passive Product](#)

RFQ



RG1005P-8451-W-T5

RES SMD 8.45K OHM 1/16W 0402

[Susumu](#)

RFQ

