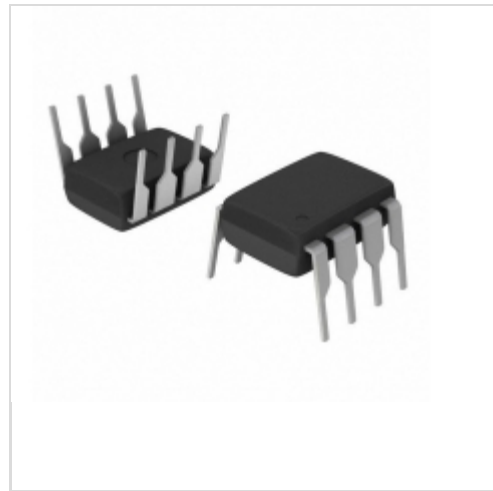


AT24C02A-10PI-1.8

Microchip Technology

IC EEPROM 2KBIT 400KHZ 8DIP
 Contains lead / RoHS non-compliant
 Integrated Circuits (ICs)

[AT24C02A-10PI-1.8.pdf](#)

Buy Now

Images are for reference only.

See Product Specifications for product details.

If you are interested to buy AT24C02A-10PI-1.8, Just Email us.

Sales@zeanoit.com

our sales team will reply you within 24 hours

Shopping Process

1

Confirm the product

2

submit the order

3

payment

4

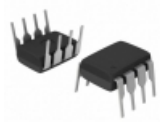
wait for delivery

5

receive the goods

Specifications

Voltage - Supply:	1.8 V ~ 5.5 V
Supplier Device Package:	8-PDIP
Speed:	400kHz
Series:	-
Packaging:	Tube
Package / Case:	8-DIP (0.300", 7.62mm)
Operating Temperature:	-40°C ~ 85°C (TA)
Memory Type:	Non-Volatile
Memory Size:	2Kb (256 x 8)
Memory Format:	EEPROM
Interface:	I ² C, 2-Wire Serial

Related products


AT24C02A-10PI-2.5
 IC EEPROM 2KBIT 400KHZ 8DIP
[Microchip Technology](#)

RFQ



AT24C02A-10PC-2.7
 IC EEPROM 2KBIT 400KHZ 8DIP
[Microchip Technology](#)

RFQ



AT24C02A-10PQ-2.7
 in stock
[ATMEL](#)

RFQ



AT24C02A-10PU-1.8
 IC EEPROM 2KBIT 400KHZ 8DIP
[Microchip Technology](#)

RFQ



AT24C02A-10PC-2.7
 in stock
[ATMEL](#)

RFQ



AT24C02A-10PI-2.7
 IC EEPROM 2KBIT 400KHZ 8DIP
[Microchip Technology](#)

RFQ



AT24C02A-10PI
 in stock
[ATMEL](#)

RFQ



AT24C02A-10PI
 IC EEPROM 2KBIT 400KHZ 8DIP
[Microchip Technology](#)

RFQ



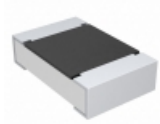
AT24C02A-10PE-2.7
 in stock
[ATMEL](#)

RFQ



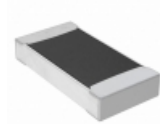
AT24C02A-10PI-2.5
 in stock
[ATMEL](#)

RFQ

Guess You May Looking For


CRCW08053K60JNEA
 RES SMD 3.6K OHM 5% 1/8W 0805
[Vishay Dale](#)

RFQ



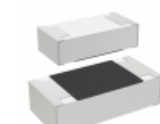
RMCF1206FT270K
 RES SMD 270K OHM 1% 1/4W 1206
[Stackpole Electronics Inc.](#)

RFQ



RE1206DRE07140RL
 RES SMD 140 OHM 0.5% 1/4W 1206
[Yageo](#)

RFQ



CR0603-FX-5760ELF
 RES SMD 576 OHM 1% 1/10W 0603
[Bourns Inc.](#)

RFQ



AA0603FR-072K4L
 RES SMD 2.4K OHM 1% 1/10W 0603
[Yageo](#)

RFQ



CRCW04023M92FKTD
 RES SMD 3.92M OHM 1% 1/16W 0402
[Vishay Dale](#)

RFQ



RG1005P-8060-D-T10
 RES SMD 806 OHM 0.5% 1/16W 0402
[Susumu](#)

RFQ



AT0402DRE0736KL
 RES SMD 36K OHM 0.5% 1/16W 0402
[Yageo](#)

RFQ



RT1206DRD0762KL
 RES SMD 62K OHM 0.5% 1/4W 1206
[Yageo](#)

RFQ



RT0805CRE0719K6L
 RES SMD 19.6KOHM 0.25% 1/8W 0805
[Yageo](#)

RFQ