

## TCF250-100T-B-0.5



[Hamlin / Littelfuse](#)

POLYSWITCH PTC RESET 0.1A CHIP

Lead free / RoHS Compliant

Circuit Protection

[1.TCF250-100T-B-0.5.pdf](#)

[2.TCF250-100T-B-0.5.pdf](#)

[Buy Now](#)

We can supply Hamlin / Littelfuse TCF250-100T-B-0.5, use the request quote form to request TCF250-100T-B-0.5 pirce, Hamlin / Littelfuse Datasheet PDF and lead time.Zeanoit.com is a professional electronic components distributor. With 3+ Million line items of available electronic components can ship in short lead-time, over 250 thousand part numbers of electronic components in stock for immediately delivery, which may include part number TCF250-100T-B-0.5.The price and lead time for TCF250-100T-B-0.5 depending on the quantity required, availability and warehouse location.

**Out Stock**

**0 pcs**

Minimum:1

Multiples:100

Manufacturer lead time 10 weeks

### PRICE

1 pcs	\$0.47
5 pcs	\$0.456
10 pcs	\$0.441
50 pcs	\$0.371
100 pcs	\$0.308
250 pcs	\$0.28
500 pcs	\$0.238
1000 pcs	\$0.21
5000 pcs	\$0.189

## Shopping Process

**1**

Confirm the product

**2**

submit the order

**3**

payment

**4**

wait for delivery

**5**

receive the goods

## Specifications

<b>Voltage - Max:</b>	60V (250V Int)
<b>Type:</b>	Polymeric
<b>Time to Trip:</b>	200ms
<b>Thickness (Max):</b>	0.091" (2.30mm)
<b>Size / Dimension:</b>	0.187" Dia x 0.187" W (4.75mm x 4.75mm)
<b>Series:</b>	PolySwitch®, TCF250
<b>Resistance - Post Trip (R1) (Max):</b>	24 Ohm
<b>Resistance - Initial (Ri) (Min):</b>	14 Ohm
<b>Resistance - 25°C (Typ):</b>	-
<b>Ratings:</b>	-
<b>Packaging:</b>	Bulk
<b>Package / Case:</b>	Nonstandard SMD
<b>Operating Temperature:</b>	-40°C ~ 85°C
<b>Mounting Type:</b>	Surface Mount
<b>Lead Spacing:</b>	-
<b>Height - Seated (Max):</b>	-
<b>Current - Trip (It):</b>	150mA
<b>Current - Max:</b>	3A
<b>Current - Hold (Ih) (Max):</b>	90mA
<b>Approvals:</b>	-

## Related products

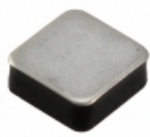


**TCF2012X-272T20**

in stock

[TAI-TE](#)

RFQ

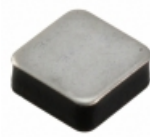


**TCF250-100RT-B-0.5**

POLYSWITCH PTC RESET 0.1A CHIP

[Littelfuse Inc.](#)

RFQ

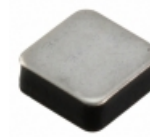


**TCF250-100T-RA-B-0.5**

POLYSWITCH PTC RESET 0.1A CHIP

[Littelfuse Inc.](#)

RFQ

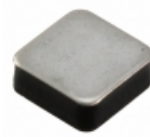


**TCF250-120T-RA-B-0.5**

POLYSWITCH PTC RESET 0.12A CHIP

[Littelfuse Inc.](#)

RFQ

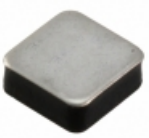


**TCF250-100T-RB-B-0.5**

POLYSWITCH PTC RESET 0.1A CHIP

[Littelfuse Inc.](#)

RFQ



**TCF250-120**

POLYSWITCH PTC RESET 0.12A CHIP

[Littelfuse Inc.](#)

RFQ



**TCF2012Y-104T40**

[JAT](#)

RFQ



**TCF25**

FUSE RECT 25A 600VAC/300DC BLADE

[Eaton](#)

RFQ



**TCF20**

FUSE RECT 20A 600VAC/300DC BLADE

[Eaton](#)

RFQ



**TCF250-120T-B-0.5**

POLYSWITCH PTC RESET 0.12A CHIP

[Littelfuse Inc.](#)

RFQ

## Guess You May Looking For



**SMCJ58CA-E3/57T**

TVS DIODE 58VWM 93.6VC SMC

[Vishay Semiconductor Diodes Division](#)

RFQ



**824551281**

TVS DIODE 28VWM 45.4VC DO214AB

[Wurth Electronics Inc.](#)

RFQ

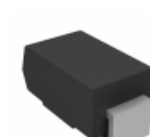


**SMF8V0A-HM3-08**

TVS DIODE 8VWM 13.6VC DO-219AB

[Vishay Semiconductor Diodes Division](#)

RFQ



**SMA6J11A-E3/5A**

TVS DIODE 11VWM 21.5VC SMA

[Vishay Semiconductor Diodes Division](#)

RFQ



**SMF10A-E3-18**

TVS DIODE 10VWM 17VC DO-219AB

[Vishay Semiconductor Diodes Division](#)

RFQ



**SMBJ43A-M3/5B**

TVS DIODE 43VWM 69.4VC DO-215AA



**TGL41-62A-E3/97**

TVS DIODE 53VWM 85VC MELF



**P6SMB58A**

TVS DIODE 52.78VWM 79.8VC SMD



**SM6T36AHE3/52**

TVS DIODE 30.8VWM 49.9VC SMB



**SMBJ10AHE3/52**

TVS DIODE 10VWM 17VC SMB

RFQ

RFQ

RFQ

RFQ

RFQ