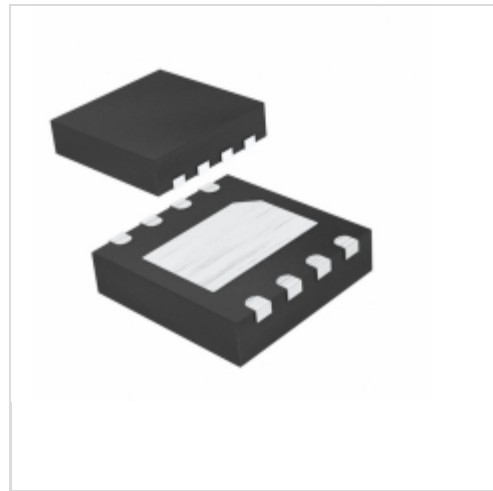


## MAX6770TALD2+T



**Maxim Integrated**

IC REG LINEAR 5V/ADJ 8-TDFN

Lead free / RoHS Compliant

Integrated Circuits (ICs)

[1.MAX6770TALD2+T.pdf](#)

[2.MAX6770TALD2+T.pdf](#)

**Buy Now**

We can supply MAX6770TALD2+T, use the request quote form to request MAX6770TALD2+T price and lead time. Zeano is a professional electronic components distributor. With 3+ Million line items of available electronic components can ship in short lead-time, over 250 thousand part numbers of electronic components in stock for immediately delivery, which may include part number MAX6770TALD2+T. The price and lead time for MAX6770TALD2+T depending on the quantity required and warehouse location. Contact us and our sales representative will provide you price. We look forward to work with you.

**Out Stock**

**0 pcs**

Minimum: 1

Multiples: 100

Manufacturer lead time 10 weeks

**PRICE**

1 pcs	\$8.57
10 pcs	\$8.08
25 pcs	\$6.47
50 pcs	\$6.14
100 pcs	\$5.66
250 pcs	\$5.37
500 pcs	\$4.04

### Shopping Process

**1**

**Confirm the product**

**2**

**submit the order**

**3**

**payment**

**4**

**wait for delivery**

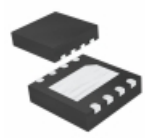
**5**

**receive the goods**

### Specifications

<b>Voltage - Threshold:</b>	4.625V, Adj
<b>Type:</b>	Regulator/Supervisor
<b>Supplier Device Package:</b>	8-TDFN-EP (3x3)
<b>Series:</b>	-
<b>Reset Timeout:</b>	8.75 ms Minimum
<b>Reset:</b>	Active Low
<b>Packaging:</b>	Cut Tape (CT)
<b>Package / Case:</b>	8-WDFN Exposed Pad
<b>Output:</b>	Push-Pull, Totem Pole
<b>Operating Temperature:</b>	-40°C ~ 125°C (TA)
<b>Number of Voltages Monitored:</b>	1
<b>Mounting Type:</b>	Surface Mount

### Related products



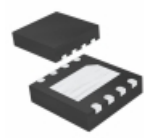
**MAX6770TALD0+T**  
IC REG LINEAR 5V/ADJ 8-TDFN  
[Maxim Integrated](#)

[RFQ](#)



**MAX676BMJP**  
in stock  
[MAXIM](#)

[RFQ](#)



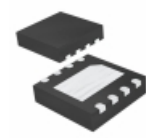
**MAX6770TAVD3+T**  
IC REG LINEAR 1.8V/ADJ 8-TDFN  
[Maxim Integrated](#)

[RFQ](#)



**MAX6770TASD2T**  
in stock  
[MAXIM](#)

[RFQ](#)



**MAX6770TAVD2+T**  
IC REG LINEAR 1.8V/ADJ 8-TDFN  
[Maxim Integrated](#)

[RFQ](#)



**MAX676EUB**  
in stock  
[MAXIM](#)

[RFQ](#)



**MAX676BEWP**  
in stock  
[MAXIM](#)

[RFQ](#)



**MAX6770TALD2T**  
in stock  
[MAXIM](#)

[RFQ](#)



**MAX6770**  
in stock  
[MAXIM](#)

[RFQ](#)



**MAX6770TALD2+T**  
in stock  
[MAXIM](#)

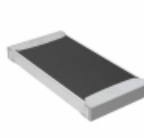
[RFQ](#)

### Guess You May Looking For



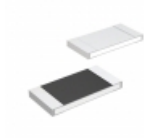
**9T06031A4870FBHFT**  
RES SMD 487 OHM 1% 1/10W 0603  
[Yageo](#)

[RFQ](#)



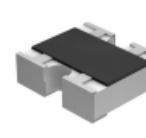
**TNPW2512383KBETG**  
RES SMD 383K OHM 0.1% 1/2W 2512  
[Vishay Dale](#)

[RFQ](#)



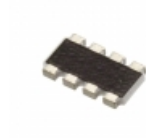
**MCR10EZPF8870**  
RES SMD 887 OHM 1% 1/8W 0805  
[Rohm Semiconductor](#)

[RFQ](#)



**EXB-34V103JV**  
RES ARRAY 2 RES 10K OHM 0606  
[Panasonic Electronic Components](#)

[RFQ](#)



**YC324-FK-072K55L**  
RES ARRAY 4 RES 2.55K OHM 2012  
[Yageo](#)

[RFQ](#)



**MBB02070C4022DC100**  
RES 40.2K OHM 0.6W 0.5% AXIAL  
[Vishay BC Components](#)

[RFQ](#)



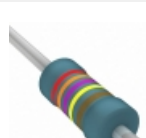
**CMF55470R00FKR6**  
RES 470 OHM 1/2W 1% AXIAL  
[Vishay Dale](#)

[RFQ](#)



**W3M22R0J**  
RES 22 OHM 3W 5% AXIAL  
[Bourns Inc.](#)

[RFQ](#)



**HVR3700002374FR500**  
RES 2.37M OHM 1/2W 1% AXIAL  
[Vishay BC Components](#)

[RFQ](#)



**CMF55221K00DHEB**  
RES 221K OHM 1/2W 0.5% AXIAL  
[Vishay Dale](#)

[RFQ](#)