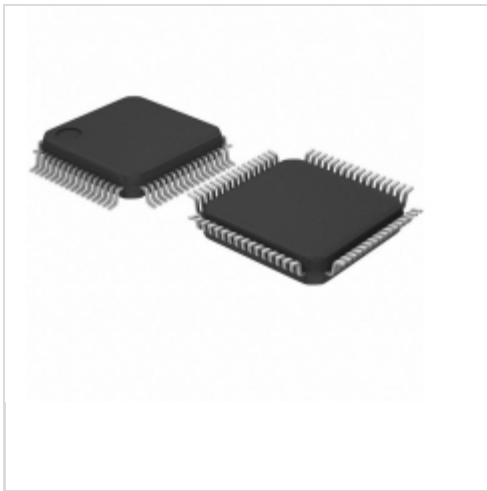


STM8AF6289TAY



[STMicroelectronics](#)

IC MCU 8BIT 64KB FLASH 64LQFP

Lead free / RoHS Compliant

Integrated Circuits (ICs)

[STM8AF6289TAY.pdf](#)

[Buy Now](#)

Out Stock

0 pcs

Minimum:1

Multiples:100

Manufacturer lead time 10 weeks

We can supply STM8AF6289TAY, use the request quote form to request STM8AF6289TAY price and lead time. Zeano is a professional electronic components distributor. With 3+ Million line items of available electronic components can ship in short lead-time, over 250 thousand part numbers of electronic components in stock for immediately delivery, which may include part number STM8AF6289TAY. The price and lead time for STM8AF6289TAY depending on the quantity required and warehouse location. Contact us and our sales representative will provide you price. We look forward to work with you.

Shopping Process

1

Confirm the product

2

submit the order

3

payment

4

wait for delivery

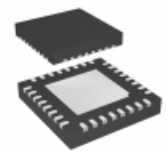
5

receive the goods

Specifications

Voltage - Supply (Vcc/Vdd):	3 V ~ 5.5 V
Speed:	24MHz
Series:	STM8A
RAM Size:	6K x 8
Program Memory Type:	FLASH
Program Memory Size:	64KB (64K x 8)
Peripherals:	Brown-out Detect/Reset, POR, PWM, WDT
Packaging:	Tray
Package / Case:	64-LQFP
Oscillator Type:	Internal
Operating Temperature:	-40°C ~ 85°C (TA)
Number of I/O:	52
EEPROM Size:	2K x 8
Data Converters:	A/D 16x10b
Core Size:	8-Bit
Core Processor:	STM8A
Connectivity:	I ² C, LIN, SPI, UART/USART

Related products



STM8AF62A6UDX

IC MCU 8BIT 128KB FLASH 32VFQFPN
[STMicroelectronics](#)

[RFQ](#)



STM8AF628ATC

in stock
[ST](#)

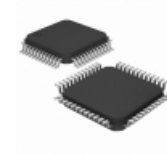
[RFQ](#)



STM8AF62A6UCY

IC MCU 8BIT 128KB FLASH 32VFQFPN
[STMicroelectronics](#)

[RFQ](#)



STM8AF6288TDY

IC MCU 8BIT 64KB FLASH 48LQFP
[STMicroelectronics](#)

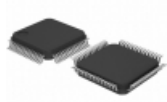
[RFQ](#)



STM8AF628ATCY

IC MCU 8BIT 64KB FLASH 80LQFP
[STMicroelectronics](#)

[RFQ](#)



STM8AF6289TCY

IC MCU 8BIT 64KB FLASH 64LQFP
[STMicroelectronics](#)

[RFQ](#)



STM8AF6288TCY

IC MCU 8BIT 64KB FLASH 48LQFP
[STMicroelectronics](#)

[RFQ](#)



STM8AF6288TDX

IC MCU 8BIT 64KB FLASH 48LQFP
[STMicroelectronics](#)

[RFQ](#)



STM8AF6289TA

[ST](#)

[RFQ](#)

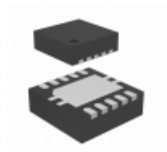


STM8AF6288TD

in stock
[ST](#)

[RFQ](#)

Guess You May Looking For



TPS61150DRCTG4

IC LED DRIVER RGLTR DIM 10VSON
[Texas Instruments](#)

[RFQ](#)



ABP2820CMM-G1

IC DISTRIBUTION SWITCH 8MSOP
[Diodes Incorporated](#)

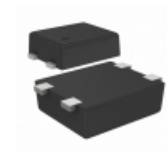
[RFQ](#)



MN13822EP

IC VOLT DETECT 2.2V INV CMOS SMD
[Panasonic Electronic Components](#)

[RFQ](#)



S-1000N35-I4T1U

IC VOLT DETECT N-CH 35V SNT-4A
[SII Semiconductor Corporation](#)

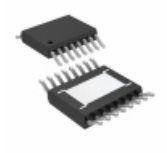
[RFQ](#)



LT1737IGN#PBF

IC REG CTRLR FLYBACK 16SSOP
[Linear Technology](#)

[RFQ](#)



LT3825EFE#PBF

IC REG CTRLR FLYBACK 16TSSOP
[Linear Technology](#)

[RFQ](#)



LT3512MPMS#PBF

IC REG FLYBACK INV ISO 16MSOP
[Linear Technology](#)

[RFQ](#)



LM2681M6X

IC REG SWITCHD CAP RATIO SOT23
[Texas Instruments](#)

[RFQ](#)



AZ1117EH-3.3TRG1

IC REG LDO 3.3V 1A SOT223
[Diodes Incorporated](#)

[RFQ](#)



ADP1710AUJZ-1.2-R7

IC REG LDO 1.2V 0.15A TSOT23-5
[Analog Devices Inc.](#)

[RFQ](#)

