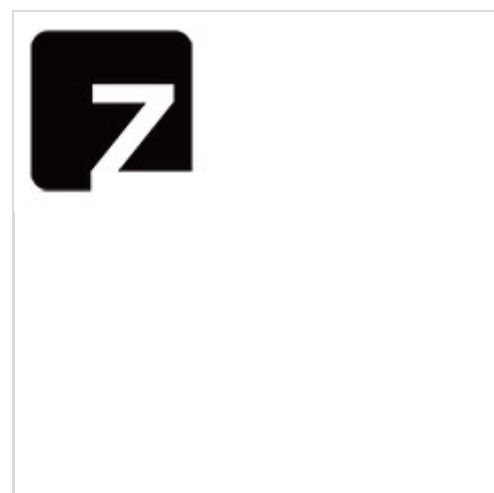


LM5066IPMHE/NOPB


N/A
 IC HOT SWAP CTRLR SMBUS 28TSSOP
 Lead free / RoHS Compliant
 Integrated Circuits (ICs)

Buy Now

Part No. LM5066IPMHE/NOPB Is this a common-used part? : Yes
 Shipped from : HK or Singapore warehouse
 Same model may have multiple batches, images only for reference.
 ECAD Models : Contact us to get
 Email:sales@zeanoit.com

Out Stock
0 pcs
 Minimum:1
 Multiples:1
 Manufacturer lead time 10 weeks

PRICE	
250 pcs	\$7.834
500 pcs	\$7.142
1250 pcs	\$5.76

Shopping Process

1

Confirm the product

2

submit the order

3

payment

4

wait for delivery

5

receive the goods

Specifications

Voltage - Supply:	10 V ~ 80 V
Type:	Hot Swap Controller, Monitor
Supplier Device Package:	28-HTSSOP
Series:	-
Programmable Features:	Auto Retry, Circuit Breaker, Current Limit, Fault Timeout, Latched Fault, OVP, Thermal Limit, UVLO
Packaging:	Tape & Reel (TR)
Package / Case:	28-TSSOP (0.173", 4.40mm Width) Exposed Pad
Operating Temperature:	-40°C ~ 125°C
Number of Channels:	1
Mounting Type:	Surface Mount
Internal Switch(s):	No
Features:	PMBus
Feature Pins:	ADR0, ADR1, ADR2, CL, DIODE, FB, OVLO, PGD, PWR, /RETRY, SCL, SDAI, SDAO, /SMBA, TIMER, UVLO/EN, VAUX, VREF
Current - Supply:	5.6mA
Current - Output (Max):	-
Applications:	General Purpose

Related products


LM5064PMHX/NOPB
 IC HOT SWAP CTRLR SMBUS 28TSSOP
 N/A

RFQ



LM5066PMHE/NOPB
 IC HOT SWAP CTRLR SMBUS 28TSSOP
 N/A

RFQ



LM5064PMHE/NOPB
 IC HOT SWAP CTRLR SMBUS 28TSSOP
 N/A

RFQ



LM5066EVK/NOPB
 BOARD EVAL FOR LM5066
 N/A

RFQ



LM5066IPMHX/NOPB
 IC HOT SWAP CTRLR SMBUS 28TSSOP
 N/A

RFQ



LM5066PMH/NOPB
 IC HOT SWAP CTRLR SMBUS 28TSSOP
 N/A

RFQ



LM5066IPMH
 TI

RFQ



LM5066IEVM-626
 EVAL MODULE FOR LM5066I
 N/A

RFQ



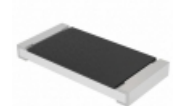
LM5066PMH
 TI

RFQ



LM5066PMHX
 in stock
 N/A

RFQ

Guess You May Looking For


CRCW25123K40FKEGHP
 RES SMD 3.4K OHM 1% 1.5W 2512
 Vishay Dale

RFQ



RT0603WRD0764K9L
 RES SMD 64.9K OHM 1/10W 0603
 Yageo

RFQ



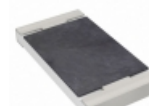
RT0603WRD07698RL
 RES SMD 698 OHM 0.05% 1/10W 0603
 Yageo

RFQ



RT0603WRD0788K7L
 RES SMD 88.7K OHM 1/10W 0603
 Yageo

RFQ



RT2010DKE0711R5L
 RES SMD 11.5 OHM 0.5% 1/2W 2010
 Yageo

RFQ



RT2010DKE07976KL
 RES SMD 976K OHM 0.5% 1/2W 2010
 Yageo

RFQ



RT2010DKE072K2L
 RES SMD 2.2K OHM 0.5% 1/2W 2010
 Yageo

RFQ



RT0805BRB07604KL
 RES SMD 604K OHM 0.1% 1/8W 0805
 Yageo

RFQ



HRG3216P-1692-D-T5
 RES SMD 16.9K OHM 0.5% 1W 1206
 Susumu

RFQ



RG1608P-1911-P-T1
 RES SMD 1.91K OHM 1/10W 0603
 Susumu

RFQ