

## XC6122C536ER-G



**Torex Semiconductor Ltd.**

IC WATCHDOG TIMER 6-USP

Lead free / RoHS Compliant

Integrated Circuits (ICs)

[XC6122C536ER-G.pdf](#)

**Buy Now**

**Out Stock**

**0 pcs**

Minimum:1

Multiples:100

Manufacturer lead time 10 weeks

Images are for reference only.

See Product Specifications for product details.

If you are interested to buy XC6122C536ER-G,Just Email us.

Sales@zeanoit.com

our sales team will reply you within 24 hours

### Shopping Process

**1**

**Confirm the product**

**2**

**submit the order**

**3**

**payment**

**4**

**wait for delivery**

**5**

**receive the goods**

### Specifications

<b>Voltage - Threshold:</b>	3.6V
<b>Type:</b>	Watchdog Circuit
<b>Supplier Device Package:</b>	6-USPC (1.8x2)
<b>Series:</b>	-
<b>Reset Timeout:</b>	400 ms Typical
<b>Reset:</b>	Active Low
<b>Packaging:</b>	Tape & Reel (TR)
<b>Package / Case:</b>	6-UFDNF Exposed Pad
<b>Output:</b>	Open Drain or Open Collector
<b>Operating Temperature:</b>	-40°C ~ 85°C (TA)
<b>Number of Voltages Monitored:</b>	1
<b>Mounting Type:</b>	Surface Mount

### Related products



**XC6122C537ER-G**  
IC WATCHDOG TIMER 6-USP  
[Torex Semiconductor Ltd](#)

RFQ



**XC6122C535MR-G**  
IC WATCHDOG TIMER SOT-25  
[Torex Semiconductor Ltd](#)

RFQ



**XC6122C538MR-G**  
IC WATCHDOG TIMER SOT-25  
[Torex Semiconductor Ltd](#)

RFQ



**XC6122C538ER-G**  
IC WATCHDOG TIMER 6-USP  
[Torex Semiconductor Ltd](#)

RFQ



**XC6122C537MR-G**  
IC WATCHDOG TIMER SOT-25  
[Torex Semiconductor Ltd](#)

RFQ



**XC6122C536MR-G**  
IC WATCHDOG TIMER SOT-25  
[Torex Semiconductor Ltd](#)

RFQ



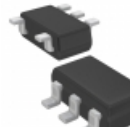
**XC6122C534ER-G**  
IC WATCHDOG TIMER 6-USP  
[Torex Semiconductor Ltd](#)

RFQ



**XC6122C533MR-G**  
IC WATCHDOG TIMER SOT-25  
[Torex Semiconductor Ltd](#)

RFQ



**XC6122C534MR-G**  
IC WATCHDOG TIMER SOT-25  
[Torex Semiconductor Ltd](#)

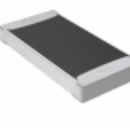
RFQ



**XC6122C535ER-G**  
IC WATCHDOG TIMER 6-USP  
[Torex Semiconductor Ltd](#)

RFQ

### Guess You May Looking For



**TNPW20104K42BEEY**  
RES SMD 4.42K OHM 0.1% 0.4W 2010  
[Vishay Dale](#)

RFQ



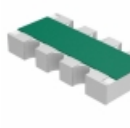
**MCR10ERTF19R6**  
RES SMD 19.6 OHM 1% 1/8W 0805  
[Rohm Semiconductor](#)

RFQ



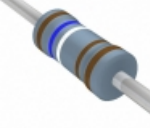
**YC248-FR-0719R1L**  
RES ARRAY 8 RES 19.1 OHM 1606  
[Yageo](#)

RFQ



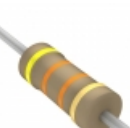
**MNR14E0APJ122**  
RES ARRAY 4 RES 1.2K OHM 1206  
[Rohm Semiconductor](#)

RFQ



**MFR-25FBF52-1K69**  
RES 1.69K OHM 1/4W 1% AXIAL  
[Yageo](#)

RFQ



**PCF14JT43K0**  
RES 43K OHM 1/4W 5% AXIAL  
[Stackpole Electronics Inc.](#)

RFQ



**CF18GT5K60**  
RES 5.6K OHM 1/8W 2% AXIAL  
[Stackpole Electronics Inc.](#)

RFQ



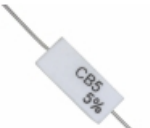
**MK1740FE-R52**  
RES 174 OHM 1/4W 1% AXIAL  
[Ohmite](#)

RFQ



**CMF55255K00FKRE70**  
RES 255K OHM 1/2W 1% AXIAL  
[Vishay Dale](#)

RFQ



**CB7JB1R10**  
RES 1.1 OHM 7W 5% CERAMIC WW  
[Stackpole Electronics Inc.](#)

RFQ