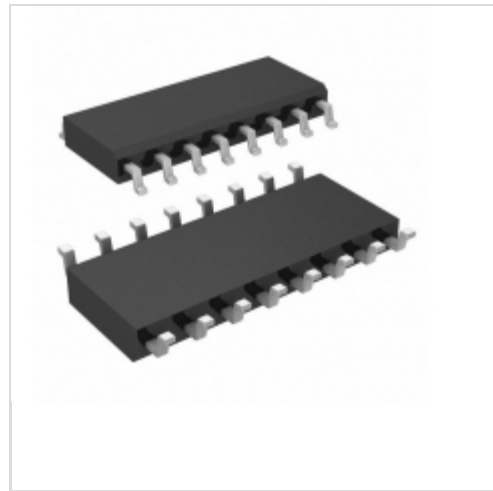


DS1831S+

Maxim Integrated

IC MULTIMON 5V/3.3V 16-SOIC

Lead free / RoHS Compliant

Integrated Circuits (ICs)

1.DS1831S+.pdf

2.DS1831S+.pdf

Buy Now
In Stock
40 pcs

Minimum:1

Multiples:100

Manufacturer lead time 10 weeks

PRICE

1 pcs	\$8.03
10 pcs	\$7.63
25 pcs	\$5.36
50 pcs	\$5.09
100 pcs	\$3.89
250 pcs	\$3.70
1000 pcs	\$3.28

part#DS1831S+ is available, see description of DS1831S+ as below .

use the request quote form to request DS1831S+ price and lead time.

Buy Electronic Components at zeanoit.com .we are an independent distributor of electronic components with extensive inventory in stock.

The price and lead time for DS1831S+ depending on the quantity required, availability and warehouse location.Contact us today and our sales team will send you quotation soon.

Email: sales@zeanoit.com

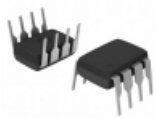
Shopping Process

1
Confirm the product
2
submit the order
3
payment
4
wait for delivery
5
receive the goods

Specifications

Voltage - Threshold:	3.3V, 5V, Adj, Adj
Type:	Multi-Voltage Supervisor
Supplier Device Package:	16-SOIC
Series:	MicroMonitor™
Reset Timeout:	10 ms; 100 ms; 1,000 ms Minimum
Reset:	Active Low
Packaging:	Tube
Package / Case:	16-SOIC (0.154", 3.90mm Width)
Output:	Open Drain or Open Collector
Operating Temperature:	-40°C ~ 85°C (TA)
Number of Voltages Monitored:	4
Mounting Type:	Surface Mount

Related products


DS1832+

 IC MICROMONITOR 3.3V 8-DIP
Maxim Integrated

RFQ


DS1831S

MAXIM

RFQ


DS1831S+T

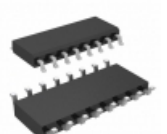
MAXIM

RFQ


DS1831DS+T&R

 IC MULTIMON 3.3/2.5V WDOG 16SOIC
Maxim Integrated

RFQ


DS1831ES

 IC MULTIMON 3.3/2.5V PB 16-SOIC
Maxim Integrated

RFQ


DS1832/TR

DALLAS

RFQ


DS1832

MAXIM

RFQ


DS1831S+T&R

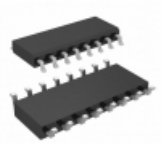
 IC MULTIMON 5V/3.3V 16-SOIC
Maxim Integrated

RFQ


DS1831E

 IC MULTIMON 3.3/2.5V PB 16-DIP
Maxim Integrated

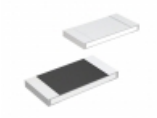
RFQ


DS1831ES/T&R

 IC MULTIMON 3.3/2.5V PB 16-SOIC
Maxim Integrated

RFQ

Guess You May Looking For


MCR18EZHF2000

 RES SMD 200 OHM 1% 1/4W 1206
Rohm Semiconductor

RFQ


RG1005P-104-W-T1

 RES SMD 100KOHM 0.05% 1/16W 0402
Susumu

RFQ


RG1608V-3090-C-T5

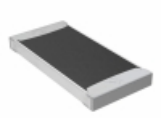
 RES SMD 309 OHM 0.25% 1/10W 0603
Susumu

RFQ


RG3216N-6800-C-T5

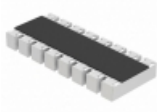
 RES SMD 680 OHM 0.25% 1/4W 1206
Susumu

RFQ


TNPW251288R7BETG

 RES SMD 88.7 OHM 0.1% 1/2W 2512
Vishay Dale

RFQ


EXB-2HV121JV

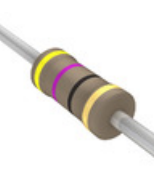
 RES ARRAY 8 RES 120 OHM 1506
Panasonic Electronic Components

RFQ


ERG-1SJ220

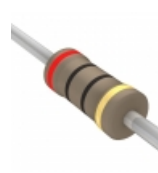
 RES 22 OHM 1W 5% AXIAL
Panasonic Electronic Components

RFQ


CFR-12JR-52-47R

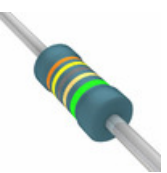
 RES 47 OHM 1/6W 5% AXIAL
Yageo

RFQ


CFR-12JR-52-20R

 RES 20 OHM 1/6W 5% AXIAL
Yageo

RFQ


MBB02070C3489DC100

 RES 34.8 OHM 0.6W 0.5% AXIAL
Vishay BC Components

RFQ