

EYP-1BF133



Panasonic

TCO 250VAC 1A 133C(271F) AXIAL
Contains lead / RoHS non-compliant
Circuit Protection

[EYP-1BF133.pdf](#)

Buy Now

Images are for reference only.

See Product Specifications for product details.

If you are interested to buy EYP-1BF133,Just Email us.

Sales@zeanoit.com

our sales team will reply you within 24 hours

Shopping Process

1

Confirm the product

2

submit the order

3

payment

4

wait for delivery

5

receive the goods

Specifications

Voltage - Rated DC:	50V
Voltage - Rated AC:	250V
Series:	F
Rated Functioning Temperature:	133°C (271°F)
Package / Case:	Axial
Maximum Temperature Limit:	200°C (392°F)
Holding Temperature:	108°C (226°F)
Current Rating:	1A
Approvals:	BEAB, CCC, CSA, PSE, UL, VDE

Related products



EYP-1BF168
TCO 250VAC 1A 168C(334F) AXIAL
[Panasonic Electronic Components](#)

RFQ

Panasonic

EYP-1BF130
TCO 250VAC 1A 130C(266F) AXIAL
[Panasonic Electronic Components](#)

RFQ

Panasonic

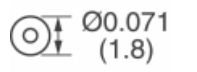
EYP-2BH145
TCO 250VAC 0.5A 145C(293F) RDL
[Panasonic Electronic Components](#)

RFQ



EYP-2BN088
TCO 250VAC 2A 92C(198F) AXIAL
[Panasonic Electronic Components](#)

RFQ



EYP-05BE139
TCO 250VAC 0.5A 139C(282F) AXIAL
[Panasonic Electronic Components](#)

RFQ

Panasonic

EYP-1BF102
TCO 250VAC 1A 102C(216F) AXIAL
[Panasonic Electronic Components](#)

RFQ



EYP-2BN082
TCO 250VAC 2A 86C(187F) AXIAL
[Panasonic Electronic Components](#)

RFQ



EYP-1BF139
TCO 250VAC 1A 139C(282F) AXIAL
[Panasonic Electronic Components](#)

RFQ



EYP-05BE134
TCO 250VAC 0.5A 134C(273F) AXIAL
[Panasonic Electronic Components](#)

RFQ



EYP-1BF115
TCO 250VAC 1A 115C(239F) AXIAL
[Panasonic Electronic Components](#)

RFQ

Guess You May Looking For



SMF7V5A-HE3-18
TVS DIODE 7.5VWM 12.9VC DO-219AB
[Vishay Semiconductor Diodes Division](#)

RFQ



1.5SMC43AT3G
TVS DIODE 36.8VWM 59.3VC SMC
[Littelfuse Inc.](#)

RFQ



1.5SMC10A
TVS DIODE 8.55VWM 14.5VC SMD
[Littelfuse Inc.](#)

RFQ



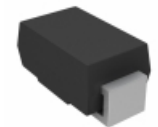
1KSMB56
TVS DIODE 47.8VWM 80.85VC SMD
[Littelfuse Inc.](#)

RFQ



1KSMB12A
TVS DIODE 10.2VWM 16.7VC SMD
[Littelfuse Inc.](#)

RFQ



SMA5J9.0CA-M3/5A
TVS DIODE 9VWM 15.4VC DO-214AC
[Vishay Semiconductor Diodes Division](#)

RFQ



SM15T10A-M3/57T
TVS DIODE 8.55VWM 14.5VC DO-214A
[Vishay Semiconductor Diodes Division](#)

RFQ



SMBG33A-M3/5B
TVS DIODE 33VWM 53.3VC DO-215AA
[Vishay Semiconductor Diodes Division](#)

RFQ



P6SMB110CAHE3/5B
TVS DIODE 94VWM 152VC SMB
[Vishay Semiconductor Diodes Division](#)

RFQ



P6SMB130CAHE3/5B
TVS DIODE 111VWM 179VC SMB
[Vishay Semiconductor Diodes Division](#)

RFQ