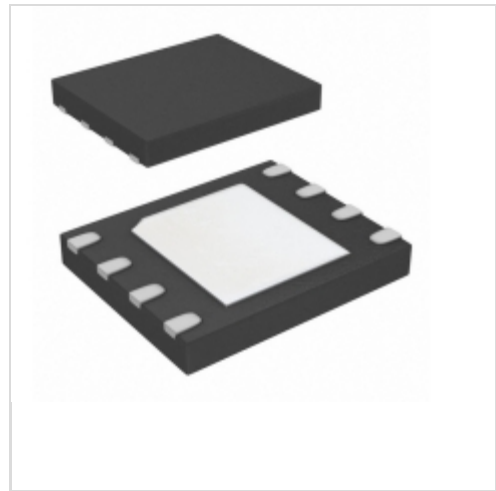


IS25LQ040B-JKLE-TR



ISSI (Integrated Silicon Solution, Inc.)

IC FLASH 4MBIT 104MHZ 8WSON

Lead free / RoHS Compliant

Integrated Circuits (ICs)

[IS25LQ040B-JKLE-TR.pdf](#)

Buy Now

Out Stock

0 pcs

Minimum:1

Multiples:100

Manufacturer lead time 10 weeks

We can supply IS25LQ040B-JKLE-TR, use the request quote form to request IS25LQ040B-JKLE-TR price and lead time. Zeano is a professional electronic components distributor. With 3+ Million line items of available electronic components can ship in short lead-time, over 250 thousand part numbers of electronic components in stock for immediately delivery, which may include part number IS25LQ040B-JKLE-TR. The price and lead time for IS25LQ040B-JKLE-TR depending on the quantity required and warehouse location. Contact us and our sales representative will provide you price. We look forward to work with you.

Shopping Process

1

Confirm the product

2

submit the order

3

payment

4

wait for delivery

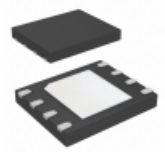
5

receive the goods

Specifications

| | |
|---------------------------------|--------------------|
| Voltage - Supply: | 2.3 V ~ 3.6 V |
| Supplier Device Package: | 8-WSON (6x5) |
| Speed: | 104MHz |
| Series: | - |
| Packaging: | Tape & Reel (TR) |
| Package / Case: | 8-WDFN Exposed Pad |
| Operating Temperature: | -40°C ~ 105°C (TA) |
| Memory Type: | Non-Volatile |
| Memory Size: | 4Mb (512K x 8) |
| Memory Format: | FLASH |
| Interface: | SPI Serial |

Related products



IS25LQ080-JKLE

IC FLASH 8MBIT 104MHZ 8WSON
ISSI, Integrated Silicon Solution Inc

RFQ



IS25LQ040B-JNLE

IC FLASH 4MBIT 104MHZ 8SOIC
ISSI, Integrated Silicon Solution Inc

RFQ



IS25LQ040-JBLE-TR

IC FLASH 4MBIT 104MHZ 8SOIC
ISSI, Integrated Silicon Solution Inc

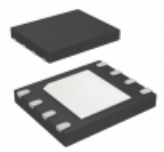
RFQ



IS25LQ080-JNLE

IC FLASH 8MBIT 104MHZ 8SOIC
ISSI, Integrated Silicon Solution Inc

RFQ



IS25LQ040B-JKLE

IC FLASH 4MBIT 104MHZ 8WSON
ISSI, Integrated Silicon Solution Inc

RFQ



IS25LQ040B-JNLE-TR

IC FLASH 4MBIT 104MHZ 8SOIC
ISSI, Integrated Silicon Solution Inc

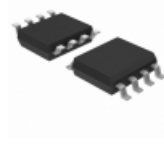
RFQ



IS25LQ040-JBLE

IC FLASH 4MBIT 104MHZ 8SOIC
ISSI, Integrated Silicon Solution Inc

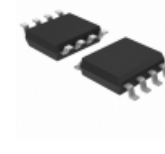
RFQ



IS25LQ040B-JBLE-TR

IC FLASH 4MBIT 104MHZ 8SOIC
ISSI, Integrated Silicon Solution Inc

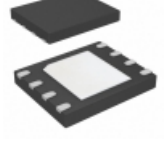
RFQ



IS25LQ040B-JBLE

IC FLASH 4MBIT 104MHZ 8SOIC
ISSI, Integrated Silicon Solution Inc

RFQ

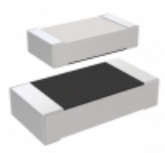


IS25LQ080-JKLE-TR

IC FLASH 8MBIT 104MHZ 8WSON
ISSI, Integrated Silicon Solution Inc

RFQ

Guess You May Looking For



RC3216J330CS

RES SMD 33 OHM 5% 1/4W 1206
Samsung Electro-Mechanics America, Inc.

RFQ



HVCB2010FDD10K0

RES SMD 10K OHM 1% 1W 2010
Stackpole Electronics Inc.

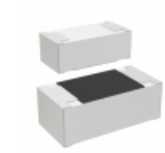
RFQ



RC0201DR-0762RL

RES SMD 62 OHM 0.5% 1/20W 0201
Yageo

RFQ



CR0402-FX-6983GLF

RES SMD 698K OHM 1% 1/16W 0402
Bourns Inc.

RFQ



RT0805FRD073K83L

RES SMD 3.83K OHM 1% 1/8W 0805
Yageo

RFQ



CRCW120682K0JNTA

RES SMD 82K OHM 5% 1/4W 1206
Vishay Dale

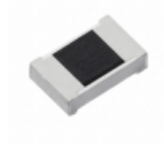
RFQ



RNCF0805DTE1M54

RES SMD 1.54MOHM 0.5% 1/10W 0805
Stackpole Electronics Inc.

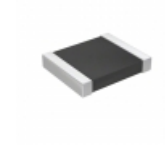
RFQ



ERJ-S03F30R9V

RES SMD 30.9 OHM 1% 1/10W 0603
Panasonic Electronic Components

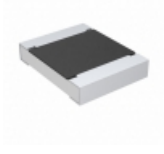
RFQ



AA1210JR-071K2L

RES SMD 1.2K OHM 5% 1/2W 1210
Yageo

RFQ



CRCW12106R04FNNTA

RES SMD 6.04 OHM 1% 1/2W 1210
Vishay Dale

RFQ