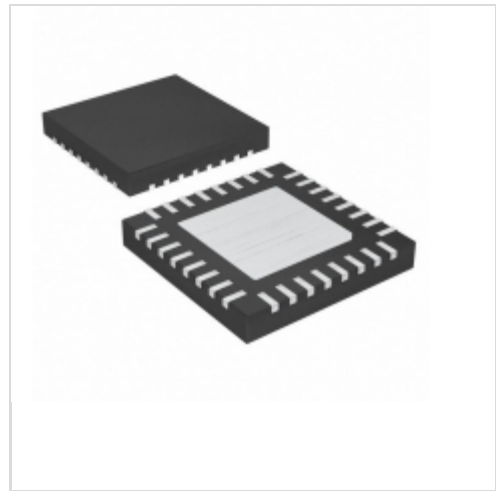


MAX16831ATJ+



Maxim Integrated
IC LED DRIVER CTRLR DIM 32TQFN
Lead free / RoHS Compliant
Integrated Circuits (ICs)

- [1.MAX16831ATJ+.pdf](#)
- [2.MAX16831ATJ+.pdf](#)

Buy Now

Out Stock
0 pcs
Minimum:1
Multiples:100
Manufacturer lead time 10 weeks

We can supply Maxim Integrated MAX16831ATJ+, use the request quote form to request MAX16831ATJ+ price, Maxim Integrated Datasheet PDF and lead time. Zeanoit.com is a professional electronic components distributor. With 3+ Million line items of available electronic components can ship in short lead-time, over 250 thousand part numbers of electronic components in stock for immediately delivery, which may include part number MAX16831ATJ+. The price and lead time for MAX16831ATJ+ depending on the quantity required, availability and warehouse location.

Shopping Process

1

Confirm the product

2

submit the order

3

payment

4

wait for delivery

5

receive the goods

Specifications

Voltage - Supply (Min):	5.5V
Voltage - Supply (Max):	76V
Voltage - Output:	-
Type:	DC DC Controller
Topology:	Step-Down (Buck), Step-Up (Boost)
Supplier Device Package:	32-TQFN-EP (5x5)
Series:	-
Packaging:	Tube
Package / Case:	32-WFQFN Exposed Pad
Operating Temperature:	-40°C ~ 125°C (TA)
Number of Outputs:	1
Mounting Type:	Surface Mount
Internal Switch(s):	No
Frequency:	125kHz ~ 600kHz
Dimming:	Analog, PWM
Current - Output / Channel:	-
Applications:	Automotive, Lighting

Related products



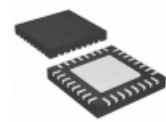
MAX16831EVKIT+
KIT EVAL FOR MAX16831
[Maxim Integrated](#)

RFQ



MAX16831ATJ+T QFN32
[MAXIM](#)

RFQ



MAX16831ATJ/V+T
IC LED DRIVER CTRLR DIM 32TQFN
[Maxim Integrated](#)

RFQ



MAX1682EUK
[MAXIM](#)

RFQ



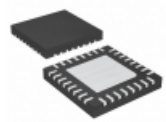
MAX1682EUK+T
[MAXIM](#)

RFQ



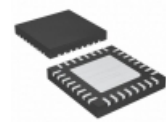
MAX1682EUK+
in stock
[MAXIM](#)

RFQ



MAX16831ATJ/V+
IC LED DRIVER CTRLR DIM 32TQFN
[Maxim Integrated](#)

RFQ



MAX16831ATJ+T
IC LED DRIVER CTRLR DIM 32TQFN
[Maxim Integrated](#)

RFQ



MAX1682EUK-T
IC REG SWITCHD CAP 2VIN SOT23
[Maxim Integrated](#)

RFQ



MAX16831
in stock
[MAXIM](#)

RFQ

Guess You May Looking For



HRG3216P-3832-D-T1
RES SMD 38.3K OHM 0.5% 1W 1206
[Susumu](#)

RFQ



PAT0805E1622BST1
RES SMD 16.2K OHM 0.1% 1/5W 0805
[Vishay Thin Film](#)

RFQ



PAT0805E9760BST1
RES SMD 976 OHM 0.1% 1/5W 0805
[Vishay Thin Film](#)

RFQ



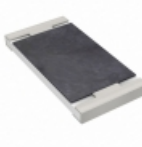
CRT0805-FV-2372ELF
RES SMD 23.7K OHM 1% 1/8W 0805
[Bourns Inc.](#)

RFQ



TNPW08052K32BEEN
RES SMD 2.32K OHM 0.1% 1/8W 0805
[Vishay Dale](#)

RFQ



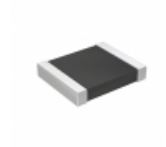
RT2512BKE07536KL
RES SMD 536K OHM 0.1% 3/4W 2512
[Yageo](#)

RFQ



SM2615JT91R0
RES SMD 91 OHM 5% 1W 2615
[Stackpole Electronics Inc.](#)

RFQ



RT1210CRB073K09L
RES SMD 3.09KOHM 0.25% 1/4W 1210
[Yageo](#)

RFQ



RT1206WRD07118RL
RES SMD 118 OHM 0.05% 1/4W 1206
[Yageo](#)

RFQ



RCP1206B820RJTP
RES SMD 820 OHM 5% 11W 1206
[Vishay Dale](#)

RFQ

