

**MC33342D**



[AMI Semiconductor / ON Semiconductor](#)

IC CTRLR BATT FAST CHARGE 8-SOIC

Contains lead / RoHS non-compliant

Integrated Circuits (ICs)

[MC33342D.pdf](#)

**Buy Now**

part#MC33342D is available, see description of MC33342D as below .

use the request quote form to request MC33342D price and lead time.

Buy Electronic Components at zeanoit.com .we are an independent distributor of electronic components with extensive inventory in stock.

The price and lead time for MC33342D depending on the quantity required, availability and warehouse location.Contact us today and our sales team will send you quotation soon.

Email: sales@zeanoit.com

Shopping Process

**1**

Confirm the product

**2**

submit the order

**3**

payment

**4**

wait for delivery

**5**

receive the goods

Specifications

|                                 |                                |
|---------------------------------|--------------------------------|
| <b>Voltage - Supply (Max):</b>  | 18V                            |
| <b>Supplier Device Package:</b> | 8-SOIC                         |
| <b>Series:</b>                  | -                              |
| <b>Programmable Features:</b>   | Timer                          |
| <b>Packaging:</b>               | Tube                           |
| <b>Package / Case:</b>          | 8-SOIC (0.154", 3.90mm Width)  |
| <b>Operating Temperature:</b>   | -25°C ~ 85°C (TA)              |
| <b>Number of Cells:</b>         | -                              |
| <b>Interface:</b>               | -                              |
| <b>Fault Protection:</b>        | Over Temperature, Over Voltage |
| <b>Current - Charging:</b>      | -                              |
| <b>Charge Current - Max:</b>    | -                              |
| <b>Battery Pack Voltage:</b>    | -                              |
| <b>Battery Chemistry:</b>       | Multi-Chemistry                |

Related products



**MC33342DG**  
IC CTRLR BATT FAST CHARGE 8-SOIC  
[ON Semiconductor](#)

RFQ



**MC33341DG**  
IC CTRLR BATTERY PS REG 8-SOIC  
[ON Semiconductor](#)

RFQ



**MC33342DR2G**  
IC CTRLR BATTERY FAST CHRG 8SOIC  
[ON Semiconductor](#)

RFQ



**MC33342PG**  
IC CTRLR BATTERY FAST CHRG 8DIP  
[ON Semiconductor](#)

RFQ



**MC33341PG**  
IC CTRLR BATTERY FAST CHRG 8DIP  
[ON Semiconductor](#)

RFQ



**MC33341DR2**  
IC CTRLR BATTERY FAST CHRG 8SOIC  
[ON Semiconductor](#)

RFQ



**MC33342P**  
IC CTRLR BATTERY FAST CHRG 8DIP  
[ON Semiconductor](#)

RFQ



**MC33342DR2**  
IC CTRLR BATTERY FAST CHRG 8SOIC  
[ON Semiconductor](#)

RFQ



**MC33341P**  
IC CTRLR BATTERY FAST CHRG 8DIP  
[ON Semiconductor](#)

RFQ



**MC33341DR2G**  
IC CTRLR BATTERY FAST CHRG 8SOIC  
[ON Semiconductor](#)

RFQ

Guess You May Looking For



**RT0603WRE077K87L**  
RES SMD 7.87K OHM 1/10W 0603  
[Yageo](#)

RFQ



**AT0603CRD071K91L**  
RES SMD 1.91K OHM 1/10W 0603  
[Yageo](#)

RFQ



**SMM02070C1201FBP00**  
RES SMD 1.2K OHM 1% 1W MELF  
[Vishay Beyschlag](#)

RFQ



**RT0603CRC07270KL**  
RES SMD 270KOHM 0.25% 1/10W 0603  
[Yageo](#)

RFQ



**RNCF2010DTC41R2**  
RES SMD 41.2 OHM 0.5% 1/3W 2010  
[Stackpole Electronics Inc.](#)

RFQ



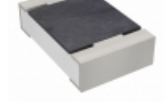
**RNCF2010DTC133R**  
RES SMD 133 OHM 0.5% 1/3W 2010  
[Stackpole Electronics Inc.](#)

RFQ



**RT0603CRC07715RL**  
RES SMD 715 OHM 0.25% 1/10W 0603  
[Yageo](#)

RFQ



**RT0805CRD07169KL**  
RES SMD 169K OHM 0.25% 1/8W 0805  
[Yageo](#)

RFQ



**RNCF2010DTE5K90**  
RES SMD 5.9K OHM 0.5% 1/3W 2010  
[Stackpole Electronics Inc.](#)

RFQ



**RT1206BRD07180KL**  
RES SMD 180K OHM 0.1% 1/4W 1206  
[Yageo](#)

RFQ