

MAX14670EWL+T



Maxim Integrated

IC OVERVOLT PROTECTION WLP
Lead free / RoHS Compliant
Integrated Circuits (ICs)

- 1.MAX14670EWL+T.pdf
- 2.MAX14670EWL+T.pdf

Buy Now

Out Stock

0 pcs

Minimum:1

Multiples:100

Manufacturer lead time 10 weeks

We can supply MAX14670EWL+T, use the request quote form to request MAX14670EWL+T price and lead time. Zeano is a professional electronic components distributor. With 3+ Million line items of available electronic components can ship in short lead-time, over 250 thousand part numbers of electronic components in stock for immediately delivery, which may include part number MAX14670EWL+T. The price and lead time for MAX14670EWL+T depending on the quantity required and warehouse location. Contact us and our sales representative will provide you price. We look forward to work with you.

Shopping Process



Confirm the product



submit the order



payment



wait for delivery

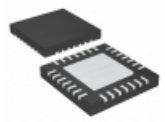


receive the goods

Specifications

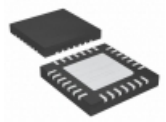
Supplier Device Package:	15-WLP (2.14x1.57)
Series:	-
Packaging:	Tape & Reel (TR)
Package / Case:	15-WFBGA, WLBGA
Operating Temperature:	-40°C ~ 85°C (TA)
Number of Cells:	-
Interface:	-
Function:	Battery Protection
Fault Protection:	Over Temperature, Over Voltage, Reverse Battery
Battery Chemistry:	-

Related products



MAX14662ETI+T
IC SWITCH SSR 1.6V SPST 28TQFN
[Maxim Integrated](#)

RFQ



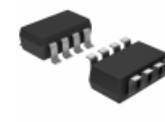
MAX14661ETI+T
IC MULTIPLEXER 16:2 TQFN
[Maxim Integrated](#)

RFQ



MAX14671EWL+T
IC OVERVOLT PROTECTION WLP
[Maxim Integrated](#)

RFQ



MAX14667EKA+T
IC USB HOST ADAPTR EMULATOR SOT
[Maxim Integrated](#)

RFQ



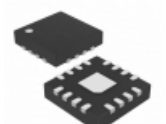
MAX14675AETE+T
IC OVERVOLT PROTECTION TDFN
[Maxim Integrated](#)

RFQ



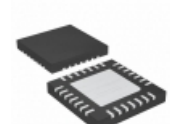
MAX14675AESE+T
IC OVERVOLT PROTECTION
[Maxim Integrated](#)

RFQ



MAX14663ETL+
IC POWER SOLUTION 40TQFN
[Maxim Integrated](#)

RFQ



MAX14662ETI+
IC SWITCH SSR 1.6V SPST 28TQFN
[Maxim Integrated](#)

RFQ



MAX14675CESE
[MAXIM](#)

RFQ



MAX14672ETB+T
[MAXIM](#)

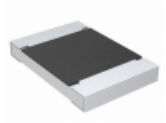
RFQ

Guess You May Looking For



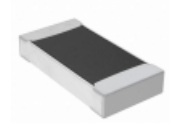
AT0805CRD0716K9L
RES SMD 16.9KOHM 0.25% 1/8W 0805
[Yageo](#)

RFQ



CRCW12182M20JNEK
RES SMD 2.2M OHM 5% 1W 1218
[Vishay Dale](#)

RFQ



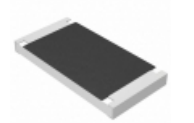
RNCF1206BKE806R
RES SMD 806 OHM 0.1% 1/4W 1206
[Stackpole Electronics Inc.](#)

RFQ



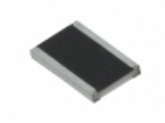
RG2012N-3012-D-T5
RES SMD 30.1K OHM 0.5% 1/8W 0805
[Susumu](#)

RFQ



ERJ-1TNF2402U
RES SMD 24K OHM 1% 1W 2512
[Panasonic Electronic Components](#)

RFQ



RCL121876K8FKEK
RES SMD 76.8K OHM 1W 1812 WIDE
[Vishay Dale](#)

RFQ



RNCF2512DTE28K7
RES SMD 28.7K OHM 0.5% 1/2W 2512
[Stackpole Electronics Inc.](#)

RFQ



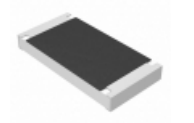
RNCF2512DTE2M15
RES SMD 2.15M OHM 0.5% 1/2W 2512
[Stackpole Electronics Inc.](#)

RFQ



RNCF2512DTE24K0
RES SMD 24K OHM 0.5% 1/2W 2512
[Stackpole Electronics Inc.](#)

RFQ



ERJ-S1DF1004U
RES SMD 1M OHM 1% 3/4W 2010
[Panasonic Electronic Components](#)

RFQ