

**ADP1706ACPZ-0.85R7**

**ADI (Analog Devices, Inc.)**

IC REG LDO 0.85V 1A 8LFCSP

Lead free / RoHS Compliant

Integrated Circuits (ICs)

[ADP1706ACPZ-0.85R7.pdf](#)

Images are for reference only.

See Product Specifications for product details.

If you are interested to buy ADP1706ACPZ-0.85R7, Just Email us.

[Sales@zeanoit.com](mailto:Sales@zeanoit.com)

our sales team will reply you within 24 hours

## Shopping Process

**1**

Confirm the product

**2**

submit the order

**3**

payment

**4**

wait for delivery

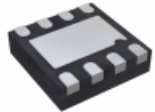
**5**

receive the goods

## Specifications

<b>Voltage - Output:</b>	0.85V
<b>Voltage - Input:</b>	2.5 V ~ 5.5 V
<b>Voltage - Dropout (Typical):</b>	-
<b>Supplier Device Package:</b>	8-LFCSP-WD (3x3)
<b>Series:</b>	-
<b>Regulator Topology:</b>	Positive Fixed
<b>Packaging:</b>	Original-Reel®
<b>Package / Case:</b>	8-WDFDN Exposed Pad, CSP
<b>Operating Temperature:</b>	-40°C ~ 125°C
<b>Number of Regulators:</b>	1
<b>Mounting Type:</b>	Surface Mount
<b>Current - Output:</b>	1A
<b>Current - Limit (Min):</b>	1.1A

## Related products


**ADP1706ACPZ-0.75R7**

IC REG LDO 0.75V 1A 8LFCSP

[Analog Devices Inc.](#)

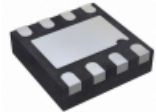
RFQ


**ADP166Z-REDYKIT**

REDYKIT FOR ADP166

[Analog Devices Inc.](#)

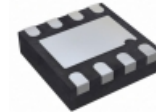
RFQ


**ADP1706ACPZ-0.8-R7**

IC REG LDO 0.8V 1A 8LFCSP

[Analog Devices Inc.](#)

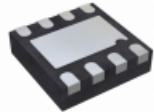
RFQ


**ADP1706ACPZ-1.1-R7**

IC REG LDO 1.1V 1A 8LFCSP

[Analog Devices Inc.](#)

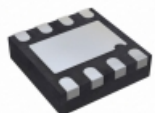
RFQ


**ADP1706ACPZ-1.0-R7**

IC REG LDO 1V 1A 8LFCSP

[Analog Devices Inc.](#)

RFQ


**ADP1706ACPZ-0.95R7**

IC REG LDO 0.95V 1A 8LFCSP

[Analog Devices Inc.](#)

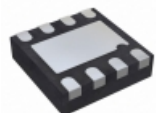
RFQ


**ADP170-1.8-EVALZ**

BOARD EVAL ADP170 1.8V

[Analog Devices Inc.](#)

RFQ


**ADP1706ACPZ-1.05R7**

IC REG LDO 1.05V 1A 8LFCSP

[Analog Devices Inc.](#)

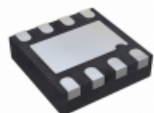
RFQ


**ADP1706-3.3-EVALZ**

BOARD EVAL FOR ADP1706 3.3V

[Analog Devices Inc.](#)

RFQ


**ADP1706ACPZ-0.9-R7**

IC REG LDO 0.9V 1A 8LFCSP

[Analog Devices Inc.](#)

RFQ

## Guess You May Looking For


**VS-25TTS12FPPBF**

SCR PHASE CTRL 1200V 25A TO220FP

[Vishay Semiconductor Diodes Division](#)

RFQ


**ZXTN2011ZTA**

TRANS NPN 100V 4.5A SOT89

[Diodes Incorporated](#)

RFQ


**ELF-16M050A**

COMMON MODE CHOKE 500MA 2LN TH

[Panasonic Electronic Components](#)

RFQ


**PE-0805FB601ST**

FERRITE BEAD 600 OHM 0805 1LN

[Pulse Electronics Corporation](#)

RFQ


**LQH3NPN2R2MMEL**

FIXED IND 2.2UH 2.1A 78 MOHM

[Murata Electronics North America](#)

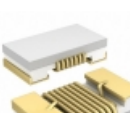
RFQ


**B82111BC20**

FIXED IND 20UH 3A 54 MOHM TH

[EPCOS \(TDK\)](#)

RFQ


**744765082A**

FIXED IND 8.2NH 680MA 100 MOHM

[Würth Electronics Inc.](#)

RFQ

**TAIYO YUDEN**
**HKQ04025N6S-T**

FIXED IND 5.6NH 170MA 690 MOHM

[Taiyo Yuden](#)

RFQ


**SCRH6D38-270**

FIXED IND 27UH 1.2A 109 MOHM SMD

[Signal Transformer](#)

RFQ

**API Delevan**
**1025R-94G**

FIXED IND 100NH 1.38A 80 MOHM TH

[API Delevan Inc.](#)

RFQ