

**HPA01025YZFT**


N/A  
 IC BATT FUEL GAUGE LIION 15DSBGA  
 Lead free / RoHS Compliant  
 Integrated Circuits (ICs)

**Buy Now**

1. Please confirm the Detail which include the part no. and the manufacturer of the products when ordering.
2. If you have bill of material (BOM) list require to quote, you could send to our email.
3. You can email us to change the order details before shipment.
4. Orders cannot be canceled after shipping the packages.

**Shopping Process**

**Confirm the product**

**submit the order**

**payment**

**wait for delivery**

**receive the goods**
**Specifications**

<b>Supplier Device Package:</b>	15-DSBGA
<b>Series:</b>	Impedance Track™
<b>Packaging:</b>	Tape & Reel (TR)
<b>Package / Case:</b>	15-UFBGA, DSBGA
<b>Operating Temperature:</b>	-40°C ~ 85°C (TA)
<b>Number of Cells:</b>	1
<b>Interface:</b>	I <sup>2</sup> C
<b>Function:</b>	Battery Monitor
<b>Fault Protection:</b>	-
<b>Battery Chemistry:</b>	Lithium-Ion

**Related products**


**HPA01077AYFFR**  
 IC BATT MGMT 20DSBGA  
[N/A](#)

RFQ



**HPA01055DRBR**  
 IC SECONDARY-SIDE CTRLR 8SON  
[N/A](#)

RFQ



**HPA01025YZFR**  
 IC BATT FUEL GAUGE LIION 15DSBGA  
[N/A](#)

RFQ



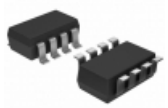
**HPA01054DAPR**  
 IC LED DRIVER LIN DIM 32HTSSOP  
[N/A](#)

RFQ



**HPA00695DRVR**  
[TEXAS](#)

RFQ



**HPA00900AIDCNR**  
 IC CURR/PWR MONITOR 1% SOT23-8  
[N/A](#)

RFQ



**HPA01061DTR-4**  
 IC REG CTRLR BOOST/FLYBACK 8SOIC  
[N/A](#)

RFQ



**HPA00929RTJR**  
[TI](#)

RFQ



**HPA00742DBTR**  
 IC BATT MGMT SBS 20TSSOP  
[N/A](#)

RFQ



**HPA01085DBVR**  
[TI](#)

RFQ

**Guess You May Looking For**


**RNCF0805BKE1M43**  
 RES SMD 1.43MOHM 0.1% 1/10W 0805  
[Stackpole Electronics Inc.](#)

RFQ



**ERA-2HEB6800X**  
 RES SMD 680 OHM 0.1% 1/16W 0402  
[Panasonic Electronic Components](#)

RFQ



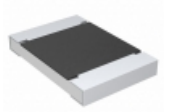
**RG2012N-4530-D-T5**  
 RES SMD 453 OHM 0.5% 1/8W 0805  
[Susumu](#)

RFQ



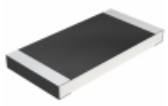
**RNCF2512DTC1M00**  
 RES SMD 1M OHM 0.5% 1/2W 2512  
[Stackpole Electronics Inc.](#)

RFQ



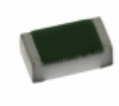
**CRCW1218165RFKEK**  
 RES SMD 165 OHM 1% 1W 1218  
[Vishay Dale](#)

RFQ



**CRCW2512560KFKTG**  
 RES SMD 560K OHM 1% 1W 2512  
[Vishay Dale](#)

RFQ



**TNPW040216K9BEED**  
 RES SMD 16.9KOHM 0.1% 1/16W 0402  
[Vishay Dale](#)

RFQ



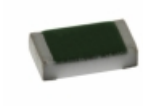
**RG3216P-8203-B-T5**  
 RES SMD 820K OHM 0.1% 1/4W 1206  
[Susumu](#)

RFQ



**RNCF2512DTE6K04**  
 RES SMD 6.04K OHM 0.5% 1/2W 2512  
[Stackpole Electronics Inc.](#)

RFQ



**TNPW0603110RBEEA**  
 RES SMD 110 OHM 0.1% 1/10W 0603  
[Vishay Dale](#)

RFQ