

**NSIC2030BT3G**

[AMI Semiconductor / ON Semiconductor](#)

IC REG/LED DRIVER 30MA SMB

Lead free / RoHS Compliant

Integrated Circuits (ICs)

[NSIC2030BT3G.pdf](#)
**Buy Now**

We can supply AMI Semiconductor / ON Semiconductor NSIC2030BT3G, use the request quote form to request NSIC2030BT3G price, AMI Semiconductor / ON Semiconductor Datasheet PDF and lead time. Zeanoit.com is a professional electronic components distributor. With 3+ Million line items of available electronic components can ship in short lead-time, over 250 thousand part numbers of electronic components in stock for immediately delivery, which may include part number NSIC2030BT3G. The price and lead time for NSIC2030BT3G depending on the quantity required, availability and warehouse location.

## Shopping Process

**1**

Confirm the product

**2**

submit the order

**3**

payment

**4**

wait for delivery

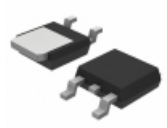
**5**

receive the goods

## Specifications

<b>Voltage - Input:</b>	120V
<b>Supplier Device Package:</b>	SMB
<b>Series:</b>	-
<b>Sensing Method:</b>	High/Low-Side
<b>Packaging:</b>	Tape & Reel (TR)
<b>Package / Case:</b>	DO-214AA, SMB
<b>Operating Temperature:</b>	-55°C ~ 175°C
<b>Mounting Type:</b>	Surface Mount
<b>Function:</b>	Current Regulator
<b>Current - Output:</b>	30mA
<b>Accuracy:</b>	-

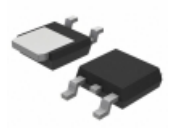
## Related products


**NSI50350ADT4G**

IC REG/LED DRIVER 350MA DPAK

[ON Semiconductor](#)

RFQ


**NSI45090JDT4G**

IC LED DRIVER/REG CCR DPAK

[ON Semiconductor](#)

RFQ


**NSIC2020BT3G**

IC REG/LED DRIVER 20MA SMB

[ON Semiconductor](#)

RFQ


**NSI50010YT1G**

IC REG CCR 50V 10MA SOD123-2

[ON Semiconductor](#)

RFQ


**NSI50350AST3G**

IC REG/LED DRIVER 350MA SMC

[ON Semiconductor](#)

RFQ


**NSIC2050BT3G**

IC REG/LED DRIVER 50MA SMB

[ON Semiconductor](#)

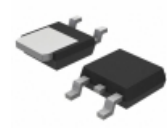
RFQ


**NSIC2030JBT3G**

IC LED DRIVER 30MA 120V 15% SMB2

[ON Semiconductor](#)

RFQ


**NSI50150ADT4G**

IC REG CCR LED DVR 350MA DPAK-3

[ON Semiconductor](#)

RFQ


**NSIC2020JBT3G**

IC REG/LED DRIVER 20MA SUB

[ON Semiconductor](#)

RFQ

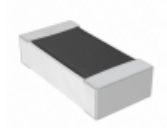

**NSIC2050JBT3G**

IC LED DRIVER 50MA 120V 15% SMB2

[ON Semiconductor](#)

RFQ

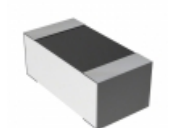
## Guess You May Looking For


**RNCF0603DTT4K99**

RES SMD 4.99KOHM 0.5% 1/10W 0603

[Stackpole Electronics Inc.](#)

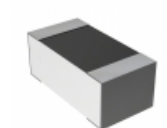
RFQ


**CPF0603B88R7E1**

RES SMD 8.87 OHM 0.1% 1/16W 0603

[TE Connectivity Passive Product](#)

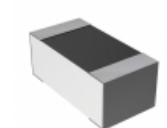
RFQ


**CPF0603B88R7E1**

RES SMD 88.7 OHM 0.1% 1/16W 0603

[TE Connectivity Passive Product](#)

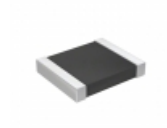
RFQ


**CPF0603B1K47E1**

RES SMD 1.47KOHM 0.1% 1/16W 0603

[TE Connectivity Passive Product](#)

RFQ


**RT1210BRD07191KL**

RES SMD 191K OHM 0.1% 1/4W 1210

[Yageo](#)

RFQ


**AT1206CRD07316KL**

RES SMD 316K OHM 0.25% 1/4W 1206

[Yageo](#)

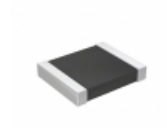
RFQ


**AT1206CRD07681KL**

RES SMD 681K OHM 0.25% 1/4W 1206

[Yageo](#)

RFQ


**RT1210BRD07590RL**

RES SMD 590 OHM 0.1% 1/4W 1210

[Yageo](#)

RFQ


**CPF-A-0603B150RE1**

RES SMD 150 OHM 0.1% 1/16W 0603

[TE Connectivity Passive Product](#)

RFQ


**RVC2010FT261K**

RES SMD 261K OHM 1% 1/2W 2010

[Stackpole Electronics Inc.](#)

RFQ