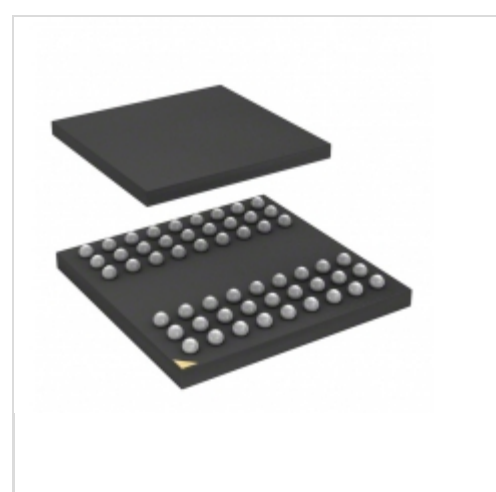


IS42SM16160K-75BLI



ISSI (Integrated Silicon Solution, Inc.)

IC SDRAM 256MBIT 133MHZ 54BGA

Lead free / RoHS Compliant

Integrated Circuits (ICs)

[IS42SM16160K-75BLI.pdf](#)

Buy Now

We can supply IS42SM16160K-75BLI, use the request quote form to request IS42SM16160K-75BLI price and lead time. Zeano is a professional electronic components distributor. With 3+ Million line items of available electronic components can ship in short lead-time, over 250 thousand part numbers of electronic components in stock for immediately delivery, which may include part number IS42SM16160K-75BLI. The price and lead time for IS42SM16160K-75BLI depending on the quantity required and warehouse location. Contact us and our sales representative will provide you price. We look forward to work with you.

Out Stock

0 pcs

Minimum: 1

Multiples: 100

Manufacturer lead time 10 weeks

Shopping Process



Confirm the product



submit the order



payment



wait for delivery



receive the goods

Specifications

Voltage - Supply:	2.7 V ~ 3.6 V
Supplier Device Package:	54-TFBGA (8x8)
Speed:	133MHz
Series:	-
Packaging:	Tray
Package / Case:	54-TFBGA
Operating Temperature:	-40°C ~ 85°C (TA)
Memory Type:	Volatile
Memory Size:	256Mb (16M x 16)
Memory Format:	DRAM
Interface:	Parallel

Related products



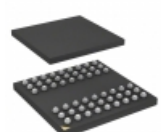
IS42SM16160K-75BLI-TR
IC SDRAM 256MBIT 133MHZ 54BGA
[ISSI, Integrated Silicon Solution Inc](#)

[RFQ](#)



IS42SM16200C-75BLI-TR
IC SDRAM 32MBIT 133MHZ 54BGA
[ISSI, Integrated Silicon Solution Inc](#)

[RFQ](#)



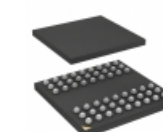
IS42SM16160K-6BLI-TR
IC SDRAM 256MBIT 166MHZ 54BGA
[ISSI, Integrated Silicon Solution Inc](#)

[RFQ](#)



IS42SM16160K-6BLI
IC SDRAM 256MBIT 166MHZ 54BGA
[ISSI, Integrated Silicon Solution Inc](#)

[RFQ](#)



IS42SM16200D-75BLI-TR
IC SDRAM 32MBIT 133MHZ 54BGA
[ISSI, Integrated Silicon Solution Inc](#)

[RFQ](#)



IS42SM16200C-75BLI
IC SDRAM 32MBIT 133MHZ 54BGA
[ISSI, Integrated Silicon Solution Inc](#)

[RFQ](#)



IS42SM16200D-75BLI
IC SDRAM 32MBIT 133MHZ 54BGA
[ISSI, Integrated Silicon Solution Inc](#)

[RFQ](#)



IS42SM16160E-75BLI-TR
IC SDRAM 256MBIT 133MHZ 54BGA
[ISSI, Integrated Silicon Solution Inc](#)

[RFQ](#)



IS42SM16160E-6BLI-TR
IC SDRAM 256MBIT 166MHZ 54BGA
[ISSI, Integrated Silicon Solution Inc](#)

[RFQ](#)



IS42SM16160E-75BLI
IC SDRAM 256MBIT 133MHZ 54BGA
[ISSI, Integrated Silicon Solution Inc](#)

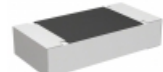
[RFQ](#)

Guess You May Looking For



ERJ-XGNJ184Y
RES SMD 180K OHM 5% 1/32W 01005
[Panasonic Electronic Components](#)

[RFQ](#)



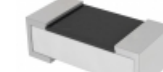
ERA-8AEB1050V
RES SMD 105 OHM 0.1% 1/4W 1206
[Panasonic Electronic Components](#)

[RFQ](#)



CRCW0402560KFKED
RES SMD 560K OHM 1% 1/16W 0402
[Vishay Dale](#)

[RFQ](#)



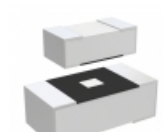
AC0402JR-071M5L
RES SMD 1.5M OHM 5% 1/16W 0402
[Yageo](#)

[RFQ](#)



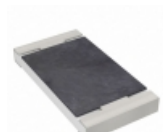
RC0805DR-0711RL
RES SMD 11 OHM 0.5% 1/8W 0805
[Yageo](#)

[RFQ](#)



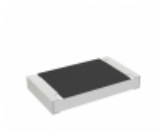
ESR10EZPF6192
RES SMD 61.9K OHM 1% 0.4W 0805
[Rohm Semiconductor](#)

[RFQ](#)



RC2010FK-0793K1L
RES SMD 93.1K OHM 1% 3/4W 2010
[Yageo](#)

[RFQ](#)



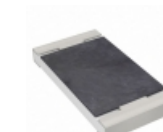
RCS0805215KFKEA
RES SMD 215K OHM 1% 0.4W 0805
[Vishay Dale](#)

[RFQ](#)



RT0402BRD0757R6L
RES SMD 57.6 OHM 0.1% 1/16W 0402
[Yageo](#)

[RFQ](#)



RT2010FKE0790R9L
RES SMD 90.9 OHM 1% 1/2W 2010
[Yageo](#)

[RFQ](#)