

**ISL6608IB-T**



**Intersil**

IC MOSFET DRVR SYNC BUCK 8-SOIC  
Contains lead / RoHS non-compliant  
Integrated Circuits (ICs)

[ISL6608IB-T.pdf](#)

**Buy Now**

Images are for reference only.

See Product Specifications for product details.

If you are interested to buy ISL6608IB-T, Just Email us.

Sales@zeanoit.com

our sales team will reply you within 24 hours

Shopping Process

**1**

Confirm the product

**2**

submit the order

**3**

payment

**4**

wait for delivery

**5**

receive the goods

Specifications

<b>Voltage - Supply:</b>	4.5 V ~ 5.5 V
<b>Supplier Device Package:</b>	8-SOIC
<b>Series:</b>	-
<b>Rise / Fall Time (Typ):</b>	8ns, 8ns
<b>Packaging:</b>	Tape & Reel (TR)
<b>Package / Case:</b>	8-SOIC (0.154", 3.90mm Width)
<b>Operating Temperature:</b>	-40°C ~ 125°C (TJ)
<b>Number of Drivers:</b>	2
<b>Mounting Type:</b>	Surface Mount
<b>Logic Voltage - VIL, VIH:</b>	-
<b>Input Type:</b>	Non-Inverting
<b>High Side Voltage - Max (Bootstrap):</b>	22V
<b>Gate Type:</b>	N-Channel MOSFET
<b>Driven Configuration:</b>	Half-Bridge
<b>Current - Peak Output (Source, Sink):</b>	2A, 2A
<b>Channel Type:</b>	Synchronous

Related products



**ISL6608IRZ**  
IC MOSFET DRVR SYNC BUCK 8-QFN  
[Intersil](#)

RFQ



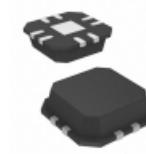
**ISL6608CRZ-T**  
IC MOSFET DRVR SYNC BUCK 8-QFN  
[Intersil](#)

RFQ



**ISL6608IR-T**  
IC MOSFET DRVR SYNC BUCK 8-QFN  
[Intersil](#)

RFQ



**ISL6608CRZ**  
IC MOSFET DRVR SYNC BUCK 8-QFN  
[Intersil](#)

RFQ



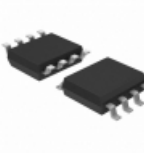
**ISL6608IBZ-T**  
IC MOSFET DRVR SYNC BUCK 8-SOIC  
[Intersil](#)

RFQ



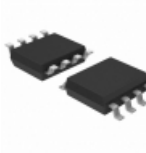
**ISL6608CR-T**  
IC MOSFET DRVR SYNC BUCK 8-QFN  
[Intersil](#)

RFQ



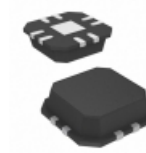
**ISL6608IBZ**  
IC MOSFET DRVR SYNC BUCK 8-SOIC  
[Intersil](#)

RFQ



**ISL6608IB**  
IC DRIVER MOSFET DUAL SYNC 8SOIC  
[Intersil](#)

RFQ



**ISL6608CR**  
IC MOSFET DRVR SYNC BUCK 8-QFN  
[Intersil](#)

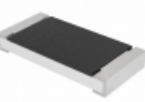
RFQ



**ISL6608IR**  
IC MOSFET DRVR SYNC BUCK 8-QFN  
[Intersil](#)

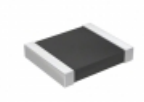
RFQ

Guess You May Looking For



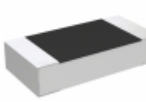
**CRCW20103R90FKEFHP**  
RES SMD 3.9 OHM 1% 1W 2010  
[Vishay Dale](#)

RFQ



**RT1210CRE0715RL**  
RES SMD 15 OHM 0.25% 1/4W 1210  
[Yageo](#)

RFQ



**CPF1206B23R7E1**  
RES SMD 23.7 OHM 0.1% 1/8W 1206  
[TE Connectivity Passive Product](#)

RFQ



**RNCF1210BTE18K2**  
RES SMD 18.2K OHM 0.1% 1/3W 1210  
[Stackpole Electronics Inc.](#)

RFQ



**RG1608N-1693-B-T5**  
RES SMD 169K OHM 0.1% 1/10W 0603  
[Susumu](#)

RFQ



**PT2512JK-7W0R68L**  
RES SMD 0.68 OHM 5% 2W 2512  
[Yageo](#)

RFQ



**RT0805WRE07475RL**  
RES SMD 475 OHM 0.05% 1/8W 0805  
[Yageo](#)

RFQ



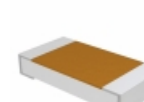
**RNCF2512BTE1M47**  
RES SMD 1.47M OHM 0.1% 1/2W 2512  
[Stackpole Electronics Inc.](#)

RFQ



**RT0805WRD07200KL**  
RES SMD 200K OHM 0.05% 1/8W 0805  
[Yageo](#)

RFQ



**TNPW12062K37BETA**  
RES SMD 2.37K OHM 0.1% 1/4W 1206  
[Vishay Dale](#)

RFQ