

STK5C4U332J-E



[AMI Semiconductor / ON Semiconductor](#)

MODULE HYBRID INVERTER 3PHASE

Lead free / RoHS Compliant

Integrated Circuits (ICs)

[STK5C4U332J-E.pdf](#)

Buy Now

We can supply AMI Semiconductor / ON Semiconductor STK5C4U332J-E, use the request quote form to request STK5C4U332J-E price, AMI Semiconductor / ON Semiconductor Datasheet PDF and lead time. Zeanoit.com is a professional electronic components distributor. With 3+ Million line items of available electronic components can ship in short lead-time, over 250 thousand part numbers of electronic components in stock for immediately delivery, which may include part number STK5C4U332J-E. The price and lead time for STK5C4U332J-E depending on the quantity required, availability and warehouse location.

Out Stock

0 pcs

Minimum:1

Multiples:100

Manufacturer lead time 10 weeks

Shopping Process

1

Confirm the product

2

submit the order

3

payment

4

wait for delivery

5

receive the goods

Specifications

Voltage - Supply:	12.5 V ~ 17.5 V
Voltage - Load:	450V (Max)
Technology:	IGBT
Supplier Device Package:	38-SDIP Hybrid Module
Series:	-
Rds On (Typ):	-
Packaging:	Tube
Package / Case:	38-SDIP Module, 24 Leads, Formed
Output Configuration:	Half Bridge (3)
Operating Temperature:	-40°C ~ 150°C (TJ)
Mounting Type:	Through Hole
Load Type:	Inductive
Interface:	Logic
Features:	Status Flag
Fault Protection:	Current Limiting, UVLO
Current - Peak Output:	6A
Current - Output / Channel:	3A
Applications:	AC Motors

Related products



STK5C4U332JGEVB
EVAL BOARD STK5C4U332JG
[ON Semiconductor](#)

RFQ



STK5C4-340J
[SANYO](#)

RFQ



STK5D4-361D-E
IC MOTOR DRIVER
[ON Semiconductor](#)

RFQ



STK5C4U341J-E
MODULE HYBRID INVERTER 3PHASE
[ON Semiconductor](#)

RFQ



STK5C4-330J1-1-E
IC MOTOR DRIVER
[ON Semiconductor](#)

RFQ



STK5C4U341J
[SANYO](#)

RFQ



STK5C4-330J1-E
IC MOTOR DRIVER
[ON Semiconductor](#)

RFQ



STK5C4-340J-E
MODULE HYBRID INVERTER 3PHASE
[ON Semiconductor](#)

RFQ



STK5C4U331J-E
MODULE HYBRID INVERTER 3PHASE
[ON Semiconductor](#)

RFQ



STK5D4-360D-E
IC MOTOR DRIVER
[ON Semiconductor](#)

RFQ

Guess You May Looking For



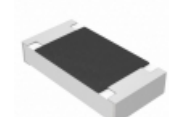
RNCF2010BTC100R
RES SMD 100 OHM 0.1% 1/3W 2010
[Stackpole Electronics Inc.](#)

RFQ



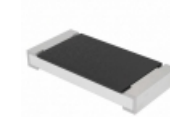
CSRN2512JK11L0
RES SMD 0.011 OHM 5% 2W 2512
[Stackpole Electronics Inc.](#)

RFQ



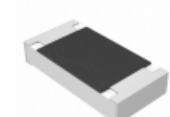
PE1206DRF070R015L
RES SMD 0.015 OHM 0.5% 1/4W 1206
[Yageo](#)

RFQ



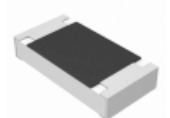
CRCW2010180RFKEFHP
RES SMD 180 OHM 1% 1W 2010
[Vishay Dale](#)

RFQ



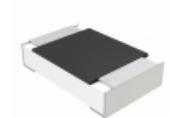
PE1206FRM7W0R025L
RES SMD 0.025 OHM 1% 1/2W 1206
[Yageo](#)

RFQ



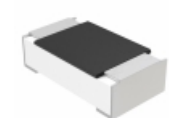
PE1206DRF070R02L
RES SMD 0.02 OHM 0.5% 1/4W 1206
[Yageo](#)

RFQ



MCU08050D1622BP500
RES SMD 16.2K OHM 0.1% 1/8W 0805
[Vishay Beyschlag](#)

RFQ



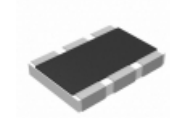
MCT06030D2321BP500
RES SMD 2.32KOHM 0.1% 1/10W 0603
[Vishay Beyschlag](#)

RFQ



RNCF1210DTE1K05
RES SMD 1.05K OHM 0.5% 1/3W 1210
[Stackpole Electronics Inc.](#)

RFQ



AA1218FK-07665RL
RES SMD 665 OHM 1W 1812 WIDE
[Yageo](#)

RFQ

