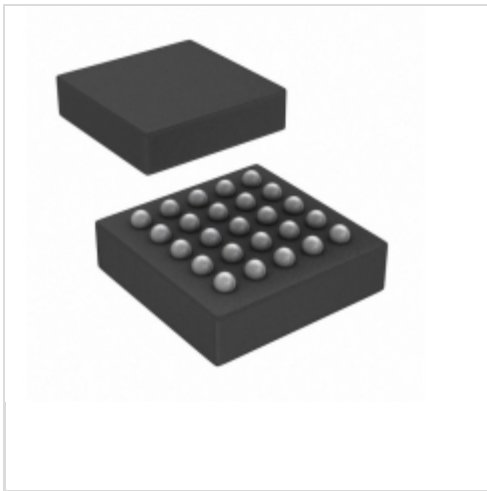


## STCF04TBR



[STMicroelectronics](#)

IC LED DRIVER RGLTR 1.5A 25TFBGA

Lead free / RoHS Compliant

Integrated Circuits (ICs)

[STCF04TBR.pdf](#)

[Buy Now](#)

We can supply STMicroelectronics STCF04TBR, use the request quote form to request STCF04TBR price, STMicroelectronics Datasheet PDF and lead time. Zeanoit.com is a professional electronic components distributor. With 3+ Million line items of available electronic components can ship in short lead-time, over 250 thousand part numbers of electronic components in stock for immediately delivery, which may include part number STCF04TBR. The price and lead time for STCF04TBR depending on the quantity required, availability and warehouse location.

**Out Stock**

**0 pcs**

Minimum:1

Multiples:100

Manufacturer lead time 10 weeks

### Shopping Process

**1**

Confirm the product

**2**

submit the order

**3**

payment

**4**

wait for delivery

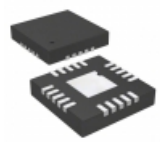
**5**

receive the goods

### Specifications

<b>Voltage - Supply (Min):</b>	2.5V
<b>Voltage - Supply (Max):</b>	5.5V
<b>Voltage - Output:</b>	4.5 V ~ 5.5 V
<b>Type:</b>	DC DC Regulator
<b>Topology:</b>	Step-Down (Buck), Step-Up (Boost)
<b>Supplier Device Package:</b>	25-TFBGA (3x3)
<b>Series:</b>	SuperCap™
<b>Packaging:</b>	Tape & Reel (TR)
<b>Package / Case:</b>	25-TFBGA
<b>Operating Temperature:</b>	-40°C ~ 85°C (TA)
<b>Number of Outputs:</b>	1
<b>Mounting Type:</b>	Surface Mount
<b>Internal Switch(s):</b>	Yes
<b>Frequency:</b>	1.8MHz
<b>Dimming:</b>	-
<b>Current - Output / Channel:</b>	1.5A (Switch)
<b>Applications:</b>	Camera Flash

### Related products

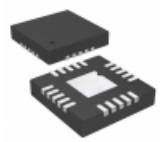


**STCF02PNR**

IC LED DRIVER RGLTR 600MA 20QFN

[STMicroelectronics](#)

RFQ

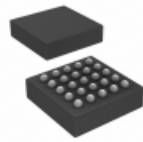


**STCF03PNR**

IC LED DRIVER RGLTR DIM 20QFN

[STMicroelectronics](#)

RFQ

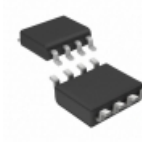


**STCF03ITBR**

IC LED DRIVER RGLTR DIM 25TFBGA

[STMicroelectronics](#)

RFQ



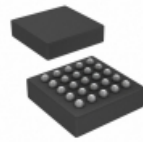
**STCH02TR**

OFFLINE PWM QUASI RESONANT

CONTR

[STMicroelectronics](#)

RFQ

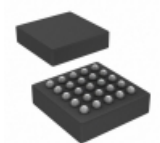


**STCF03TBR**

IC LED DRIVER RGLTR DIM 25TFBGA

[STMicroelectronics](#)

RFQ

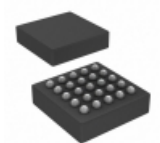


**STCF05TBR**

IC LED DRVR RGLTR 400MA 25TFBGA

[STMicroelectronics](#)

RFQ



**STCF06TBR**

IC LED DRIVER RGLTR DIM 25TFBGA

[STMicroelectronics](#)

RFQ

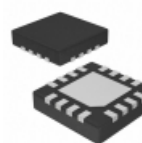


**STCL1100YBFCWY5**

IC OSC SILICON 10MHZ SOT23-5

[STMicroelectronics](#)

RFQ



**STCF07PNR**

IC LED DRIVER REGULATOR 1A 16QFN

[STMicroelectronics](#)

RFQ



**STCF03PMR**

[ST](#)

RFQ

### Guess You May Looking For

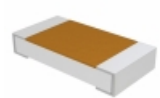
**Panasonic**

**ERJ-L1WUF71MU**

RES SMD 0.071 OHM 1% 1W 2512

[Panasonic Electronic Components](#)

RFQ



**TNPW12061K58BEEN**

RES SMD 1.58K OHM 0.1% 1/4W 1206

[Vishay Dale](#)

RFQ

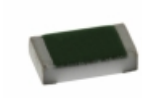


**RG2012N-2551-W-T1**

RES SMD 2.55KOHM 0.05% 1/8W 0805

[Susumu](#)

RFQ

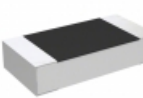


**TNPW0603237KBEEN**

RES SMD 237K OHM 0.1% 1/10W 0603

[Vishay Dale](#)

RFQ

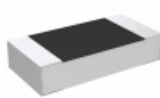


**RP73D2B18R2BTDF**

RES SMD 18.2 OHM 0.1% 1/4W 1206

[TE Connectivity Passive Product](#)

RFQ



**RP73D2B169RBTDF**

RES SMD 169 OHM 0.1% 1/4W 1206

[TE Connectivity Passive Product](#)

RFQ



**HRG3216P-1201-B-T5**

RES SMD 1.2K OHM 0.1% 1W 1206

[Susumu](#)

RFQ

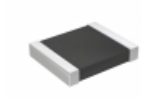


**RT0603WRB073K09L**

RES SMD 3.09K OHM 1/10W 0603

[Yageo](#)

RFQ



**RT1210WRB07511RL**

RES SMD 511 OHM 0.05% 1/4W 1210

[Yageo](#)

RFQ



**PTN1206E5231BST1**

RES SMD 5.23K OHM 0.1% 0.4W 1206

[Vishay Thin Film](#)

RFQ

