

## ADM7154ACPZ-2.5-R7



**ADI (Analog Devices, Inc.)**

IC REG LDO 2.5V 0.6A 8LFCSP

Lead free / RoHS Compliant

Integrated Circuits (ICs)

[ADM7154ACPZ-2.5-R7.pdf](#)

**Buy Now**

**Out Stock**

**0 pcs**

Minimum:1

Multiples:100

Manufacturer lead time 10 weeks

We can supply ADI (Analog Devices, Inc.) ADM7154ACPZ-2.5-R7, use the request quote form to request ADM7154ACPZ-2.5-R7 price, ADI (Analog Devices, Inc.) Datasheet PDF and lead time. Zeano.com is a professional electronic components distributor. With 3+ Million line items of available electronic components can ship in short lead-time, over 250 thousand part numbers of electronic components in stock for immediately delivery, which may include part number ADM7154ACPZ-2.5-R7. The price and lead time for ADM7154ACPZ-2.5-R7 depending on the quantity required, availability and warehouse location.

### Shopping Process

**1**

**Confirm the product**

**2**

**submit the order**

**3**

**payment**

**4**

**wait for delivery**

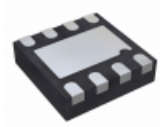
**5**

**receive the goods**

### Specifications

<b>Voltage - Output:</b>	2.5V
<b>Voltage - Input:</b>	Up to 5.5V
<b>Voltage - Dropout (Typical):</b>	-
<b>Supplier Device Package:</b>	8-LFCSP-WD (3x3)
<b>Series:</b>	-
<b>Regulator Topology:</b>	Positive Fixed
<b>Packaging:</b>	Tape & Reel (TR)
<b>Package / Case:</b>	8-WDFDN Exposed Pad, CSP
<b>Operating Temperature:</b>	-40°C ~ 125°C
<b>Number of Regulators:</b>	1
<b>Mounting Type:</b>	Surface Mount
<b>Current - Output:</b>	600mA
<b>Current - Limit (Min):</b>	700mA

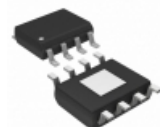
### Related products



**ADM7154ACPZ-3.0-R7**

IC REG LDO 3V 0.6A 8LFCSP  
[Analog Devices Inc.](#)

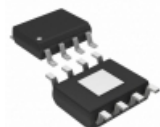
RFQ



**ADM7154ARDZ-1.8-R7**

IC REG LDO 1.8V 0.6A 8SOIC  
[Analog Devices Inc.](#)

RFQ



**ADM7151ARDZ-04**

IC REG LDO ADJ 0.8A 8SOIC  
[Analog Devices Inc.](#)

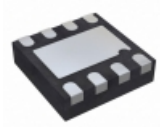
RFQ



**ADM7151CP-02-EVALZ**

EVAL BOARD LDO REG 800MA ADM7151  
[Analog Devices Inc.](#)

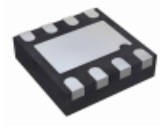
RFQ



**ADM7154ACPZ-1.2-R7**

IC REG LDO 1.2V 0.6A 8LFCSP  
[Analog Devices Inc.](#)

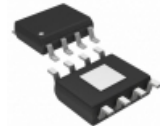
RFQ



**ADM7154ACPZ-2.8-R7**

IC REG LDO 2.8V 0.6A 8LFCSP  
[Analog Devices Inc.](#)

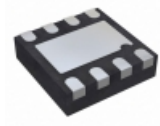
RFQ



**ADM7154ARDZ-1.2-R7**

IC REG LDO 1.2V 0.6A 8SOIC  
[Analog Devices Inc.](#)

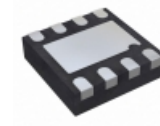
RFQ



**ADM7154ACPZ-1.8-R7**

IC REG LDO 1.8V 0.6A 8LFCSP  
[Analog Devices Inc.](#)

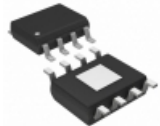
RFQ



**ADM7154ACPZ-3.3-R7**

IC REG LDO 3.3V 0.6A 8LFCSP  
[Analog Devices Inc.](#)

RFQ



**ADM7151ARDZ-04-R7**

IC REG LDO ADJ 0.8A 8SOIC  
[Analog Devices Inc.](#)

RFQ

### Guess You May Looking For



**SIT8208AI-82-25S-50.000000T**

-40 TO 85C, 7050, 25PPM, 2.5V, 5  
[SITIME](#)

RFQ



**SIT8209AI-8F-25S-133.330000Y**

-40 TO 85C, 7050, 10PPM, 2.5V, 1  
[SITIME](#)

RFQ



**G2SBA20-E3/51**

DIODE GPP 1.5A 200V GBL  
[Vishay Semiconductor Diodes Division](#)

RFQ



**PLH10AN2911R2P2B**

COMMON MODE CHOKE 1.2A 2LN TH  
[Murata Electronics North America](#)

RFQ



**2425-003-X7U0-100AA**

CAP FEEDTHRU 10PF 100V  
[Tusonix a Subsidiary of CTS Electronic Components](#)

RFQ



**B84143B90R112**

LINE FILTER 520/300VAC 90A CHASS  
[EPCOS \(TDK\)](#)

RFQ



**7443340470**

FIXED IND 4.7UH 7.5A 12.4 MOHM  
[Würth Electronics Inc.](#)

RFQ



**2115-H-RC**

FIXED IND 180UH 2.6A 110 MOHM TH  
[Bourns Inc.](#)

RFQ



**P0250.222NLT**

FIXED IND 2.2UH 7.1A 14 MOHM SMD  
[Pulse Electronics Corporation](#)

RFQ



**1840R-07K**

FIXED IND 560NH 1.67A 100 MOHM  
[API Delevan Inc.](#)

RFQ