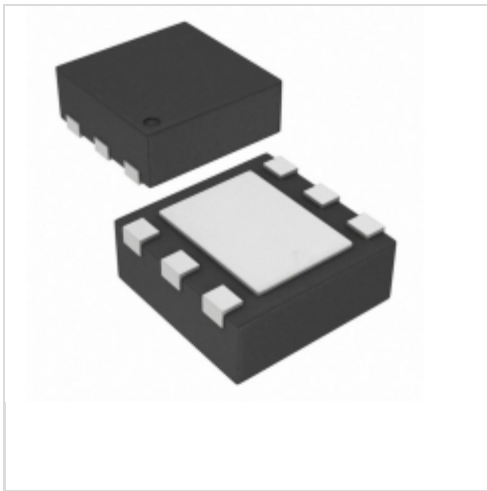


TPS2552DRVT-1



N/A
 IC PWR DIST SWITCH ADJ 6SON
 Lead free / RoHS Compliant
 Integrated Circuits (ICs)

[Buy Now](#)

In Stock
500 pcs
 Minimum:1
 Multiples:1
 Manufacturer lead time 10 weeks

PRICE	
250 pcs	\$1.466
500 pcs	\$1.283
1250 pcs	\$1.063

- 1.Please confirm the Detail which include the part no.and the manufacturer of the products when ordering.
- 2.If you have bill of material(BOM) list require to quote.you could send to our email.
- 3.You can email us to change the order details before shipment.
- 4.Orders cannot be canceled after shipping the packages.

Shopping Process

1

Confirm the product

2

submit the order

3

payment

4

wait for delivery

5

receive the goods

Specifications

Voltage - Supply (Vcc/Vdd):	Not Required
Voltage - Load:	2.5 V ~ 6.5 V
Switch Type:	General Purpose
Supplier Device Package:	6-SON (2x2)
Series:	-
Rds On (Typ):	100 mOhm
Ratio - Input:Output:	1:1
Packaging:	Tape & Reel (TR)
Package / Case:	6-WDFN Exposed Pad
Output Type:	N-Channel
Output Configuration:	High Side
Operating Temperature:	-40°C ~ 150°C (TJ)
Number of Outputs:	1
Interface:	On/Off
Input Type:	Non-Inverting
Features:	Slew Rate Controlled, Status Flag
Fault Protection:	Current Limiting (Adjustable), Over Temperature, UVLO
Current - Output (Max):	1.5A

Related products



TPS2552DRV1EVM-364
 EVAL MODULE FOR TPS2552DRV1-364
[N/A](#)

RFQ



TPS2552DRVR-1
 IC PWR DIST SWITCH ADJ 6SON
[N/A](#)

RFQ



TPS2553DBVRG4
 in stock
[N/A](#)

RFQ



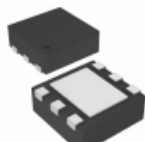
TPS2553DBVR-1
 IC PWR DIST SWITCH ADJ SOT23-6
[N/A](#)

RFQ



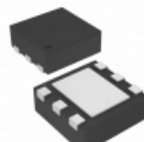
TPS2553DBVR
 IC PWR DIST SWITCH ADJ SOT23-6
[N/A](#)

RFQ



TPS2552DRVT
 IC PWR DIST SWITCH ADJ 6SON
[N/A](#)

RFQ



TPS2552DRVR
 IC PWR DIST SWITCH ADJ 6SON
[N/A](#)

RFQ



TPS2553DBVEVM-364
 EVAL MODULE FOR TPS2553DBV-364
[N/A](#)

RFQ



TPS2553DBV1EVM-364
 EVAL MODULE FOR TPS2553DBV1-364
[N/A](#)

RFQ



TPS2552DRVEVM-364
 EVAL MODULE FOR TPS2552DRV-364
[N/A](#)

RFQ

Guess You May Looking For



RG3216V-1581-P-T1
 RES SMD 1.58KOHM 0.02% 1/4W 1206
[Susumu](#)

RFQ



RCP0505B1K20GS2
 RES SMD 1.2K OHM 2% 5W 0505
[Vishay Dale](#)

RFQ



RCP2512W910RGS2
 RES SMD 910 OHM 2% 22W 2512
[Vishay Dale](#)

RFQ



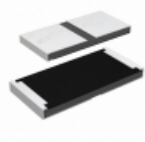
M55342H04B437BRT5
 RES SMD 437K OHM 0.1% 0.15W 1050
[Vishay Dale](#)

RFQ



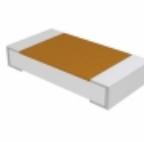
RCP0603B56R0GWB
 RES SMD 56 OHM 2% 3.9W 0603
[Vishay Dale](#)

RFQ



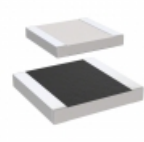
RCP2512W18R0GET
 RES SMD 18 OHM 2% 22W 2512
[Vishay Dale](#)

RFQ



D55342E07B1E65RWS
 RES SMD 1.65K OHM 1% 1/4W 1206
[Vishay Dale](#)

RFQ



M55342E10B6B34RWS
 RES SMD 6.34K OHM 0.1% 1/2W 1010
[Vishay Dale](#)

RFQ



M55342H02B10E7PWS
 RES SMD 10.7K OHM 1% 1/8W 0505
[Vishay Dale](#)

RFQ



M55342K02B14B7RWS
 RES SMD 14.7K OHM 0.1% 1/8W 0505
[Vishay Dale](#)

RFQ

