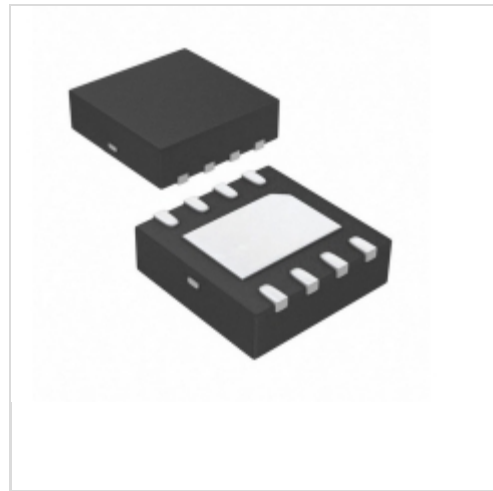


## FAN3226CMPX



Fairchild/ON Semiconductor

IC GATE DVR DUAL 2A 8-MLP

Lead free / RoHS Compliant

Integrated Circuits (ICs)

[FAN3226CMPX.pdf](#)

**Buy Now**

**Out Stock**

**0 pcs**

Minimum:1

Multiples:100

Manufacturer lead time 10 weeks

### PRICE

|           |         |
|-----------|---------|
| 3000 pcs  | \$0.601 |
| 6000 pcs  | \$0.571 |
| 15000 pcs | \$0.549 |

part#FAN3226CMPX is available, see description of FAN3226CMPX as below .

use the request quote form to request FAN3226CMPX price and lead time.

Buy Electronic Components at zeanoit.com .we are an independent distributor of electronic components with extensive inventory in stock.

The price and lead time for FAN3226CMPX depending on the quantity required, availability and warehouse location.Contact us today and our sales team will send you quotation soon.

Email: sales@zeanoit.com

## Shopping Process

**1**

Confirm the product

**2**

submit the order

**3**

payment

**4**

wait for delivery

**5**

receive the goods

## Specifications

|  |                    |
|--|--------------------|
| <b>Voltage - Supply:</b>                     | 4.5 V ~ 18 V       |
| <b>Supplier Device Package:</b>              | 8-MLP (3x3)        |
| <b>Series:</b>                               | -                  |
| <b>Rise / Fall Time (Typ):</b>               | 12ns, 9ns          |
| <b>Packaging:</b>                            | Tape & Reel (TR)   |
| <b>Package / Case:</b>                       | 8-WDFN Exposed Pad |
| <b>Operating Temperature:</b>                | -40°C ~ 125°C (TJ) |
| <b>Number of Drivers:</b>                    | 2                  |
| <b>Mounting Type:</b>                        | Surface Mount      |
| <b>Logic Voltage - VIL, VIH:</b>             | -                  |
| <b>Input Type:</b>                           | Inverting          |
| <b>Gate Type:</b>                            | N-Channel MOSFET   |
| <b>Driven Configuration:</b>                 | Low-Side           |
| <b>Current - Peak Output (Source, Sink):</b> | 3A, 3A             |
| <b>Channel Type:</b>                         | Independent        |

## Related products



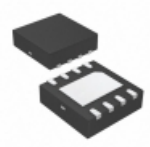
**FAN3226CMX**  
IC GATE DVR DUAL 2A 8-SOIC  
[Fairchild/ON Semiconductor](#)

RFQ



**FAN3225CMX\_F085**  
IC GATE DVR DUAL 4A 8-SOIC  
[Fairchild/ON Semiconductor](#)

RFQ



**FAN3225TMPX**  
IC GATE DVR LOW DUAL 4A HS 8MLP  
[Fairchild/ON Semiconductor](#)

RFQ



**FAN3225TMX\_F085**  
IC GATE DRIVER DUAL 4A 8SOIC  
[Fairchild/ON Semiconductor](#)

RFQ



**FAN3226TMX**  
IC GATE DVR LOSIDE DUAL 2A 8SOIC  
[Fairchild/ON Semiconductor](#)

RFQ



**FAN3225TMX**  
IC GATE DRIVER DUAL 4A 8SOIC  
[Fairchild/ON Semiconductor](#)

RFQ



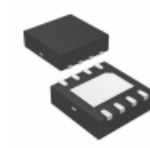
**FAN3226CMX\_F085**  
IC GATE DVR DUAL 2A 8SOIC  
[Fairchild/ON Semiconductor](#)

RFQ



**FAN3225CMX**  
IC GATE DVR DUAL 4A 8-SOIC  
[Fairchild/ON Semiconductor](#)

RFQ



**FAN3226TMPX**  
IC GATE DVR DUAL 2A 8-MLP  
[Fairchild/ON Semiconductor](#)

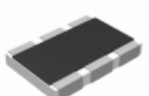
RFQ



**FAN3226T**  
[FAIRCHILD](#)

RFQ

## Guess You May Looking For



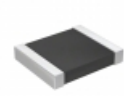
**AA1218FK-0714R3L**  
RES SMD 14.3 OHM 1W 1812 WIDE  
[Yageo](#)

RFQ



**CSRN2010JK10L0**  
RES SMD 0.01 OHM 5% 1W 2010  
[Stackpole Electronics Inc.](#)

RFQ



**RT1210CRE07332KL**  
RES SMD 332K OHM 0.25% 1/4W 1210  
[Yageo](#)

RFQ



**RNCF2010BTE1M87**  
RES SMD 1.87M OHM 0.1% 1/4W 2010  
[Stackpole Electronics Inc.](#)

RFQ



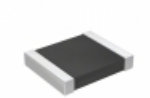
**RG1608P-3401-W-T5**  
RES SMD 3.4KOHM 0.05% 1/10W 0603  
[Susumu](#)

RFQ



**RCL1225160RJNEG**  
RES SMD 160 OHM 2W 2512 WIDE  
[Vishay Dale](#)

RFQ



**RT1210CRD07481RL**  
RES SMD 481 OHM 0.25% 1/4W 1210  
[Yageo](#)

RFQ



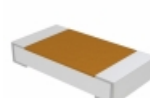
**RT0805WRE07953RL**  
RES SMD 953 OHM 0.05% 1/8W 0805  
[Yageo](#)

RFQ



**RT0805WRD07976RL**  
RES SMD 976 OHM 0.05% 1/8W 0805  
[Yageo](#)

RFQ



**TNPW120615K6BEEA**  
RES SMD 15.6K OHM 0.1% 1/4W 1206  
[Vishay Dale](#)

RFQ