

**LNK408LG**



**Power Integrations**

IC LED DRIVER OFFL DIM ESIP-7F  
Lead free / RoHS Compliant  
Integrated Circuits (ICs)

[LNK408LG.pdf](#)

**Buy Now**

**Out Stock**

**0 pcs**

Minimum:1

Multiples:100

Manufacturer lead time 10 weeks

We can supply LNK408LG, use the request quote form to request LNK408LG price and lead time. Zeano is a professional electronic components distributor. With 3+ Million line items of available electronic components can ship in short lead-time, over 250 thousand part numbers of electronic components in stock for immediately delivery, which may include part number LNK408LG. The price and lead time for LNK408LG depending on the quantity required and warehouse location. Contact us and our sales representative will provide you price. We look forward to work with you.

**Shopping Process**

**1**

**Confirm the product**

**2**

**submit the order**

**3**

**payment**

**4**

**wait for delivery**

**5**

**receive the goods**

**Specifications**

<b>Voltage - Supply (Min):</b>	36V
<b>Voltage - Supply (Max):</b>	725V
<b>Voltage - Output:</b>	-
<b>Type:</b>	AC DC Offline Switcher
<b>Topology:</b>	Flyback
<b>Supplier Device Package:</b>	eSIP-7F
<b>Series:</b>	LinkSwitch®-PH
<b>Packaging:</b>	Tube
<b>Package / Case:</b>	7-SIP, 6 Leads, Exposed Pad, Formed Leads
<b>Operating Temperature:</b>	-40°C ~ 150°C (TJ)
<b>Number of Outputs:</b>	1
<b>Mounting Type:</b>	Through Hole
<b>Internal Switch(s):</b>	Yes
<b>Frequency:</b>	66kHz
<b>Dimming:</b>	Triac
<b>Current - Output / Channel:</b>	2.39A
<b>Applications:</b>	Lighting

**Related products**



**LNK406LG**

IC LED DRIVER OFFL DIM ESIP-7F

[Power Integrations](#)

**RFQ**



**LNK410LG**

IC LED DRIVER OFFL DIM ESIP-7F

[Power Integrations](#)

**RFQ**



**LNK407LG**

IC LED DRIVER OFFL DIM ESIP-7F

[Power Integrations](#)

**RFQ**



**LNK408EG**

IC LED DRIVER OFFL DIM ESIP-7C

[Power Integrations](#)

**RFQ**



**LNK4114D-TL**

IC OFF-LINE CNTRLR 15W 8SO

[Power Integrations](#)

**RFQ**



**LNK406KG**

[POWER](#)

**RFQ**



**LNK409EG**

IC LED DRIVER OFFL DIM ESIP-7C

[Power Integrations](#)

**RFQ**



**LNK410EG**

IC LED DRIVER OFFL DIM ESIP-7C

[Power Integrations](#)

**RFQ**



**LNK409LG**

IC LED DRIVER OFFL DIM ESIP-7F

[Power Integrations](#)

**RFQ**



**LNK407EG**

IC LED DRIVER OFFL DIM ESIP-7C

[Power Integrations](#)

**RFQ**

**Guess You May Looking For**



**TNPW060313K3BEEN**

RES SMD 13.3KOHM 0.1% 1/10W 0603

[Vishay Dale](#)

**RFQ**

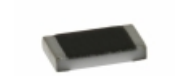


**PAT0805E7870BST1**

RES SMD 787 OHM 0.1% 1/5W 0805

[Vishay Thin Film](#)

**RFQ**



**TNPW080551K0BEEN**

RES SMD 51K OHM 0.1% 1/8W 0805

[Vishay Dale](#)

**RFQ**



**TNPW08056K49BEEN**

RES SMD 6.49K OHM 0.1% 1/8W 0805

[Vishay Dale](#)

**RFQ**



**HRG3216P-51R1-B-T5**

RES SMD 51.1 OHM 0.1% 1W 1206

[Susumu](#)

**RFQ**



**SM2615FT5R62**

RES SMD 5.62 OHM 1% 1W 2615

[Stackpole Electronics Inc.](#)

**RFQ**

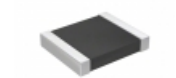


**HRG3216P-1581-B-T1**

RES SMD 1.58K OHM 0.1% 1W 1206

[Susumu](#)

**RFQ**



**RT1210CRB0791KL**

RES SMD 91K OHM 0.25% 1/4W 1210

[Yageo](#)

**RFQ**



**SM6227FT143R**

RES SMD 143 OHM 1% 3W 6227

[Stackpole Electronics Inc.](#)

**RFQ**



**RG3216N-9760-W-T1**

RES SMD 976 OHM 0.05% 1/4W 1206

[Susumu](#)

**RFQ**

