

MTCBA-C-N3



Multi-Tech Systems, Inc.

MODEM CDMA DC POWER US RS-232
Lead free / RoHS Compliant
RF/IF and RFID

- [1.MTCBA-C-N3.pdf](#)
- [2.MTCBA-C-N3.pdf](#)
- [3.MTCBA-C-N3.pdf](#)

Buy Now

Images are for reference only.

See Product Specifications for product details.

If you are interested to buy MTCBA-C-N3,Just Email us.

Sales@zeanoit.com

our sales team will reply you within 24 hours

Shopping Process

1

Confirm the product

2

submit the order

3

payment

4

wait for delivery

5

receive the goods

Specifications

Voltage - Supply:	5 V ~ 32 V
Series:	-
Sensitivity:	-
Power - Output:	-
Modulation or Protocol:	CDMA2000
Interface:	RS-232
Function:	Transceiver, CDMA, Modem
Frequency:	800MHz, 1.9GHz
Features:	-
Data Rate (Max):	153.6 kbps
Applications:	-

Related products



MTCBA-C-N16
MODEM CDMA RS-232 DC AERIS
[Multi-Tech Systems Inc.](#)

RFQ



MTCBA-C-N2
MODEM CDMA US BUNDLE RS-232
[Multi-Tech Systems Inc.](#)

RFQ



MTCBA-C-N9-NAM
MODEM CDMA RS-232 US AKEY=0
[Multi-Tech Systems Inc.](#)

RFQ



MTCBA-C-N2-NAM
MODEM CDMA US BUNDLE RS-232
[Multi-Tech Systems Inc.](#)

RFQ



MTCBA-C-N14-NAM
MODEM CDMA RS-232 US ALLTEL
[Multi-Tech Systems Inc.](#)

RFQ



MTCBA-C1-EN2-GP-N3
ROUTER WIRELESS DUAL CDMA
[Multi-Tech Systems Inc.](#)

RFQ



MTCBA-C-N12-NAM
MODEM CDMA US BUNDLE IP
[Multi-Tech Systems Inc.](#)

RFQ



MTCBA-C1-EN2-GP-N2
ROUTER WIRELESS DUAL CDMA
[Multi-Tech Systems Inc.](#)

RFQ



MTCBA-C-N9
MODEM CDMA RS-232 DC AKEY=0
[Multi-Tech Systems Inc.](#)

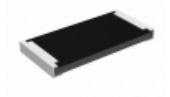
RFQ



MTCBA-C-N3-NAM
MODEM CDMA VERIZON RS-232
BUNDLE
[Multi-Tech Systems Inc.](#)

RFQ

Guess You May Looking For



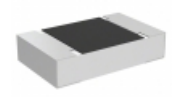
RCP2512B120RJTP
RES SMD 120 OHM 5% 22W 2512
[Vishay Dale](#)

RFQ



RG1608V-101-P-T1
RES SMD 100 OHM 0.02% 1/10W 0603
[Susumu](#)

RFQ



TNPU08054K02AZEN00
RES SMD 4.02KOHM 0.05% 1/8W 0805
[Vishay Dale](#)

RFQ



RG3216V-2430-B-T5
RES SMD 243 OHM 0.1% 1/4W 1206
[Susumu](#)

RFQ



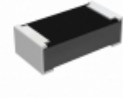
RG3216V-3601-B-T5
RES SMD 3.6K OHM 0.1% 1/4W 1206
[Susumu](#)

RFQ



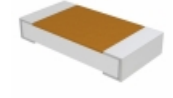
RG3216V-1212-B-T5
RES SMD 12.1K OHM 0.1% 1/4W 1206
[Susumu](#)

RFQ



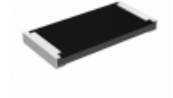
RCP0603B16R0JS2
RES SMD 16 OHM 5% 3.9W 0603
[Vishay Dale](#)

RFQ



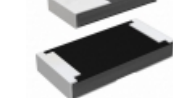
TNPU1206274KBZEN00
RES SMD 274K OHM 0.1% 1/4W 1206
[Vishay Dale](#)

RFQ



RCP2512B300RGS3
RES SMD 300 OHM 2% 22W 2512
[Vishay Dale](#)

RFQ



RCP1206W16R0GS2
RES SMD 16 OHM 2% 11W 1206
[Vishay Dale](#)

RFQ