

AT25080A-10PI-1.8

Microchip Technology

IC EEPROM 8KBIT 20MHZ 8DIP
 Contains lead / RoHS non-compliant
 Integrated Circuits (ICs)

[AT25080A-10PI-1.8.pdf](#)

Buy Now

part#AT25080A-10PI-1.8 is available, see description of AT25080A-10PI-1.8 as below

use the request quote form to request AT25080A-10PI-1.8 price and lead time.
 Buy Electronic Components at zeanoit.com .we are an independent distributor of electronic components with extensive inventory in stock.
 The price and lead time for AT25080A-10PI-1.8 depending on the quantity required, availability and warehouse location.Contact us today and our sales team will send you quotation soon.
 Email: sales@zeanoit.com

Shopping Process

1

Confirm the product

2

submit the order

3

payment

4

wait for delivery

5

receive the goods

Specifications

Voltage - Supply:	1.8 V ~ 5.5 V
Supplier Device Package:	8-PDIP
Speed:	5MHz, 10MHz, 20MHz
Series:	-
Packaging:	Tube
Package / Case:	8-DIP (0.300", 7.62mm)
Operating Temperature:	-40°C ~ 85°C (TA)
Memory Type:	Non-Volatile
Memory Size:	8Kb (1K x 8)
Memory Format:	EEPROM
Interface:	SPI Serial

Related products

AT25080A

in stock
[ATMEL](#)

RFQ


AT25080A-10PU-2.7

IC EEPROM 8KBIT 20MHZ 8DIP
[Microchip Technology](#)

RFQ


AT25080A-10PQ-2.7

in stock
[ATMEL](#)

RFQ


AT25080A-10PU-1.8

IC EEPROM 8KBIT 20MHZ 8DIP
[Microchip Technology](#)

RFQ


AT25080A-10PU-1.8

SPI Serial EEPROMs
[ATMEL](#)

RFQ


AT25080A-10PE-2.7

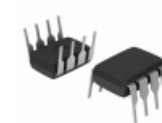
in stock
[ATMEL](#)

RFQ


AT25080-PC5.0

[ATMEL](#)

RFQ


AT25080A-10PI-2.7

IC EEPROM 8KBIT 20MHZ 8DIP
[Microchip Technology](#)

RFQ


AT25080-10PI-2.7

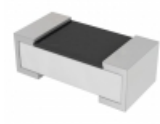
in stock
[ATMEL](#)

RFQ


AT25080-PI

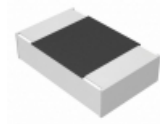
[AT](#)

RFQ

Guess You May Looking For

RC0402J000CS

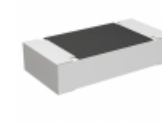
RES SMD 0.0 OHM JUMP 1/32W 01005
[Samsung Electro-Mechanics America, Inc.](#)

RFQ


ERA-6AEB243V

RES SMD 24K OHM 0.1% 1/8W 0805
[Panasonic Electronic Components](#)

RFQ


ERA-8AEB56R2V

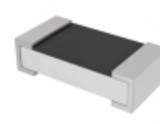
RES SMD 56.2 OHM 0.1% 1/4W 1206
[Panasonic Electronic Components](#)

RFQ


CRCW12062K40JNEA

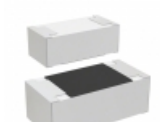
RES SMD 2.4K OHM 5% 1/4W 1206
[Vishay Dale](#)

RFQ


AC0603FR-07383KL

RES SMD 383K OHM 1% 1/10W 0603
[Yageo](#)

RFQ


CR0402-FX-1620GLF

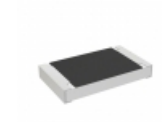
RES SMD 162 OHM 1% 1/16W 0402
[Bourns Inc.](#)

RFQ


CRCW1206137KFKEC

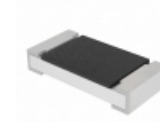
RES SMD 137K OHM 1% 1/4W 1206
[Vishay Dale](#)

RFQ


RCS08053K09FKEA

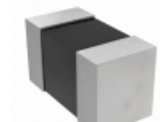
RES SMD 3.09K OHM 1% 0.4W 0805
[Vishay Dale](#)

RFQ


CRCW1206510RFKEAHP

RES SMD 510 OHM 1% 3/4W 1206
[Vishay Dale](#)

RFQ


RT0201DRD0733RL

RES SMD 33 OHM 0.5% 1/20W 0201
[Yageo](#)

RFQ