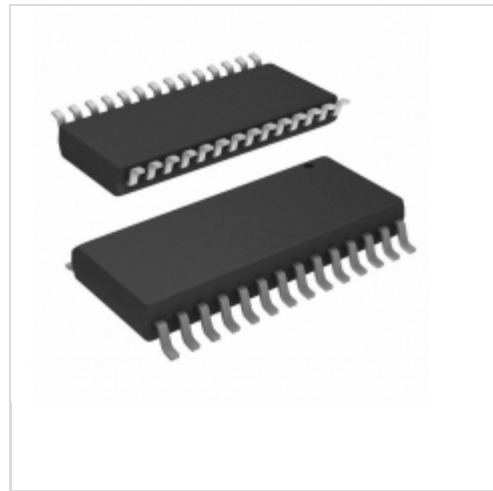


A3940KLW



Allegro MicroSystems, LLC.

IC CTRLR MOSFET FULL 28SOIC
Contains lead / RoHS non-compliant
Integrated Circuits (ICs)

[A3940KLW.pdf](#)

Buy Now

part#A3940KLW is available, see description of A3940KLW as below .
use the request quote form to request A3940KLW price and lead time.
Buy Electronic Components at zeanoit.com .we are an independent distributor of electronic components with extensive inventory in stock.
The price and lead time for A3940KLW depending on the quantity required, availability and warehouse location.Contact us today and our sales team will send you quotation soon.
Email: sales@zeanoit.com

Shopping Process

1

Confirm the product

2

submit the order

3

payment

4

wait for delivery

5

receive the goods

Specifications

Voltage - Supply:	7 V ~ 40 V
Voltage - Load:	-
Technology:	Power MOSFET
Supplier Device Package:	28-SOIC
Step Resolution:	-
Series:	-
Packaging:	Tube
Package / Case:	28-SOIC (0.295", 7.50mm Width)
Output Configuration:	Pre-Driver - Half Bridge (2)
Operating Temperature:	-40°C ~ 135°C (TA)
Mounting Type:	Surface Mount
Motor Type - Stepper:	-
Motor Type - AC, DC:	Brushed DC
Interface:	Parallel
Function:	Controller - Commutation, Direction Management
Current - Output:	-
Applications:	Automotive

Related products



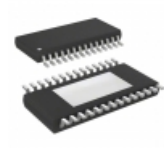
A3940KLWTR
IC CTRLR MOSFET FULL 28SOIC
[Allegro MicroSystems, LLC](#)

RFQ



A3940KLWTR-T
IC CTRLR MOSFET FULL 28SOIC
[Allegro MicroSystems, LLC](#)

RFQ



A3940KLP
IC CTRLR MOSFET FULL 28TSSOP
[Allegro MicroSystems, LLC](#)

RFQ



A3941KLPT
[ALLEGRO](#)

RFQ



A3940KLW-T
IC MOSFET CONTROLLER 28SOIC
[Allegro MicroSystems, LLC](#)

RFQ



A3941KLPT-T
[ALLEGRO](#)

RFQ



A3940KLPTR-T
IC CTRLR MOSFET FULL 28TSSOP
[Allegro MicroSystems, LLC](#)

RFQ



A3940KLP
[ALLEGRO](#)

RFQ



A3940KLP-T
IC MOSFET CONTROLLER 28TSSOP
[Allegro MicroSystems, LLC](#)

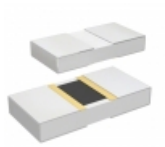
RFQ



A3940KLPTR
IC CTRLR MOSFET FULL 28TSSOP
[Allegro MicroSystems, LLC](#)

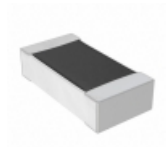
RFQ

Guess You May Looking For



PHP00805H8661BBT1
RES SMD 8.66K OHM 0.1% 5/8W 0805
[Vishay Thin Film](#)

RFQ



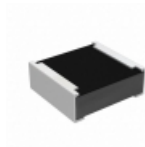
RNCF0603AKY12K4
RES SMD 12.4K OHM 1/10W 0603
[Stackpole Electronics Inc.](#)

RFQ



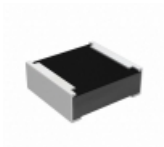
PHP00603E2550BBT1
RES SMD 255 OHM 0.1% 3/8W 0603
[Vishay Thin Film](#)

RFQ



RCP0505B300RGEA
RES SMD 300 OHM 2% 5W 0505
[Vishay Dale](#)

RFQ



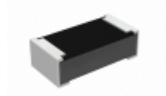
RCP0505B620RGTP
RES SMD 620 OHM 2% 5W 0505
[Vishay Dale](#)

RFQ



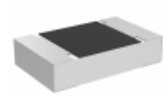
RG2012V-2320-W-T5
RES SMD 232 OHM 0.05% 1/8W 0805
[Susumu](#)

RFQ



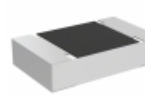
RCP0603B1K80GEB
RES SMD 1.8K OHM 2% 3.9W 0603
[Vishay Dale](#)

RFQ



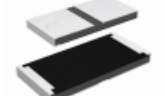
TNPU0805453RBZEN00
RES SMD 453 OHM 0.1% 1/8W 0805
[Vishay Dale](#)

RFQ



TNPU08054K87BZEN00
RES SMD 4.87K OHM 0.1% 1/8W 0805
[Vishay Dale](#)

RFQ



RCP2512W56R0JEA
RES SMD 56 OHM 5% 22W 2512
[Vishay Dale](#)

RFQ