

PCA9955ATW/Q900J



[NXP Semiconductors / Freescale](#)

IC LED DRIVER LIN DIM 28HTSSOP

Lead free / RoHS Compliant

Integrated Circuits (ICs)

[PCA9955ATW/Q900J.pdf](#)

[Buy Now](#)

Images are for reference only.

See Product Specifications for product details.

If you are interested to buy PCA9955ATW/Q900J, Just Email us.

Sales@zeanoit.com

our sales team will reply you within 24 hours

Shopping Process

1

Confirm the product

2

submit the order

3

payment

4

wait for delivery

5

receive the goods

Specifications

Voltage - Supply (Min):	3V
Voltage - Supply (Max):	5.5V
Voltage - Output:	20V
Type:	Linear
Topology:	-
Supplier Device Package:	28-HTSSOP
Series:	Automotive, AEC-Q100
Packaging:	Tape & Reel (TR)
Package / Case:	28-TSSOP (0.173", 4.40mm Width) Exposed Pad
Operating Temperature:	-40°C ~ 85°C (TA)
Number of Outputs:	16
Mounting Type:	Surface Mount
Internal Switch(s):	Yes
Frequency:	8MHz
Dimming:	I ² C
Current - Output / Channel:	57mA
Applications:	Backlight

Related products



PCA9955BTWJ

IC LED DRIVER LIN DIM 28HTSSOP
[NXP USA Inc.](#)

RFQ



PCA9955BTW/Q900J

IC LED DRIVER LIN DIM 28HTSSOP
[NXP USA Inc.](#)

RFQ



PCA9955BTWZ,118

[NXP](#)

RFQ



PCA9922PW,118

IC LED DRVR LIN DIM 60MA 16TSSOP
[NXP USA Inc.](#)

RFQ



PCA9952TW,118

IC LED DRIVER LIN DIM 28HTSSOP
[NXP USA Inc.](#)

RFQ



PCA9955TW

[NXP](#)

RFQ



PCA9922PW,112

IC LED DRVR LIN DIM 60MA 16TSSOP
[NXP USA Inc.](#)

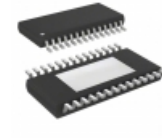
RFQ



PCA9922PW

[NXP](#)

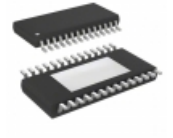
RFQ



PCA9952TW/Q900,118

IC LED DRIVER LIN DIM 28HTSSOP
[NXP USA Inc.](#)

RFQ



PCA9955ATWJ

IC LED DRIVER LIN DIM 28HTSSOP
[NXP USA Inc.](#)

RFQ

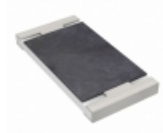
Guess You May Looking For



RG2012N-361-W-T5

RES SMD 360 OHM 0.05% 1/8W 0805
[Susumu](#)

RFQ



RT2512CKB0724K9L

RES SMD 24.9KOHM 0.25% 3/4W 2512
[Yageo](#)

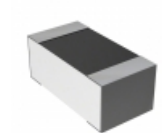
RFQ



SM2615FT3R92

RES SMD 3.92 OHM 1% 1W 2615
[Stackpole Electronics Inc.](#)

RFQ



RN73C1J348RBTFD

RES SMD 348 OHM 0.1% 1/16W 0603
[TE Connectivity Passive Product](#)

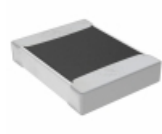
RFQ



HRG3216P-1200-B-T1

RES SMD 120 OHM 0.1% 1W 1206
[Susumu](#)

RFQ



TNPW121097R6BETA

RES SMD 97.6 OHM 0.1% 1/3W 1210
[Vishay Dale](#)

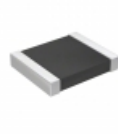
RFQ



RT1206WRD0786R6L

RES SMD 86.6 OHM 0.05% 1/4W 1206
[Yageo](#)

RFQ



RT1210WRB07392RL

RES SMD 392 OHM 0.05% 1/4W 1210
[Yageo](#)

RFQ



PTN1206E2230BST1

RES SMD 223 OHM 0.1% 0.4W 1206
[Vishay Thin Film](#)

RFQ



PTN1206E2233BST1

RES SMD 223K OHM 0.1% 0.4W 1206
[Vishay Thin Film](#)

RFQ