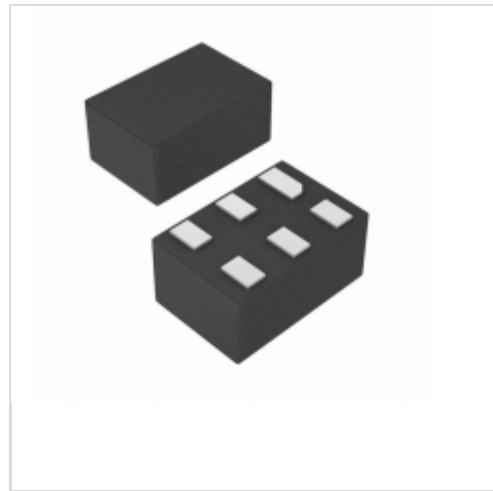


**MAX6896PALT+T**



**Maxim Integrated**

IC SEQUENCE/SUPERVISOR 6UDFN

Lead free / RoHS Compliant

Integrated Circuits (ICs)

[1.MAX6896PALT+T.pdf](#)

[2.MAX6896PALT+T.pdf](#)

**Buy Now**

**Out Stock**

**0 pcs**

Minimum:1

Multiples:100

Manufacturer lead time 10 weeks

Images are for reference only.

See Product Specifications for product details.

If you are interested to buy MAX6896PALT+T,Just Email us.

Sales@zeanoit.com

our sales team will reply you within 24 hours

**Shopping Process**

**1**

**Confirm the product**

**2**

**submit the order**

**3**

**payment**

**4**

**wait for delivery**

**5**

**receive the goods**

**Specifications**

<b>Voltage - Threshold:</b>	Adjustable/Selectable
<b>Type:</b>	Sequencer
<b>Supplier Device Package:</b>	6-uDFN (1.5x1.0)
<b>Series:</b>	-
<b>Reset Timeout:</b>	Adjustable/Selectable
<b>Reset:</b>	Active Low
<b>Packaging:</b>	Tape & Reel (TR)
<b>Package / Case:</b>	6-WDFN
<b>Output:</b>	Push-Pull, Totem Pole
<b>Operating Temperature:</b>	-40°C ~ 125°C (TA)
<b>Number of Voltages Monitored:</b>	1
<b>Mounting Type:</b>	Surface Mount

**Related products**



**MAX6896PAZT+**

in stock  
[MAXIM](#)

**RFQ**



**MAX6897**

in stock  
[MAXIM](#)

**RFQ**



**MAX6896AAZT+T**

IC SEQ/SUPERVISORY CIRC TSOT23-6  
[Maxim Integrated](#)

**RFQ**



**MAX6896AAZT+**

in stock  
[MAXIM](#)

**RFQ**



**MAX6896AAZT/V+T**

IC SEQ/SUPERVISORY CIRC TSOT23-6  
[Maxim Integrated](#)

**RFQ**



**MAX6896PAZT+T**

IC SEQ/SUPERVISORY CIRC TSOT23-6  
[Maxim Integrated](#)

**RFQ**



**MAX6896AALT+T**

IC SEQUENCE/SUPERVISOR 6UDFN  
[Maxim Integrated](#)

**RFQ**



**MAX6897AALT+T**

IC SEQUENCE/SUPERVISOR 6UDFN  
[Maxim Integrated](#)

**RFQ**



**MAX6897AALT+**

in stock  
[MAXIM](#)

**RFQ**



**MAX6896AALT+**

in stock  
[MAXIM](#)

**RFQ**

**Guess You May Looking For**



**RG1005P-1372-W-T1**

RES SMD 13.7K OHM 1/16W 0402  
[Susumu](#)

**RFQ**



**RG1005P-9090-C-T10**

RES SMD 909 OHM 0.25% 1/16W 0402  
[Susumu](#)

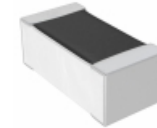
**RFQ**



**RG1608V-1400-B-T1**

RES SMD 140 OHM 0.1% 1/10W 0603  
[Susumu](#)

**RFQ**



**RGH1608-2C-P-133-B**

RES SMD 13K OHM 0.1% 1/6W 0603  
[Susumu](#)

**RFQ**



**PAC500001800FAC000**

RES 180 OHM 5W 1% AXIAL  
[Vishay BC Components](#)

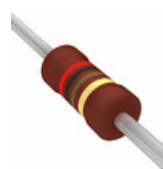
**RFQ**



**CFM14JT150K**

RES 150K OHM 1/4W 5% CF MINI  
[Stackpole Electronics Inc.](#)

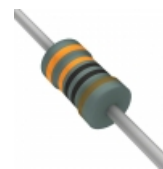
**RFQ**



**PR02000202000JR500**

RES 200 OHM 2W 5% AXIAL  
[Vishay BC Components](#)

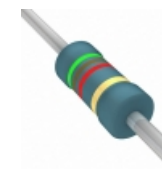
**RFQ**



**RNF14FTD330R**

RES 330 OHM 1/4W 1% AXIAL  
[Stackpole Electronics Inc.](#)

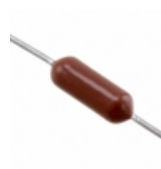
**RFQ**



**SFR16S0005101JA500**

RES 5.1K OHM 1/2W 5% AXIAL  
[Vishay BC Components](#)

**RFQ**



**RN60C1301FR36**

RES 1.3K OHM 1/4W 1% AXIAL  
[Vishay Dale](#)

**RFQ**