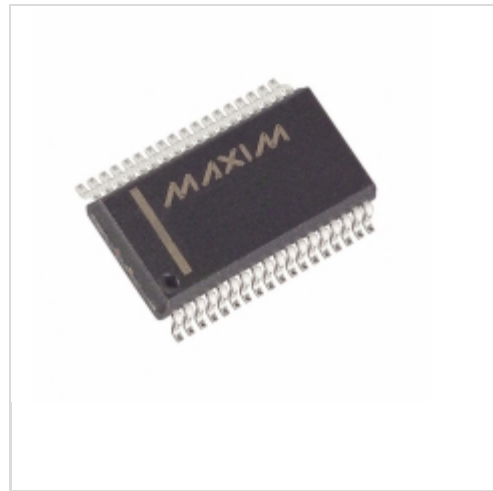


MAX7300AAX+

Maxim Integrated

IC I/O EXPANDER I2C 28B 36SSOP

Lead free / RoHS Compliant

Integrated Circuits (ICs)

1.MAX7300AAX+.pdf

2.MAX7300AAX+.pdf

part#MAX7300AAX+ is available, see description of MAX7300AAX+ as below .
 use the request quote form to request MAX7300AAX+ price and lead time.
 Buy Electronic Components at zeanoit.com .we are an independent distributor of
 electronic components with extensive inventory in stock.
 The price and lead time for MAX7300AAX+ depending on the quantity required,
 availability and warehouse location.Contact us today and our sales team will send you
 quotation soon.
 Email: sales@zeanoit.com

In Stock
135 pcs

Minimum:1

Multiples:100

Manufacturer lead time 10 weeks

PRICE

1 pcs	\$9.03
10 pcs	\$8.58
25 pcs	\$7.07
50 pcs	\$6.72
250 pcs	\$6.51
500 pcs	\$5.78

Shopping Process

1
Confirm the product
2
submit the order
3
payment
4
wait for delivery
5
receive the goods

Specifications

Voltage - Supply:	2.5 V ~ 5.5 V
Supplier Device Package:	36-SSOP
Series:	-
Packaging:	Tube
Package / Case:	36-BSOP (0.295", 7.50mm Width)
Output Type:	Push-Pull
Operating Temperature:	-40°C ~ 125°C
Number of I/O:	28
Mounting Type:	Surface Mount
Interrupt Output:	Yes
Interface:	I ² C
Features:	-
Current - Output Source/Sink:	4.5mA, 10mA
Clock Frequency:	400kHz

Related products


MAX7300AAI

in stock

[MAXIM](#)

RFQ


MAX7300AAX

in stock

[MAXIM](#)

RFQ


MAX7300AGL-T
[MAXIM](#)

RFQ


MAX7300ANI+

IC 2-WIRE INTRFC I/O EXP 28-DIP

[Maxim Integrated](#)

RFQ


MAX7300AAX+T

IC I/O EXPANDER I2C 28B 36SSOP

[Maxim Integrated](#)

RFQ


MAX7300ANI

in stock

[MAXIM](#)

RFQ


MAX7300AAI+T

IC I/O EXPANDER I2C 28B 28SSOP

[Maxim Integrated](#)

RFQ


MAX7300AGL

in stock

[MAXIM](#)

RFQ


MAX7300

in stock

[MAXIM](#)

RFQ


MAX7300AAI+

IC I/O EXPANDER I2C 28B 28SSOP

[Maxim Integrated](#)

RFQ

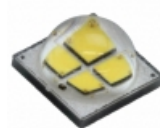
Guess You May Looking For


MTGBEZ-00-0000-0B0HJ040F

LED EASYWHT NEU WHT 4000K 2SMD

[Cree Inc.](#)

RFQ

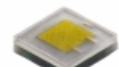

XMLBEZ-00-0000-0B0HV335F

LED EASYWHT WARM WHT 3500K

2SMD

[Cree Inc.](#)

RFQ


XPLAWT-H0-0000-000LV20E3

LED XLAMP XP-L 5000K WHITE SMD

[Cree Inc.](#)

RFQ


MKRAWT-00-0000-0B0UE40E7

LED XLAMP WARM WHITE 3000K 2SMD

[Cree Inc.](#)

RFQ


MTGBEZ-00-0000-0C0HM040H

LED EASYWHT NEU WHT 4000K 2SMD

[Cree Inc.](#)

RFQ


MTGBEZ-01-0000-0C00N035H

LED EASYWHT WARM WHT 3500K

2SMD

[Cree Inc.](#)

RFQ


MCE4WT-A2-0000-000GA8

LED XLAMP WARM WHITE 3000K 8SMD

[Cree Inc.](#)

RFQ


LTPL-P013NSS0

LED LTPL NEU WHT 4000K 8MM ROUND

[Lite-On Inc.](#)

RFQ


LCW CQAR.PC-MTNQ-5F8K-L1M1-700-R18-SA-LM

LED OSLOM SMD

[OSRAM Opto Semiconductors Inc.](#)

RFQ


HM16S-CALBL-001

HEATSINK 20W MR16 CONFIG BLACK

[Aavid Thermalloy](#)

RFQ