

ST2044BDR



[STMicroelectronics](#)

IC POWER DISTRIB SW 500MA 16SOIC
Lead free / RoHS Compliant
Integrated Circuits (ICs)

[ST2044BDR.pdf](#)

[Buy Now](#)

Images are for reference only.

See Product Specifications for product details.

If you are interested to buy ST2044BDR,Just Email us.

Sales@zeanoit.com

our sales team will reply you within 24 hours

Shopping Process

1

Confirm the product

2

submit the order

3

payment

4

wait for delivery

5

receive the goods

Specifications

Voltage - Supply (Vcc/Vdd):	Not Required
Voltage - Load:	2.7 V ~ 5.5 V
Switch Type:	General Purpose
Supplier Device Package:	16-SO
Series:	-
Rds On (Typ):	80 mOhm
Ratio - Input:Output:	2 x 1:2
Packaging:	Tape & Reel (TR)
Package / Case:	16-SOIC (0.154", 3.90mm Width)
Output Type:	N-Channel
Output Configuration:	High Side
Operating Temperature:	-40°C ~ 125°C (TJ)
Number of Outputs:	4
Interface:	On/Off
Input Type:	Non-Inverting
Features:	-
Fault Protection:	Current Limiting (Fixed), Over Temperature, UVLO
Current - Output (Max):	500mA

Related products



ST2045C
DIODE ARRAY SCHOTTKY 45V TO220AB
[SMC Diode Solutions](#)

[RFQ](#)



ST2041BDR
IC DISTRIBUTION SWITCH ASD 8SOIC
[STMicroelectronics](#)

[RFQ](#)



ST2044B
in stock
[ST](#)

[RFQ](#)



ST2044BD
IC POWER DISTRIB SW 500MA 16SOIC
[STMicroelectronics](#)

[RFQ](#)



ST2045AXTR
DIODE SCHOTTKY 45V R-6
[SMC Diode Solutions](#)

[RFQ](#)



ST2052BD
[ST](#)

[RFQ](#)



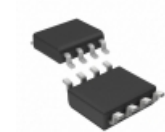
ST2042BDR
IC POWER DISTRIB SW 500MA 8-SOIC
[STMicroelectronics](#)

[RFQ](#)



ST2052BDR
IC POWER DISTRIB SW 500MA 8-SOIC
[STMicroelectronics](#)

[RFQ](#)



ST2051BDR
IC DISTRIBUTION SWITCH ASD 8SOIC
[STMicroelectronics](#)

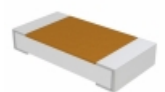
[RFQ](#)



ST2042BD
IC POWER DISTRIB SW 500MA 8-SOIC
[STMicroelectronics](#)

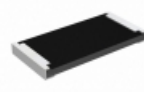
[RFQ](#)

Guess You May Looking For



D55342H07B21E0RT5
RES SMD 21K OHM 1% 1/4W 1206
[Vishay Dale](#)

[RFQ](#)



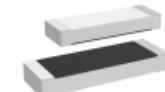
RCP2512B75R0JED
RES SMD 75 OHM 5% 22W 2512
[Vishay Dale](#)

[RFQ](#)



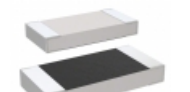
Y40451K00000A0W
RES SMD 1K OHM 0.05% 1/20W 0505
[Vishay Foil Resistors \(Division of Vishay Precisio](#)

[RFQ](#)



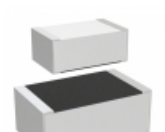
M55342H05B806DRWS
RES SMD 806 OHM 1% 0.225W 2208
[Vishay Dale](#)

[RFQ](#)



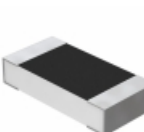
M55342K03B12B0RWS
RES SMD 12K OHM 0.1% 1/5W 1005
[Vishay Dale](#)

[RFQ](#)



M55342K06B402DRWSV
RES SMD 402 OHM 1% 0.15W 0705
[Vishay Dale](#)

[RFQ](#)



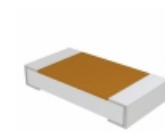
Y162523R5000C9R
RES SMD 23.5 OHM 0.25% 0.3W 1206
[Vishay Foil Resistors \(Division of Vishay Precisio](#)

[RFQ](#)



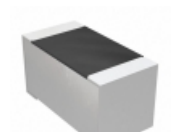
Y117216R7000C9W
RES SMD 16.7OHM 0.25% 1/10W 0805
[Vishay Foil Resistors \(Division of Vishay Precisio](#)

[RFQ](#)



D55342E07B1B21RWI
RES SMD 1.21K OHM 0.1% 1/4W 1206
[Vishay Dale](#)

[RFQ](#)



M55342K12B90D9MWSV
RES SMD 90.9 OHM 1% 1/10W 0603
[Vishay Dale](#)

[RFQ](#)