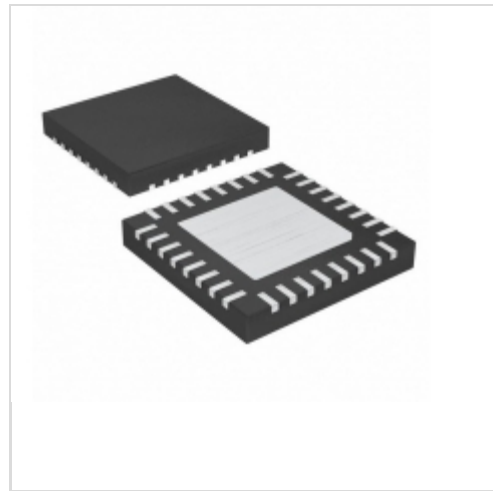


**MAX17109ETJ+T**


[Maxim Integrated](#)  
 IC SCAN DVR DUAL HV 32-TQFN  
 Lead free / RoHS Compliant  
 Integrated Circuits (ICs)

[MAX17109ETJ+T.pdf](#)

**Buy Now**

part#MAX17109ETJ+T is available, see description of MAX17109ETJ+T as below .  
 use the request quote form to request MAX17109ETJ+T price and lead time.  
 Buy Electronic Components at zeanoit.com .we are an independent distributor of  
 electronic components with extensive inventory in stock.  
 The price and lead time for MAX17109ETJ+T depending on the quantity required,  
 availability and warehouse location.Contact us today and our sales team will send you  
 quotation soon.  
 Email: sales@zeanoit.com

## Shopping Process

**1**

Confirm the product

**2**

submit the order

**3**

payment

**4**

wait for delivery

**5**

receive the goods

## Specifications

<b>Voltage - Supply:</b>	-
<b>Supplier Device Package:</b>	32-TQFN-EP (5x5)
<b>Series:</b>	-
<b>Packaging:</b>	Tape & Reel (TR)
<b>Package / Case:</b>	32-WFQFN Exposed Pad
<b>Operating Temperature:</b>	-40°C ~ 85°C
<b>Mounting Type:</b>	Surface Mount
<b>Current - Supply:</b>	-
<b>Applications:</b>	LCD Monitor, Notebook Display

## Related products



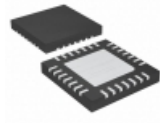
**MAX1710EEG-T**  
 in stock  
[MAXIM](#)

RFQ



**MAX17109ETJ**  
[MAXIM](#)

RFQ



**MAX17108ETI+**  
 IC LEVEL SHIFTER 10CH 28TQFN  
[Maxim Integrated](#)

RFQ



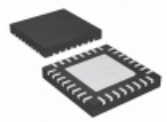
**MAX1710EEG**  
 in stock  
[MAXIM](#)

RFQ



**MAX1710EEG-TG074**  
[MAXIM](#)

RFQ



**MAX17109ETJ+**  
 IC SCAN DVR DUAL HV 32-TQFN  
[Maxim Integrated](#)

RFQ



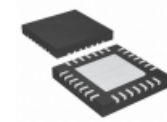
**MAX1710EEG**  
 IC CTRLR HS 4-BIT ADJ 24-QSOP  
[Maxim Integrated](#)

RFQ



**MAX1710EEG+**  
[MAXIM](#)

RFQ



**MAX17108ETI+T**  
 IC LEVEL SHIFTER 10CH 28TQFN  
[Maxim Integrated](#)

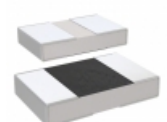
RFQ



**MAX17108EVKIT+**  
 EVAL KIT FOR MAX17108  
[Maxim Integrated](#)

RFQ

## Guess You May Looking For



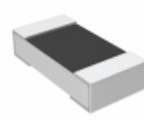
**M55342E11B133DRWI**  
 RES SMD 133 OHM 1% 1/20W 0402  
[Vishay Dale](#)

RFQ



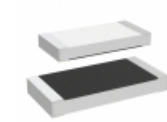
**Y112120R0000Q9L**  
 RES SMD 20 OHM 0.02% 1/4W J LEAD  
[Vishay Foil Resistors \(Division of Vishay Precisio](#)

RFQ



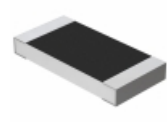
**PLT0603Z5970LBTS**  
 RES SMD 597 OHM 0.01% 0.15W 0603  
[Vishay Thin Film](#)

RFQ



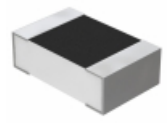
**M55342K09B56D2RWSV**  
 RES SMD 56.2 OHM 1% 1W 2512  
[Vishay Dale](#)

RFQ



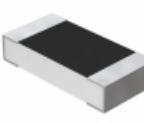
**Y1627412R000B9W**  
 RES SMD 412 OHM 0.1% 1/2W 2010  
[Vishay Foil Resistors \(Division of Vishay Precisio](#)

RFQ



**Y16246K04000T9W**  
 RES SMD 6.04KOHM 0.01% 1/5W 0805  
[Vishay Foil Resistors \(Division of Vishay Precisio](#)

RFQ



**Y16251K11570Q23R**  
 RES SMD 1.1157K OHM 0.3W 1206  
[Vishay Foil Resistors \(Division of Vishay Precisio](#)

RFQ



**9C08052A1073FKHFT**  
 RES SMD 107K OHM 1% 1/8W 0805  
[Yageo](#)

RFQ



**9C12063A4R22FGHFT**  
 RES SMD 4.22 OHM 1% 1/4W 1206  
[Yageo](#)

RFQ



**9T12062A4640CBHFT**  
 RES SMD 464 OHM 0.25% 1/8W 1206  
[Yageo](#)

RFQ