

DRV2605LTDGSRQ1



N/A
 IC ERM/LRA HAPTIC DRIVER
 Lead free / RoHS Compliant
 Integrated Circuits (ICs)

Buy Now

We can supply DRV2605LTDGSRQ1, use the request quote form to request DRV2605LTDGSRQ1 price and lead time. Zeano is a professional electronic components distributor. With 3+ Million line items of available electronic components can ship in short lead-time, over 250 thousand part numbers of electronic components in stock for immediately delivery, which may include part number DRV2605LTDGSRQ1. The price and lead time for DRV2605LTDGSRQ1 depending on the quantity required and warehouse location. Contact us and our sales representative will provide you price. We look forward to work with you.

Out Stock

0 pcs

Minimum:1

Multiples:1

Manufacturer lead time 10 weeks

Shopping Process

1

Confirm the product

2

submit the order

3

payment

4

wait for delivery

5

receive the goods

Specifications

Voltage - Supply:	2 V ~ 5.2 V
Voltage - Load:	2 V ~ 5.2 V
Technology:	Power MOSFET
Supplier Device Package:	10-VSSOP
Step Resolution:	-
Series:	Automotive, AEC-Q100
Packaging:	Tape & Reel (TR)
Package / Case:	10-TFSOP, 10-MSOP (0.118", 3.00mm Width)
Output Configuration:	Half Bridge (2)
Operating Temperature:	-40°C ~ 150°C (TJ)
Mounting Type:	Surface Mount
Motor Type - Stepper:	-
Motor Type - AC, DC:	ERM, LRA
Interface:	I ² C
Function:	Driver - Fully Integrated, Control and Power Stage
Current - Output:	-
Applications:	Haptic Feedback

Related products



DRV2605LEVM-CT
 EVAL BOARD HAPTIC DRVR DRV2605L
[N/A](#)

RFQ



DRV2605YZFR
 IC ERM/LRA HAPTIC DRIVER 9DSBGA
[N/A](#)

RFQ



DRV2605LEVM-MD
 EVAL BOARD MULTI DVR ERM/LRA
[N/A](#)

RFQ



DRV2605LDGSEVM-M
 EVAL BOARD FOR DRV2605
[N/A](#)

RFQ



DRV2605YZFT
 IC ERM/LRA HAPTIC DRIVER 9DSBGA
[N/A](#)

RFQ



DRV2624EVM-MINI
 EVAL BOARD FOR DRV2624
[N/A](#)

RFQ



DRV2605LDGST
 NEXT GEN DRV260X LRA/ERM DRIVER
[N/A](#)

RFQ



DRV2605LYZFT
 IC ERM/LRA HAPTIC DRIVER 9DSBGA
[N/A](#)

RFQ



DRV2605LYZFR
 IC ERM/LRA HAPTIC DRIVER 9DSBGA
[N/A](#)

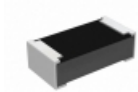
RFQ



DRV2605LDGSR
 NEXT GEN DRV260X LRA/ERM DRIVER
[N/A](#)

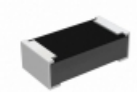
RFQ

Guess You May Looking For



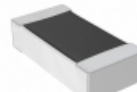
RCP0603B1K00GEA
 RES SMD 1K OHM 2% 3.9W 0603
[Vishay Dale](#)

RFQ



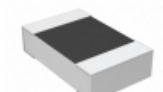
RCP0603B300RJE
 RES SMD 300 OHM 5% 3.9W 0603
[Vishay Dale](#)

RFQ



RNCF0603AKY4K99
 RES SMD 4.99K OHM 1/10W 0603
[Stackpole Electronics Inc.](#)

RFQ



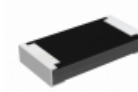
RN73C2A35K7ATD
 RES SMD 35.7K OHM 1/10W 0805
[TE Connectivity Passive Product](#)

RFQ



PWR4525WR500J
 RES SMD 0.5 OHM 5% 2W 4525
[Bourns Inc.](#)

RFQ



RCP1206B180RJE
 RES SMD 180 OHM 5% 11W 1206
[Vishay Dale](#)

RFQ



RCP0603W360RGS3
 RES SMD 360 OHM 2% 3.9W 0603
[Vishay Dale](#)

RFQ



RCP0505W120RJS3
 RES SMD 120 OHM 5% 5W 0505
[Vishay Dale](#)

RFQ



RG1005V-182-W-T1
 RES SMD 1.8KOHM 0.05% 1/16W 0402
[Susumu](#)

RFQ



PWR163S-25-50R0JE
 RES SMD 50 OHM 5% 25W DPAK
[Bourns Inc.](#)

RFQ

