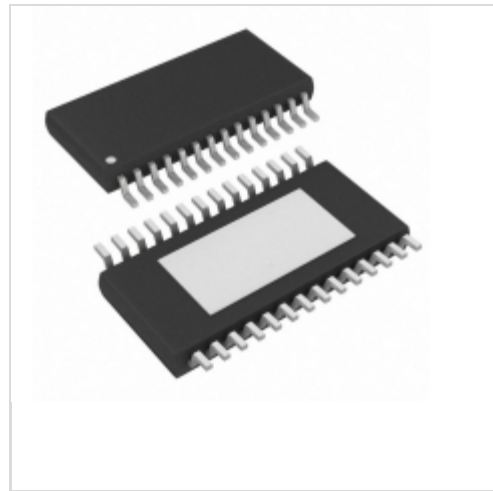


## LT3965IFE#TRPBF



### Linear Technology / Analog Devices

IC LED BYPASS SWITCH 28TSSOP

Lead free / RoHS Compliant

Integrated Circuits (ICs)

[LT3965IFE#TRPBF.pdf](#)

[Buy Now](#)

**Out Stock**

**0 pcs**

Minimum:1

Multiples:100

Manufacturer lead time 10 weeks

We can supply LT3965IFE#TRPBF, use the request quote form to request LT3965IFE#TRPBF price and lead time. Zeano is a professional electronic components distributor. With 3+ Million line items of available electronic components can ship in short lead-time, over 250 thousand part numbers of electronic components in stock for immediately delivery, which may include part number LT3965IFE#TRPBF. The price and lead time for LT3965IFE#TRPBF depending on the quantity required and warehouse location. Contact us and our sales representative will provide you price. We look forward to work with you.

### Shopping Process

**1**

Confirm the product

**2**

submit the order

**3**

payment

**4**

wait for delivery

**5**

receive the goods

### Specifications

<b>Voltage - Supply (Min):</b>	8V
<b>Voltage - Supply (Max):</b>	60V
<b>Voltage - Output:</b>	-
<b>Type:</b>	DC DC Regulator
<b>Topology:</b>	Step-Down (Buck), Step-Up (Boost)
<b>Supplier Device Package:</b>	28-TSSOP-EP
<b>Series:</b>	-
<b>Packaging:</b>	Tape & Reel (TR)
<b>Package / Case:</b>	28-TSSOP (0.173", 4.40mm Width) Exposed Pad
<b>Operating Temperature:</b>	-40°C ~ 125°C (TJ)
<b>Number of Outputs:</b>	8
<b>Mounting Type:</b>	Surface Mount
<b>Internal Switch(s):</b>	Yes
<b>Frequency:</b>	-
<b>Dimming:</b>	I <sup>2</sup> C, PWM
<b>Current - Output / Channel:</b>	500mA
<b>Applications:</b>	Automotive, Lighting, Signage

### Related products

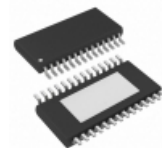


#### LT3970EDDB#TRPBF

IC REG BUCK ADJ 535MA 10DFN

[Linear Technology](#)

RFQ



#### LT3965EFE#PBF

OCTAL MATRIX LED BYPASS SWITCH

[Linear Technology](#)

RFQ

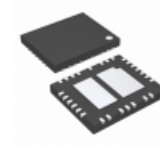


#### LT3970EDDB#TRMPBF

IC REG BUCK ADJ 535MA 10DFN

[Linear Technology](#)

RFQ

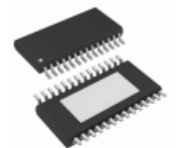


#### LT3959IUHE#PBF

IC REG MULT CONFIG INV ADJ 36QFN

[Linear Technology](#)

RFQ

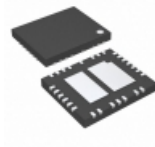


#### LT3965IFE#PBF

OCTAL MATRIX LED BYPASS SWITCH

[Linear Technology](#)

RFQ

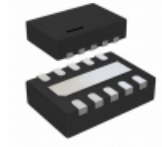


#### LT3959IUHE#TRPBF

IC REG MULT CONFIG INV ADJ 36QFN

[Linear Technology](#)

RFQ

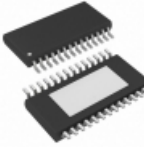


#### LT3970EDDB-3.3#TRMPBF

IC REG BUCK 3.3V 535MA 10DFN

[Linear Technology](#)

RFQ



#### LT3965EFE#TRPBF

IC LED BYPASS SWITCH 28TSSOP

[Linear Technology](#)

RFQ



#### LT3970EDDB#PBF

LINEAR

RFQ



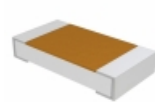
#### LT3970EDDB

in stock

LINEAR

RFQ

### Guess You May Looking For



#### TNPW12069K53BEEN

RES SMD 9.53K OHM 0.1% 1/4W 1206

[Vishay Dale](#)

RFQ



#### RG2012N-4422-W-T1

RES SMD 44.2KOHM 0.05% 1/8W 0805

[Susumu](#)

RFQ



#### RT2512BKE0726R1L

RES SMD 26.1 OHM 0.1% 3/4W 2512

[Yageo](#)

RFQ



#### HRG3216P-3742-B-T5

RES SMD 37.4K OHM 0.1% 1W 1206

[Susumu](#)

RFQ

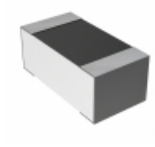


#### RT1206WRB0775KL

RES SMD 75K OHM 0.05% 1/4W 1206

[Yageo](#)

RFQ



#### RN73C1J2K37BTDf

RES SMD 2.37KOHM 0.1% 1/16W 0603

[TE Connectivity Passive Product](#)

RFQ

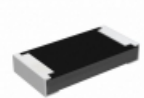


#### SM6227FT178R

RES SMD 178 OHM 1% 3W 6227

[Stackpole Electronics Inc.](#)

RFQ

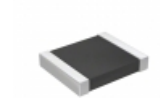


#### RCP1206B330RGEA

RES SMD 330 OHM 2% 11W 1206

[Vishay Dale](#)

RFQ

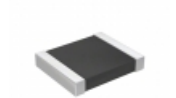


#### RT1210WRB07180RL

RES SMD 180 OHM 0.05% 1/4W 1210

[Yageo](#)

RFQ



#### RT1210WRB074K7L

RES SMD 4.7K OHM 0.05% 1/4W 1210

[Yageo](#)

RFQ

