

NCP1612BDR2G



[AMI Semiconductor / ON Semiconductor](#)

IC PFC CTRL CRM 10SOIC
Lead free / RoHS Compliant
Integrated Circuits (ICs)

[NCP1612BDR2G.pdf](#)

Buy Now

Images are for reference only.

See Product Specifications for product details.

If you are interested to buy NCP1612BDR2G, Just Email us.

Sales@zeanoit.com

our sales team will reply you within 24 hours

Out Stock

0 pcs

Minimum:1

Multiples:100

Manufacturer lead time 10 weeks

Shopping Process

1

Confirm the product

2

submit the order

3

payment

4

wait for delivery

5

receive the goods

Specifications

Voltage - Supply:	9.5 V ~ 35 V
Supplier Device Package:	10-SOIC
Series:	-
Packaging:	Tape & Reel (TR)
Package / Case:	10-SOP (0.154", 3.90mm Width)
Operating Temperature:	-40°C ~ 125°C
Mounting Type:	Surface Mount
Mode:	Current Controlled Frequency Foldback (CCFF), Critical Conduction (CRM)
Frequency - Switching:	-
Current - Startup:	20µA

Related products



NCP1612ADR2G

IC PFC CTRL CRM 10SOIC
[ON Semiconductor](#)

RFQ



NCP1615A1DR2G

IC CTRLR PFC HV ACTIVE X2 14SOIC
[ON Semiconductor](#)

RFQ



NCP1615CDR2G

IC CTRLR PFC HV ACTIVE X2 16SOIC
[ON Semiconductor](#)

RFQ



NCP1615C2DR2G

IC CTRLR PFC HV ACTIVE X2 16SOIC
[ON Semiconductor](#)

RFQ



NCP1612A3DR2G

IC PFC CTRL CRM 10SOIC
[ON Semiconductor](#)

RFQ



NCP1611GEVB

EVAL BOARD NCP1611G
[ON Semiconductor](#)

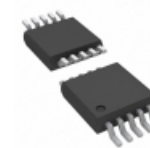
RFQ



NCP1612GEVB

EVAL BOARD NCP1612G
[ON Semiconductor](#)

RFQ



NCP1612A2DR2G

IC PFC CTRL CRM 10SOIC
[ON Semiconductor](#)

RFQ



NCP1612A1DR2G

IC PFC CTRL CRM 10SOIC
[ON Semiconductor](#)

RFQ



NCP1615ADR2G

IC CTRLR PFC HV ACTIVE X2 14SOIC
[ON Semiconductor](#)

RFQ

Guess You May Looking For



RG2012V-5901-P-T1

RES SMD 5.9K OHM 0.02% 1/8W 0805
[Susumu](#)

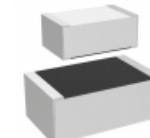
RFQ



RT0603WRB076R81L

RES SMD 6.81OHM 0.05% 1/10W 0603
[Yageo](#)

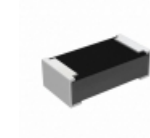
RFQ



M55342E06B1B82RT1

RES SMD 1.82KOHM 0.1% 0.15W 0805
[Vishay Dale](#)

RFQ



RCP0603B27R0JEC

RES SMD 27 OHM 5% 3.9W 0603
[Vishay Dale](#)

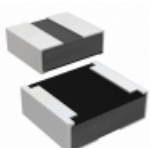
RFQ



RCP2512B360RGEB

RES SMD 360 OHM 2% 22W 2512
[Vishay Dale](#)

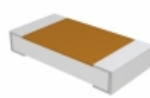
RFQ



RCP0505W820RJS2

RES SMD 820 OHM 5% 5W 0505
[Vishay Dale](#)

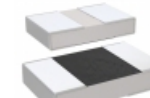
RFQ



TNPU120640K2AZEN00

RES SMD 40.2KOHM 0.05% 1/4W 1206
[Vishay Dale](#)

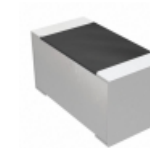
RFQ



M55342H11B49E9RT5

RES SMD 49.9K OHM 1% 1/20W 0402
[Vishay Dale](#)

RFQ



M55342E12B301DRT5

RES SMD 301 OHM 1% 1/10W 0603
[Vishay Dale](#)

RFQ



S5-0R027J8

RES SMD 0.027 OHM 5% 4W 8230
[Riedon](#)

RFQ