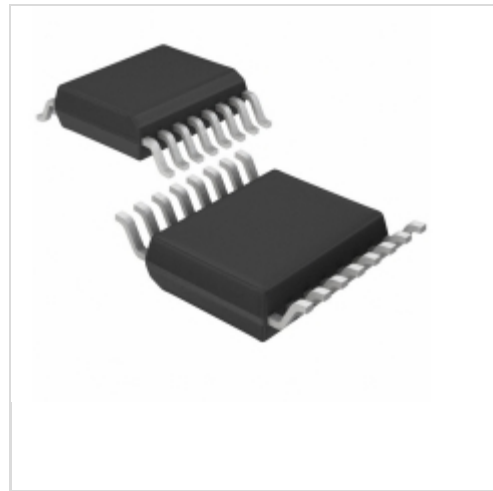


## IRS2110STRPBF



### International Rectifier (Infineon Technologies)

IC DRIVER HIGH/LOW SIDE 16-SOIC

Lead free / RoHS Compliant

Integrated Circuits (ICs)

[IRS2110STRPBF.pdf](#)

**Buy Now**

We can supply International Rectifier (Infineon Technologies) IRS2110STRPBF, use the request quote form to request IRS2110STRPBF price, International Rectifier (Infineon Technologies) Datasheet PDF and lead time. Zeanoit.com is a professional electronic components distributor. With 3+ Million line items of available electronic components can ship in short lead-time, over 250 thousand part numbers of electronic components in stock for immediately delivery, which may include part number IRS2110STRPBF. The price and lead time for IRS2110STRPBF depending on the quantity required, availability and warehouse location.

**Out Stock**

**0 pcs**

Minimum:1

Multiples:100

Manufacturer lead time 10 weeks

#### PRICE

1000 pcs	\$1.196
2000 pcs	\$1.114
5000 pcs	\$1.073

### Shopping Process

**1**

Confirm the product

**2**

submit the order

**3**

payment

**4**

wait for delivery

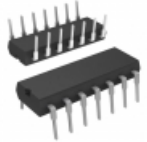
**5**

receive the goods

### Specifications

<b>Voltage - Supply:</b>	10 V ~ 20 V
<b>Supplier Device Package:</b>	16-SOIC
<b>Series:</b>	-
<b>Rise / Fall Time (Typ):</b>	25ns, 17ns
<b>Packaging:</b>	Tape & Reel (TR)
<b>Package / Case:</b>	16-SOIC (0.295", 7.50mm Width)
<b>Operating Temperature:</b>	-40°C ~ 150°C (TJ)
<b>Number of Drivers:</b>	2
<b>Mounting Type:</b>	Surface Mount
<b>Logic Voltage - VIL, VIH:</b>	6V, 9.5V
<b>Input Type:</b>	Non-Inverting
<b>High Side Voltage - Max (Bootstrap):</b>	500V
<b>Gate Type:</b>	IGBT, N-Channel MOSFET
<b>Driven Configuration:</b>	Half-Bridge
<b>Current - Peak Output (Source, Sink):</b>	2.5A, 2.5A
<b>Channel Type:</b>	Independent

### Related products



**IRS2110PBF**  
IC DRIVER HI/LO SIDE 500V 14-DIP  
[Infineon Technologies](#)

RFQ



**IRS2109STRPBF.**  
[IR](#)

RFQ



**IRS2112**  
[IR](#)

RFQ



**IRS2111**  
[IR](#)

RFQ



**IRS2111PBF**  
IC DRIVER HALF-BRIDGE 8-DIP  
[Infineon Technologies](#)

RFQ



**IRS2111SPBF**  
IC DRIVER HALF-BRIDGE 8-SOIC  
[Infineon Technologies](#)

RFQ



**IRS2111STRPBF**  
IC DRIVER HALF-BRIDGE 8-SOIC  
[Infineon Technologies](#)

RFQ



**IRS2110SPBF**  
IC DRIVER HIGH/LOW SIDE 16-SOIC  
[Infineon Technologies](#)

RFQ



**IRS2110S**  
[IOR](#)

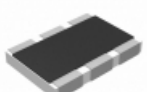
RFQ



**IRS2109STRPBF**  
IC DVR HALF BRIDGE 8-SOIC  
[Infineon Technologies](#)

RFQ

### Guess You May Looking For



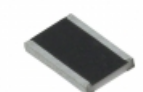
**AA1218FK-07511KL**  
RES SMD 511K OHM 1W 1812 WIDE  
[Yageo](#)

RFQ



**RCL12181R13FKEK**  
RES SMD 1.13 OHM 1W 1812 WIDE  
[Vishay Dale](#)

RFQ



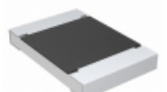
**RCL121866R5FKEK**  
RES SMD 66.5 OHM 1W 1812 WIDE  
[Vishay Dale](#)

RFQ



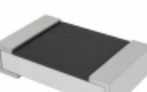
**RNCF1210BTE61K9**  
RES SMD 61.9K OHM 0.1% 1/3W 1210  
[Stackpole Electronics Inc.](#)

RFQ



**CRCW12189R76FKEK**  
RES SMD 9.76 OHM 1% 1W 1218  
[Vishay Dale](#)

RFQ



**PE0805JRF7T0R006L**  
RES SMD 0.006 OHM 5% 1/3W 0805  
[Yageo](#)

RFQ



**TNPW08052K18BEEA**  
RES SMD 2.18K OHM 0.1% 1/8W 0805  
[Vishay Dale](#)

RFQ



**RT0805WRE0791KL**  
RES SMD 91K OHM 0.05% 1/8W 0805  
[Yageo](#)

RFQ



**RNCF1210DKE28R7**  
RES SMD 28.7 OHM 0.5% 1/3W 1210  
[Stackpole Electronics Inc.](#)

RFQ



**RNCF1210DKE88R7**  
RES SMD 88.7 OHM 0.5% 1/3W 1210  
[Stackpole Electronics Inc.](#)

RFQ