

**0233006.MXP**



[Hamlin / Littelfuse](#)

FUSE GLASS 6A 125VAC 5X20MM

Lead free / RoHS Compliant

Circuit Protection

[0233006.MXP.pdf](#)

**Buy Now**

We can supply 0233006.MXP, use the request quote form to request 0233006.MXP price and lead time. Zeano is a professional electronic components distributor. With 3+ Million line items of available electronic components can ship in short lead-time, over 250 thousand part numbers of electronic components in stock for immediately delivery, which may include part number 0233006.MXP. The price and lead time for 0233006.MXP depending on the quantity required and warehouse location. Contact us and our sales representative will provide you price. We look forward to work with you.

**Out Stock**

**0 pcs**

Minimum: 1

Multiples: 100

Manufacturer lead time 10 weeks

**PRICE**

1 pcs	\$0.89
5 pcs	\$0.858
10 pcs	\$0.803
50 pcs	\$0.665
100 pcs	\$0.554
250 pcs	\$0.54
500 pcs	\$0.457
1000 pcs	\$0.402
5000 pcs	\$0.36

**Shopping Process**

**1**

**Confirm the product**

**2**

**submit the order**

**3**

**payment**

**4**

**wait for delivery**

**5**

**receive the goods**

**Specifications**

<b>Voltage Rating - DC:</b>	-
<b>Voltage Rating - AC:</b>	125V
<b>Size / Dimension:</b>	0.205" Dia x 0.787" L (5.20mm x 20.00mm)
<b>Series:</b>	233
<b>Response Time:</b>	Medium
<b>Packaging:</b>	Bulk
<b>Package / Case:</b>	5mm x 20mm
<b>Operating Temperature:</b>	-55°C ~ 125°C
<b>Mounting Type:</b>	Holder
<b>Melting I<sup>2</sup>t:</b>	131.455
<b>Fuse Type:</b>	Cartridge, Glass
<b>DC Cold Resistance:</b>	0.0179 Ohm
<b>Current Rating:</b>	6A
<b>Color:</b>	-
<b>Breaking Capacity @ Rated Voltage:</b>	10kA
<b>Approvals:</b>	CE, CSA, KC, PSE, UL

**Related products**



**0233006.MXBP**  
FUSE GLASS 6A 125VAC 5X20MM  
[Littelfuse Inc.](#)

RFQ



**0233006.M**  
FUSE GLASS 6A 125VAC 5X20MM  
[Littelfuse Inc.](#)

RFQ



**0233006.MXF11P**  
FUSE GLASS 6A 125VAC 5X20MM  
[Littelfuse Inc.](#)

RFQ



**0233007.MXP**  
FUSE GLASS 7A 125VAC 5X20MM  
[Littelfuse Inc.](#)

RFQ



**0233008.MXEP**  
FUSE GLASS 8A 125VAC 5X20MM  
[Littelfuse Inc.](#)

RFQ



**0233008.MXF11P**  
FUSE GLASS 8A 125VAC 5X20MM  
[Littelfuse Inc.](#)

RFQ



**0233007.MXEP**  
FUSE GLASS 7A 125VAC 5X20MM  
[Littelfuse Inc.](#)

RFQ



**0233006.MXE**  
FUSE GLASS 6A 125VAC 5X20MM  
[Littelfuse Inc.](#)

RFQ



**0233006.MXEP**  
FUSE GLASS 6A 125VAC 5X20MM  
[Littelfuse Inc.](#)

RFQ



**0233006.MXW**  
FUSE GLASS 6A 125VAC 5X20MM  
[Littelfuse Inc.](#)

RFQ

**Guess You May Looking For**



**0283050.T**  
FUSE AUTO 50A 32VDC AUTO LINK  
[Littelfuse Inc.](#)

RFQ



**19300501009**  
FUSE GLASS 50MA 250VAC 5X20MM  
[Littelfuse Inc.](#)

RFQ



**BK/S500-V-3.15R**  
FUSE GLASS 3.15A 250VAC 5X20MM  
[Eaton](#)

RFQ



**30300800131**  
FUSE BOARD MNT 80MA 125VAC 63VDC  
[Littelfuse Inc.](#)

RFQ



**SL1024B500RG**  
GDT 500V 20KA T/H FAIL SHORT  
[Littelfuse Inc.](#)

RFQ



**2036-42-B3FLF**  
GDT 420V 20% 10KA T/H FAIL SHORT  
[Bourns Inc.](#)

RFQ



**RUEF400-1**  
POLYSWITCH PTC RESET 4A  
[Littelfuse Inc.](#)

RFQ



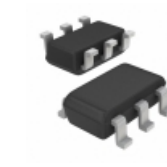
**RLD60P090XF**  
FUSE RESETTABLE 900MA 60V RADIAL  
[Littelfuse Inc.](#)

RFQ



**PFLT.070**  
FUSE PTC 0.7A 24V RESET AXIAL  
[Schurter Inc.](#)

RFQ



**DT1446-04S0-7**  
TVS DIODE 5VWM 6VC SOT26  
[Diodes Incorporated](#)

RFQ

